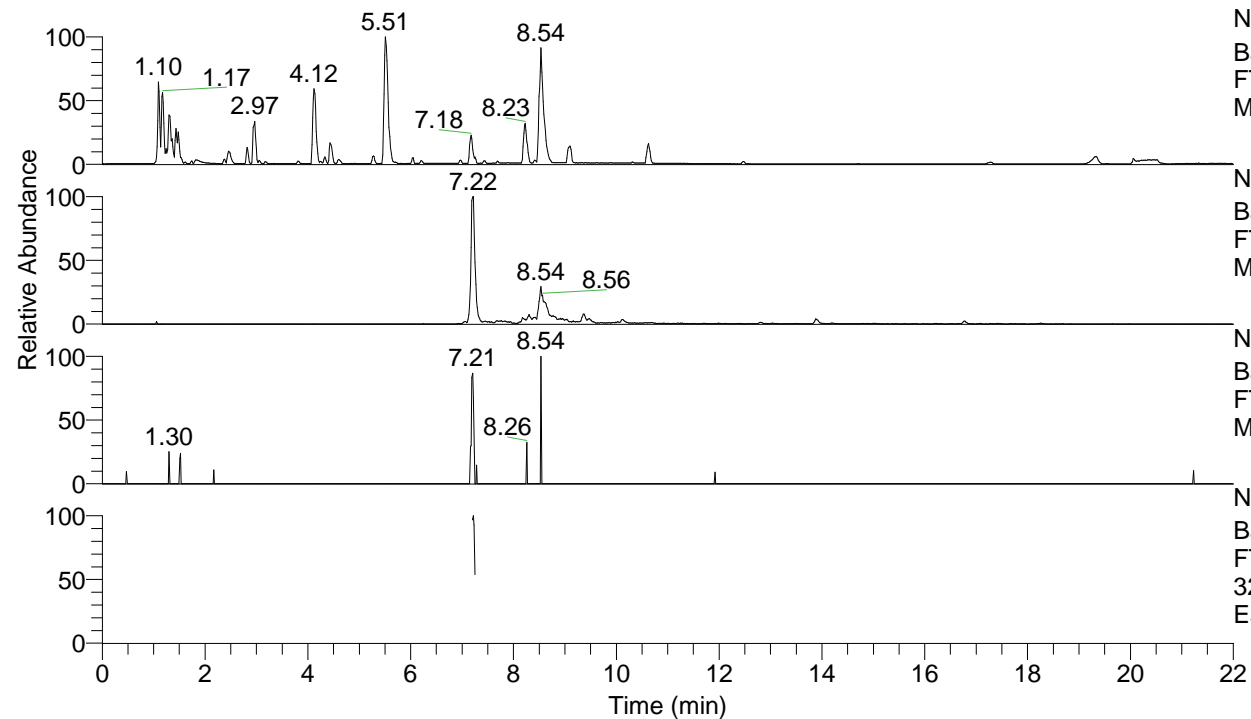


RT: 0.00 - 22.00



NL: 8.71E7
 Base Peak m/z= 100.00000-1500.00000 F:
 FTMS + p ESI Full ms [100.00-1500.00]
 MS Eagrestis

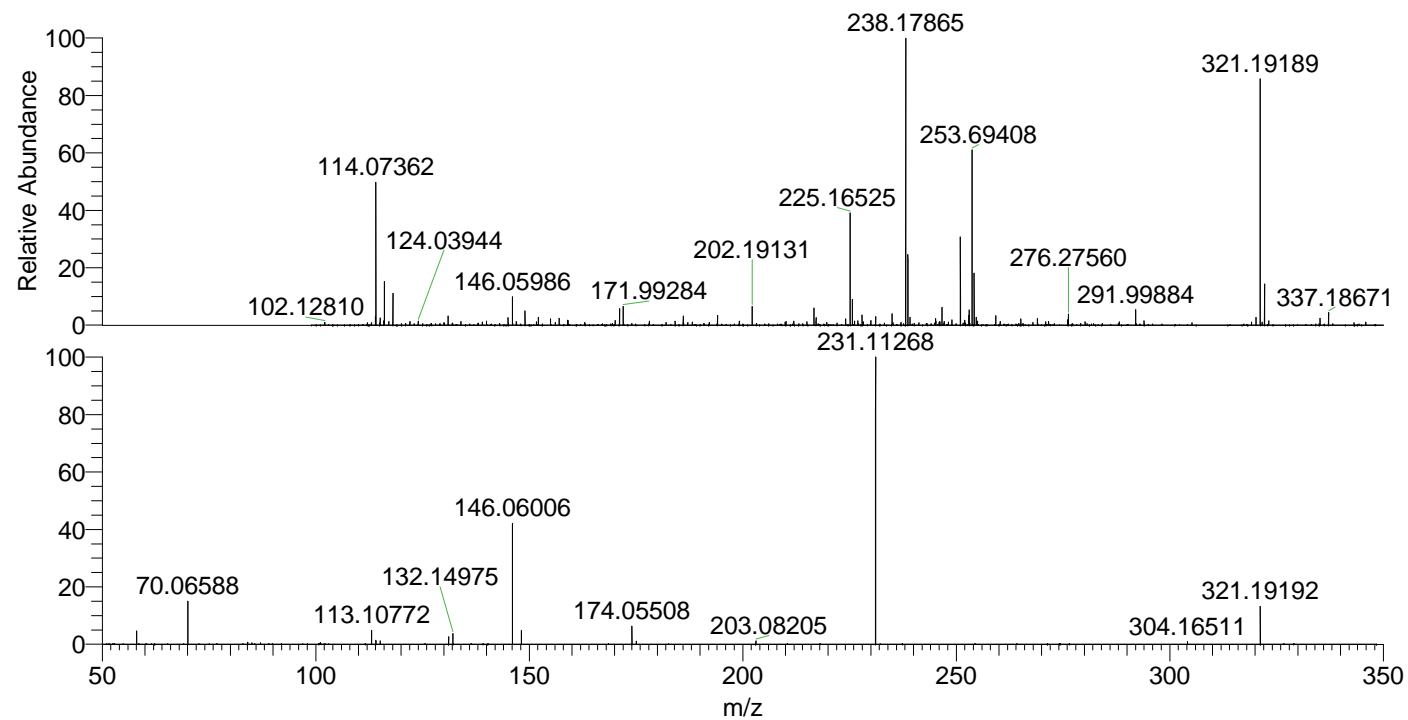
NL: 1.56E6
 Base Peak m/z= 321.18946-321.19588 F:
 FTMS + p ESI Full ms [100.00-1500.00]
 MS Eagrestis

NL: 8.28E3
 Base Peak m/z= 161.09864-161.10186 F:
 FTMS + p ESI Full ms [100.00-1500.00]
 MS Eagrestis

NL: 4.40E5
 Base Peak m/z= 50.00000-1500.00000 F:
 FTMS + p ESI d Full ms2
 321.19@hcd35.00 [50.00-345.00] MS
 Eagrestis

Eagrestis#2892-2910 RT: 7.20-7.25 AV:
 F: FTMS + p ESI d Full ms2 321.19 ...
 m/z= 50.00000-1000.00000

m/z	Intensity	Relative
58.06600	17613.0	4.81
70.06588	55776.1	15.24
84.08155	2689.4	0.73
87.09206	1856.4	0.51
101.10777	2252.2	0.62
113.10772	17702.5	4.84
114.09177	5098.2	1.39
115.12335	4270.2	1.17
131.11805	9795.0	2.68
132.14975	13650.8	3.73
146.06006	156016.5	42.64
148.14459	18194.1	4.97
174.05508	23185.3	6.34
175.08683	3915.1	1.07
203.08205	4539.3	1.24
231.11268	365924.3	100.00
304.16511	3522.0	0.96
321.19192	48193.4	13.17



NL: 1.74E6
 Eagrestis#2899 RT: 7.22
 AV: 1 T: FTMS + p ESI
 Full ms [100.00-1500.00]

NL: 3.66E5
 Eagrestis#2841-2971 RT:
 7.20-7.25 AV: 4 F: FTMS
 + p ESI d Full ms2
 321.19@hcd35.00
 [50.00-345.00]