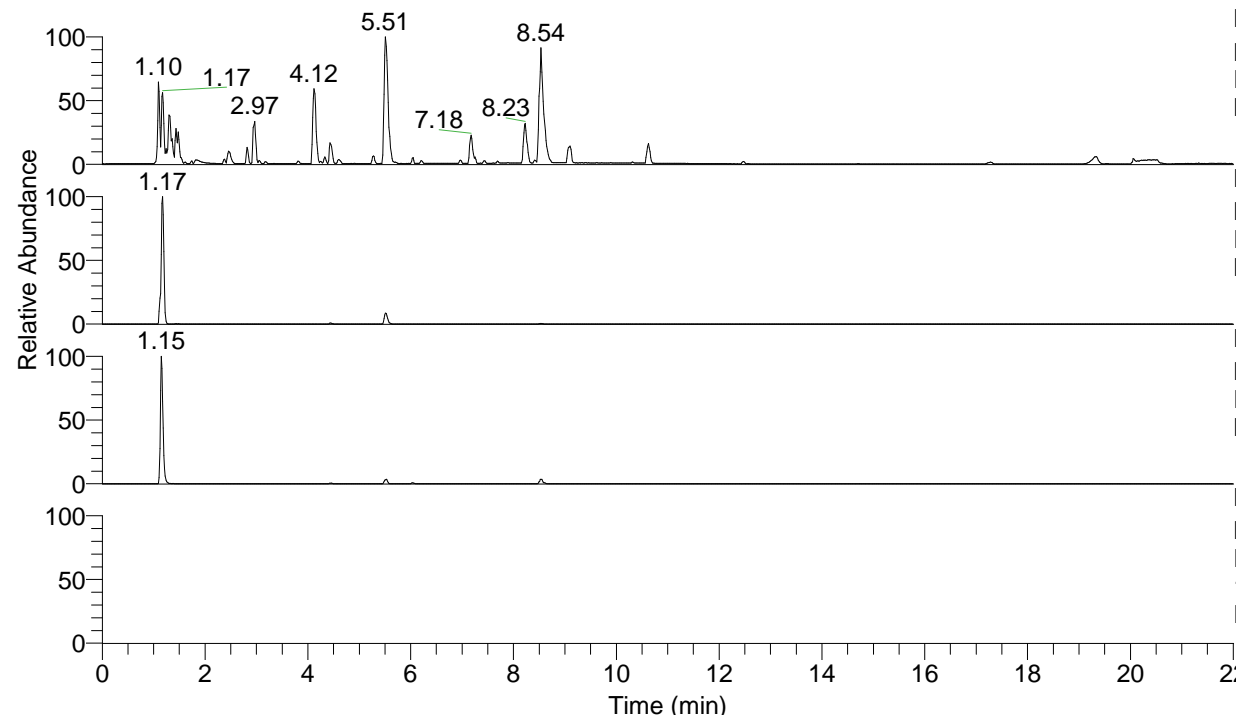


RT: 0.00 - 22.00



NL: 8.71E7
 Base Peak m/z= 100.00000-1500.00000 F:
 FTMS + p ESI Full ms [100.00-1500.00]
 MS Eagrestis

NL: 4.92E7
 Base Peak m/z= 318.29495-318.30131 F:
 FTMS + p ESI Full ms [100.00-1500.00]
 MS Eagrestis

NL: 7.26E6
 Base Peak m/z= 159.65138-159.65458 F:
 FTMS + p ESI Full ms [100.00-1500.00]
 MS Eagrestis

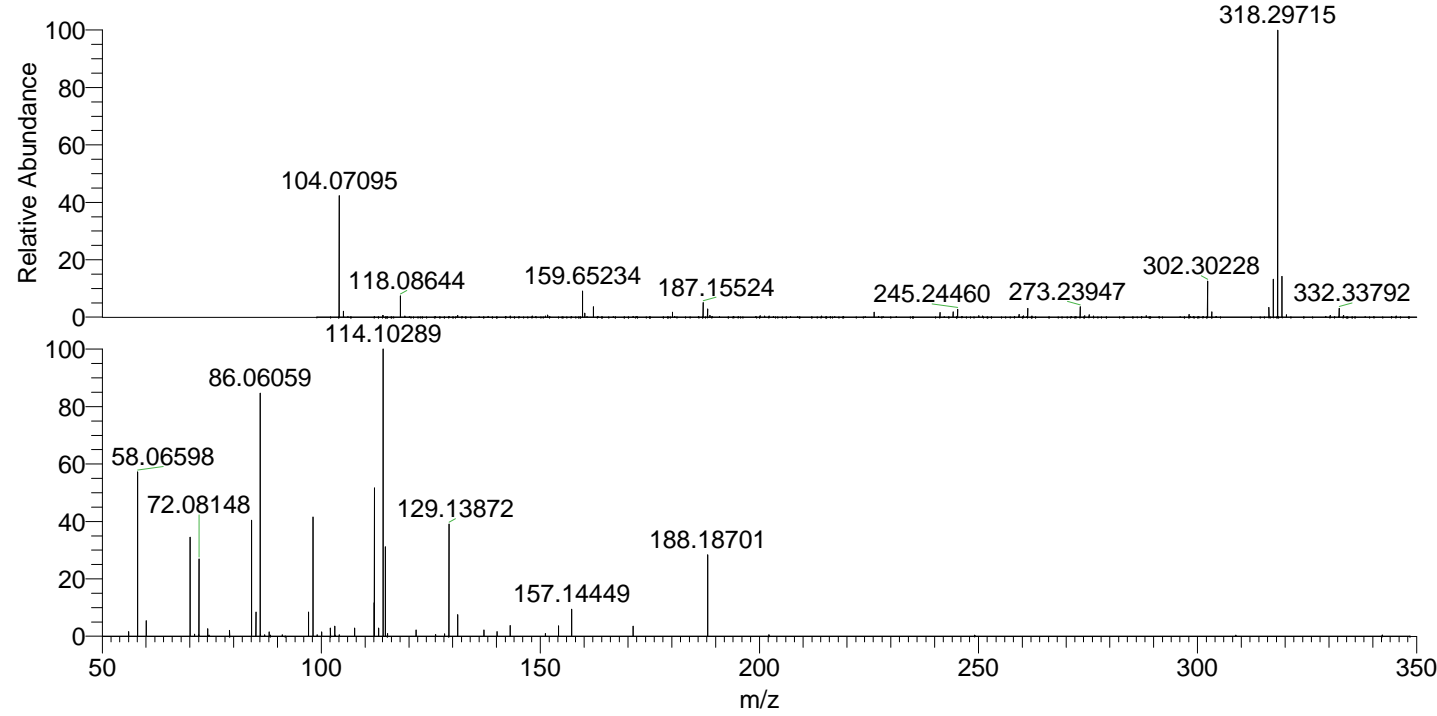
NL: 8.75E5
 Base Peak m/z= 50.00000-1500.00000 F:
 FTMS + p ESI d Full ms2
 159.65@hcd35.00 [50.00-345.00] MS
 Eagrestis

Eagrestis#461 RT: 1.14

F: FTMS + p ESI d Full ms2 159.65 ...

m/z= 50.00000-1000.00000

m/z	Intensity	Relative
56.05021	14474.7	1.65
58.06598	504118.8	57.59
60.04522	48310.9	5.52
60.05644	47117.8	5.38
70.06585	311697.8	35.61
71.06119	6161.2	0.70
72.06901	25978.2	2.97
72.08148	234953.0	26.84
74.06071	24295.3	2.78
79.07662	19046.4	2.18
84.08136	365327.2	41.73
85.07663	75661.8	8.64
85.08920	18433.9	2.11
86.06059	737914.7	84.30
86.08440	71047.4	8.12
86.09689	5328.0	0.61
87.09216	4384.4	0.50
88.07602	13320.0	1.52
97.07661	75226.1	8.59
98.09689	362114.3	41.37
99.09232	4405.5	0.50
100.08730	13261.1	1.51
102.09186	25692.4	2.94
103.08701	30541.3	3.49
107.60532	25285.1	2.89
112.08730	101639.3	11.61
112.11239	474362.8	54.19
113.10757	25023.4	2.86
113.11536	5867.5	0.67
114.09168	537447.7	61.40
114.10289	875360.7	100.00
114.61304	281330.2	32.14
114.62132	4392.6	0.50
115.10648	8274.9	0.95
121.61527	18591.6	2.12
126.10265	5293.7	0.60
128.11844	6958.0	0.79
129.13872	346506.2	39.58
131.11812	38407.0	4.39
131.12936	66534.1	7.60
137.12376	18450.6	2.11
140.11874	15011.1	1.71
143.11797	13653.0	1.56
143.12927	35082.6	4.01
151.13992	8434.2	0.96
154.13374	31837.8	3.64
157.14449	86942.3	9.93
171.16031	31206.1	3.56
188.18701	247586.9	28.28



NL: 4.90E7
 Eagrestis#475 RT:
 1.17 AV: 1 T: FTMS +
 p ESI Full ms
 [100.00-1500.00]

NL: 8.66E5
 Eagrestis#288 RT:
 1.14 AV: 1 F: FTMS +
 p ESI d Full ms2
 159.65@hcd35.00
 [50.00-345.00]