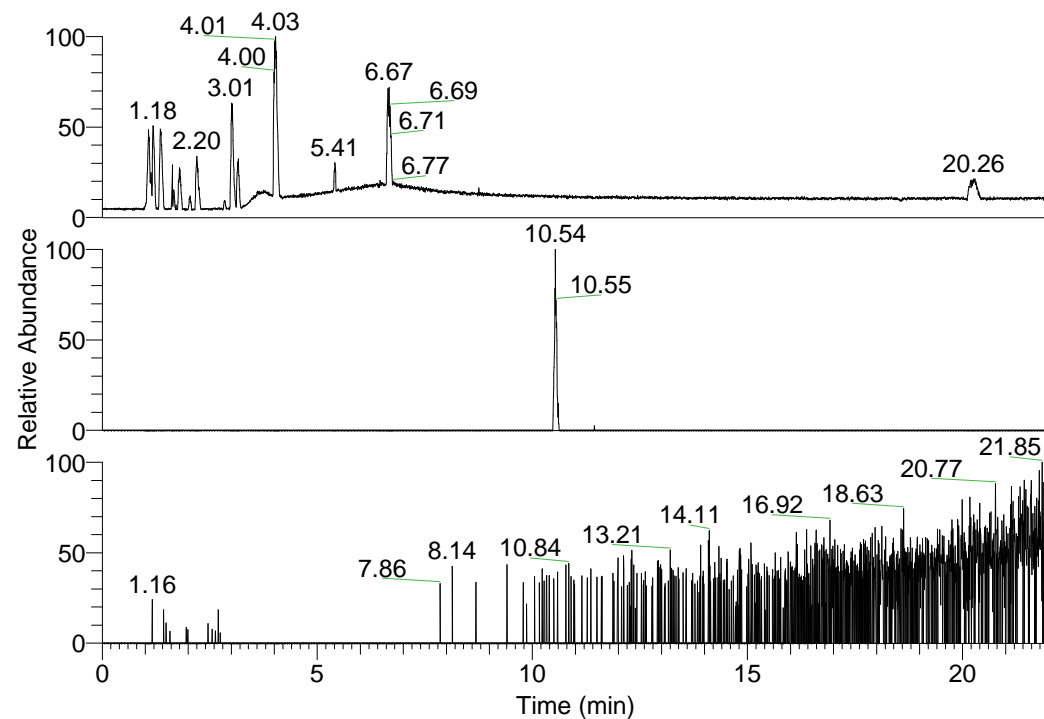


RT: 0.00 - 22.01



NL: 1.58E8  
 Base Peak m/z=  
 100.00000-1500.00000 F:  
 FTMS + p ESI Full ms  
 [100.00-1500.00] MS  
 Egrestis\_HDX

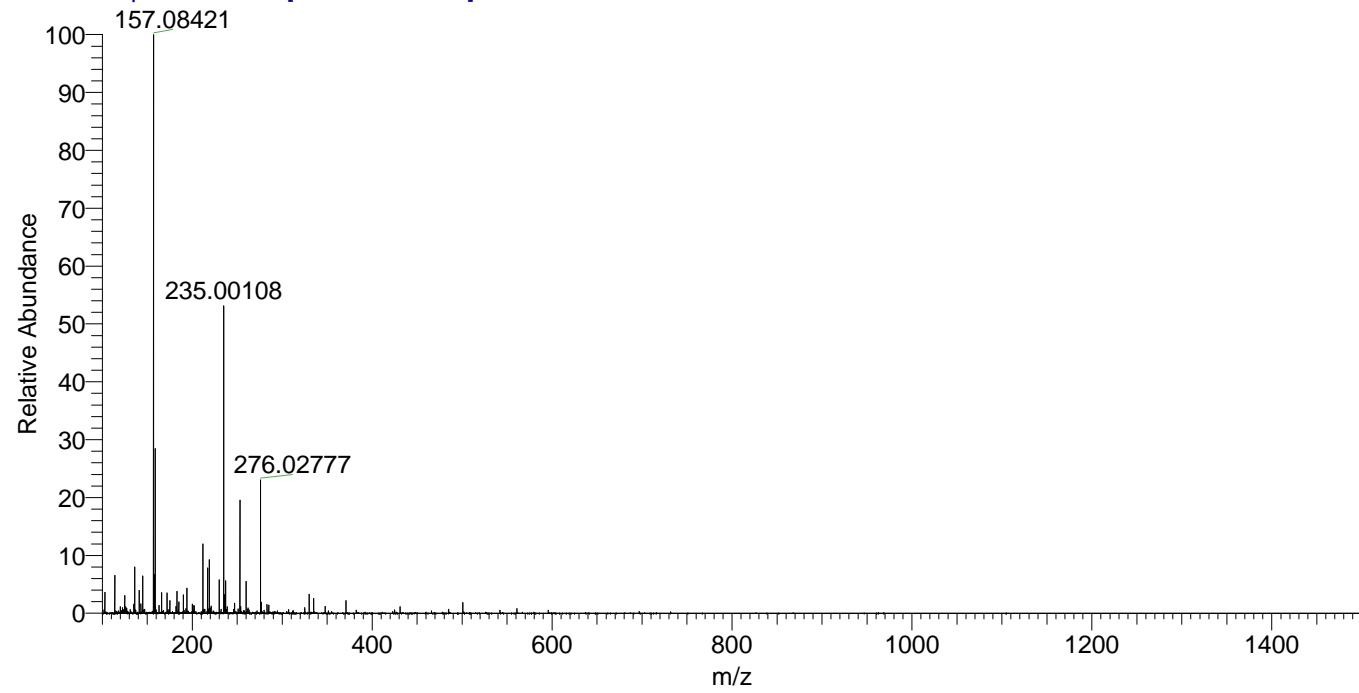
NL: 1.23E5  
 Base Peak m/z=  
 312.22601-312.22913 F:  
 FTMS + p ESI Full ms  
 [100.00-1500.00] MS  
 Egrestis\_HDX

NL: 2.86E4  
 Base Peak m/z=  
 157.12004-157.12162 F:  
 FTMS + p ESI Full ms  
 [100.00-1500.00] MS  
 Egrestis\_HDX

Egrestis\_HDX#1706 RT: 10.54  
 T: FTMS + p ESI Full ms [100.00-1500.00]  
 m/z= 312.00000-313.00000

m/z	Intensity	Relative	Delta (ppm)	Composition
312.22821	78105.5	100.00	-1.13	C <sub>15</sub> H <sub>16</sub> <sup>2</sup> H <sub>7</sub> O <sub>2</sub> N <sub>5</sub>
			3.83	C <sub>15</sub> H <sub>14</sub> <sup>2</sup> H <sub>8</sub> O <sub>2</sub> N <sub>5</sub>

Egrestis\_HDX #1706 RT: 10.54 AV: 1 NL: 1.61E7  
 T: FTMS + p ESI Full ms [100.00-1500.00]



Egrestis\_HDX #1706 RT: 10.54 AV: 1 NL: 1.05E5  
 T: FTMS + p ESI Full ms [100.00-1500.00]

