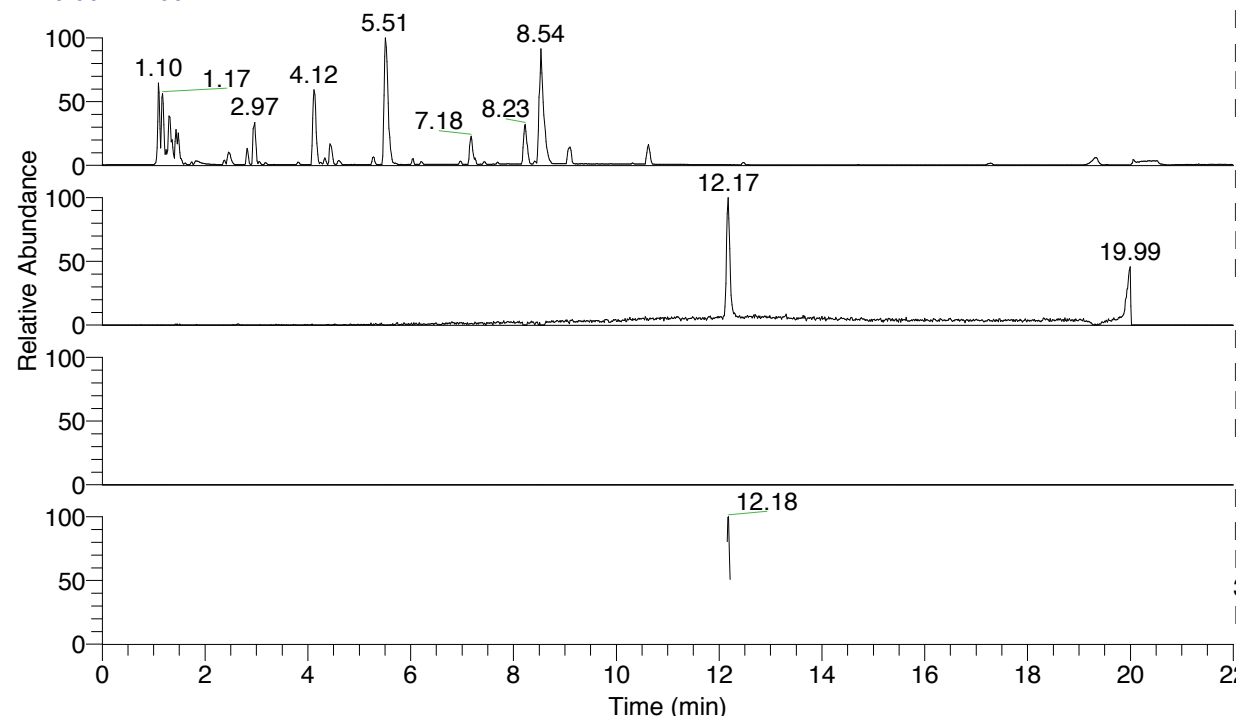


RT: 0.00 - 22.00



NL: 8.71E7  
 Base Peak m/z= 100.00000-1500.00000 F:  
 FTMS + p ESI Full ms [100.00-1500.00]  
 MS Eagrestis

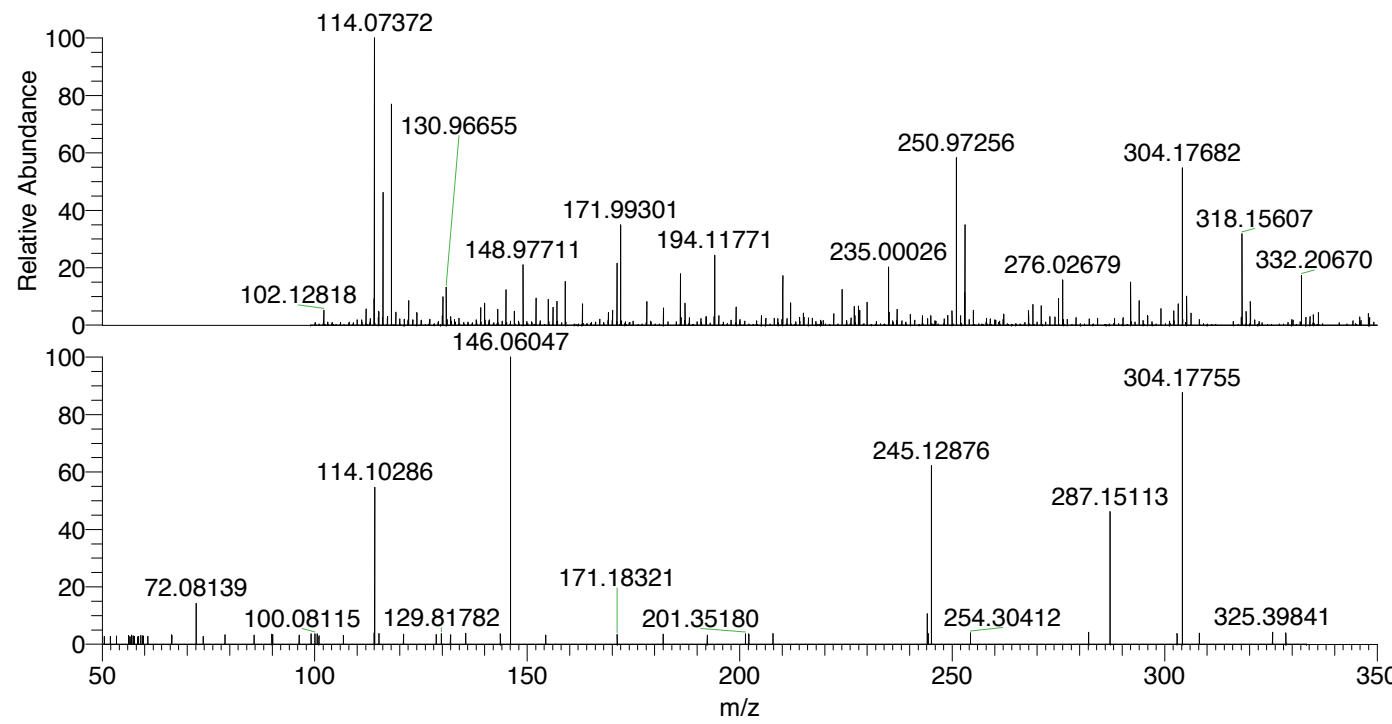
NL: 2.36E5  
 Base Peak m/z= 304.17431-304.18039 F:  
 FTMS + p ESI Full ms [100.00-1500.00]  
 MS Eagrestis

NL: 0  
 Base Peak m/z= 152.59106-152.59412 F:  
 FTMS + p ESI Full ms [100.00-1500.00]  
 MS Eagrestis

NL: 2.60E4  
 Base Peak m/z= 50.00000-1500.00000 F:  
 FTMS + p ESI d Full ms2  
 304.18@hcd35.00 [50.00-330.00] MS  
 Eagrestis

Eagrestis#4871-4895 RT: 12.15-12.21  
 F: FTMS + p ESI d Full ms2 304.18 ...  
 m/z= 50.00000-1000.00000

| m/z       | Intensity | Relative |
|-----------|-----------|----------|
| 51.91686  | 497.2     | 2.76     |
| 53.37457  | 532.7     | 2.95     |
| 56.20647  | 551.8     | 3.06     |
| 56.91919  | 573.9     | 3.18     |
| 57.24256  | 547.8     | 3.04     |
| 57.53593  | 497.6     | 2.76     |
| 58.46919  | 498.7     | 2.77     |
| 59.08372  | 558.6     | 3.10     |
| 59.50629  | 541.1     | 3.00     |
| 59.70403  | 506.2     | 2.81     |
| 59.70610  | 521.6     | 2.89     |
| 60.71660  | 498.5     | 2.76     |
| 66.28234  | 614.5     | 3.41     |
| 66.34748  | 554.8     | 3.08     |
| 72.08139  | 2646.1    | 14.67    |
| 73.74280  | 500.5     | 2.77     |
| 78.89397  | 603.0     | 3.34     |
| 85.71029  | 594.0     | 3.29     |
| 89.91768  | 627.5     | 3.48     |
| 90.07782  | 621.7     | 3.45     |
| 96.32784  | 576.3     | 3.19     |
| 99.12072  | 649.9     | 3.60     |
| 100.08115 | 674.5     | 3.74     |
| 100.56288 | 653.5     | 3.62     |
| 100.99268 | 536.4     | 2.97     |
| 106.73978 | 558.2     | 3.09     |
| 113.96764 | 710.5     | 3.94     |
| 114.10286 | 9929.6    | 55.05    |
| 115.08744 | 675.1     | 3.74     |
| 120.88394 | 642.9     | 3.56     |
| 128.61126 | 639.2     | 3.54     |
| 129.81782 | 690.6     | 3.83     |
| 131.95133 | 614.1     | 3.40     |
| 135.52700 | 704.2     | 3.90     |
| 143.69365 | 658.2     | 3.65     |
| 146.06047 | 18037.7   | 100.00   |
| 154.35249 | 578.8     | 3.21     |
| 171.18321 | 613.9     | 3.40     |
| 181.98438 | 625.6     | 3.47     |
| 182.00825 | 654.4     | 3.63     |
| 192.36242 | 585.1     | 3.24     |
| 201.35180 | 669.1     | 3.71     |
| 202.14497 | 661.7     | 3.67     |
| 207.84666 | 666.4     | 3.69     |
| 244.14469 | 1928.2    | 10.69    |
| 244.37838 | 690.6     | 3.83     |
| 245.12876 | 11260.8   | 62.43    |
| 254.30412 | 725.2     | 4.02     |
| 282.11121 | 765.1     | 4.24     |
| 287.15113 | 8619.7    | 47.79    |
| 302.92562 | 667.6     | 3.70     |
| 304.17755 | 16028.5   | 88.86    |
| 308.16025 | 706.6     | 3.92     |
| 325.39841 | 752.7     | 4.17     |
| 328.51339 | 724.3     | 4.02     |



NL: 4.04E5  
 Eagrestis#4879 RT: 12.17  
 AV: 1 T: FTMS + p ESI  
 Full ms [100.00-1500.00]

NL: 1.80E4  
 Eagrestis#4824-4933 RT:  
 12.15-12.21 AV: 5 F:  
 FTMS + p ESI d Full ms2  
 304.18@hcd35.00  
 [50.00-330.00]

Egrestis#4871-4895 RT: 12.15-12.21 AV: 5

F: FTMS + p ESI d Full ms2 304.18@hcd35.00 [50.00-330.00]

m/z= 50.00000-1000.00000

| m/z       | Intensity | Relative |
|-----------|-----------|----------|
| 50.50308  | 496.6     | 2.75     |
| 51.91686  | 497.2     | 2.76     |
| 53.37457  | 532.7     | 2.95     |
| 56.20647  | 551.8     | 3.06     |
| 56.52153  | 480.6     | 2.66     |
| 56.84137  | 424.4     | 2.35     |
| 56.91919  | 573.9     | 3.18     |
| 57.24256  | 547.8     | 3.04     |
| 57.51322  | 491.7     | 2.73     |
| 57.53593  | 497.6     | 2.76     |
| 58.29949  | 460.4     | 2.55     |
| 58.46919  | 498.7     | 2.77     |
| 58.56092  | 448.6     | 2.49     |
| 59.08372  | 558.6     | 3.10     |
| 59.50629  | 541.1     | 3.00     |
| 59.70403  | 506.2     | 2.81     |
| 59.70610  | 521.6     | 2.89     |
| 60.71660  | 498.5     | 2.76     |
| 66.28234  | 614.5     | 3.41     |
| 66.34748  | 554.8     | 3.08     |
| 72.08139  | 2646.1    | 14.67    |
| 73.74280  | 500.5     | 2.77     |
| 78.89397  | 603.0     | 3.34     |
| 85.71029  | 594.0     | 3.29     |
| 89.91768  | 627.5     | 3.48     |
| 90.07782  | 621.7     | 3.45     |
| 96.32784  | 576.3     | 3.19     |
| 99.12072  | 649.9     | 3.60     |
| 100.08115 | 674.5     | 3.74     |
| 100.56288 | 653.5     | 3.62     |
| 100.99268 | 536.4     | 2.97     |
| 106.73978 | 558.2     | 3.09     |
| 113.96764 | 710.5     | 3.94     |
| 114.10286 | 9929.6    | 55.05    |
| 115.08744 | 675.1     | 3.74     |
| 120.88394 | 642.9     | 3.56     |
| 128.61126 | 639.2     | 3.54     |
| 129.81782 | 690.6     | 3.83     |
| 131.95133 | 614.1     | 3.40     |

Eagrestis#4871-4895 RT: 12.15-12.21 AV: 5

F: FTMS + p ESI d Full ms2 304.18@hcd35.00 [50.00-330.00]

m/z= 50.00000-1000.00000

| m/z       | Intensity | Relative |
|-----------|-----------|----------|
| 135.52700 | 704.2     | 3.90     |
| 143.69365 | 658.2     | 3.65     |
| 146.06047 | 18037.7   | 100.00   |
| 154.35249 | 578.8     | 3.21     |
| 171.18321 | 613.9     | 3.40     |
| 181.98438 | 625.6     | 3.47     |
| 182.00825 | 654.4     | 3.63     |
| 192.36242 | 585.1     | 3.24     |
| 201.35180 | 669.1     | 3.71     |
| 202.14497 | 661.7     | 3.67     |
| 207.84666 | 666.4     | 3.69     |
| 244.14469 | 1928.2    | 10.69    |
| 244.37838 | 690.6     | 3.83     |
| 245.12876 | 11260.8   | 62.43    |
| 254.30412 | 725.2     | 4.02     |
| 282.11121 | 765.1     | 4.24     |
| 287.15113 | 8619.7    | 47.79    |
| 302.92562 | 667.6     | 3.70     |
| 304.17755 | 16028.5   | 88.86    |
| 308.16025 | 706.6     | 3.92     |
| 325.39841 | 752.7     | 4.17     |
| 328.51339 | 724.3     | 4.02     |