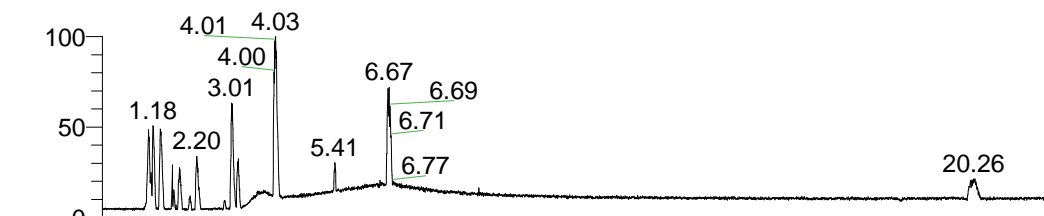


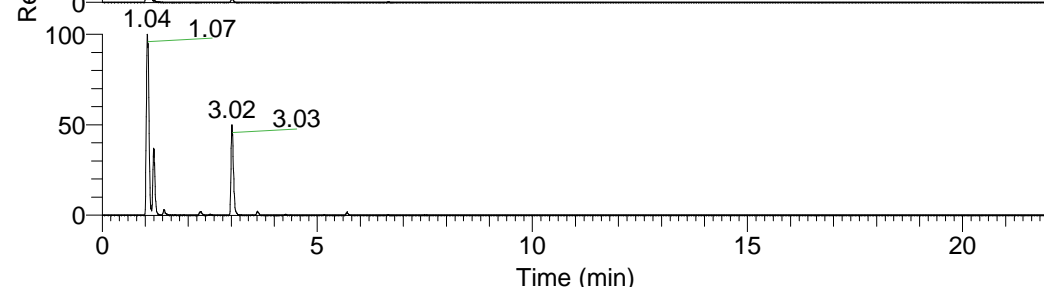
RT: 0.00 - 22.01



NL: 1.58E8
 Base Peak m/z=
 100.00000-1500.00000 F:
 FTMS + p ESI Full ms
 [100.00-1500.00] MS
 Egrestis_HDX



NL: 4.78E7
 Base Peak m/z=
 312.36443-312.36755 F:
 FTMS + p ESI Full ms
 [100.00-1500.00] MS
 Egrestis_HDX

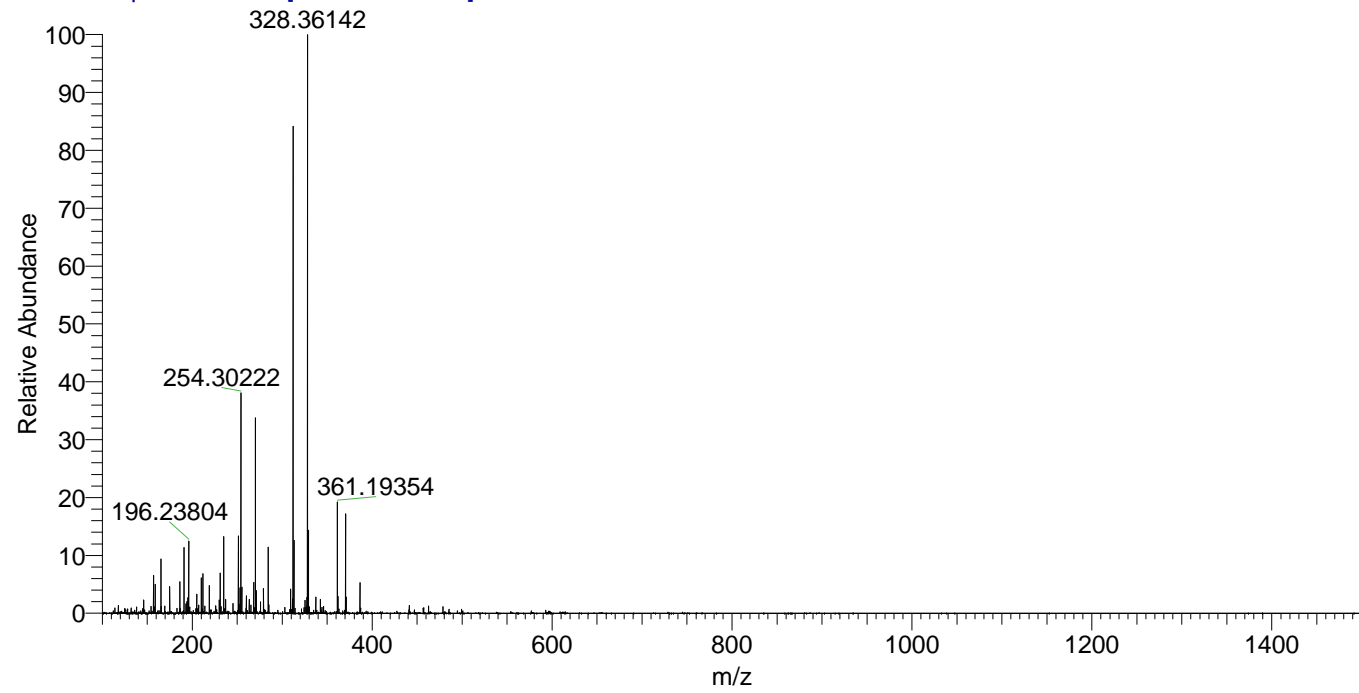


NL: 4.06E6
 Base Peak m/z=
 157.18926-157.19084 F:
 FTMS + p ESI Full ms
 [100.00-1500.00] MS
 Egrestis_HDX

Egrestis_HDX#159 RT: 1.06
 T: FTMS + p ESI Full ms [100.00-1500.00]
 m/z= 312.00000-313.00000

m/z	Intensity	Relative	Delta (ppm)	Composition
312.36652	47761716.0	100.00	-1.51	C ₁₄ H ₂₈ ² H ₉ N ₇
			3.45	C ₁₄ H ₂₆ ² H ₁₀ N ₇

Egrestis_HDX #159 RT: 1.06 AV: 1 NL: 5.46E7
 T: FTMS + p ESI Full ms [100.00-1500.00]



Egrestis_HDX #159 RT: 1.06 AV: 1 NL: 4.59E7
 T: FTMS + p ESI Full ms [100.00-1500.00]

