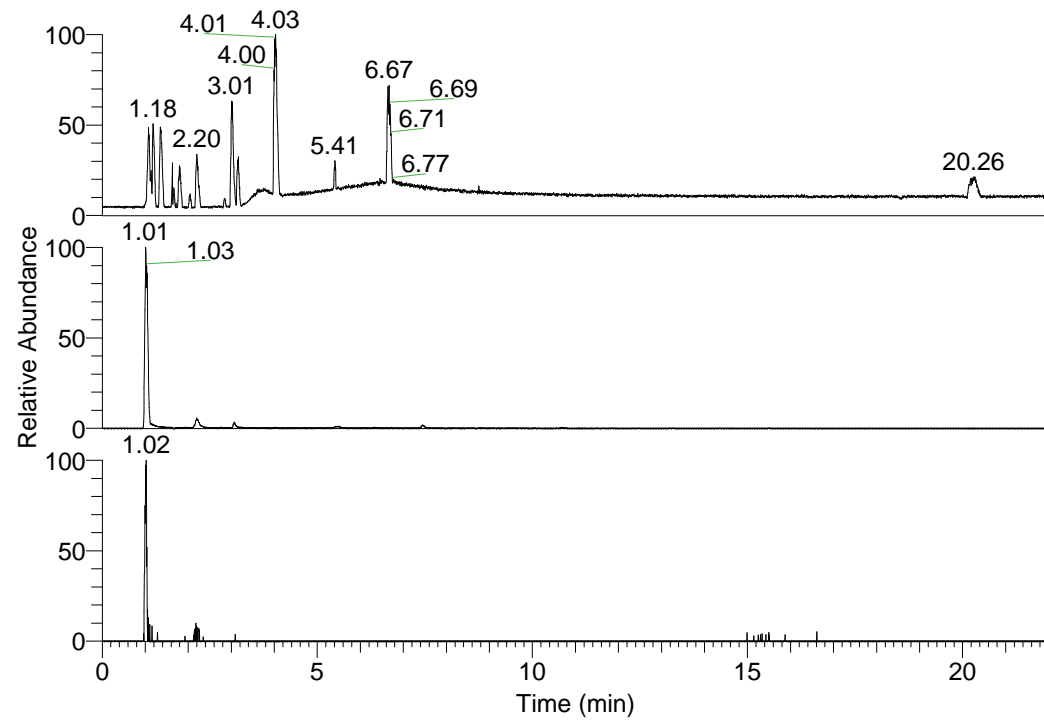


RT: 0.00 - 22.01



NL: 1.58E8
Base Peak m/z=
100.00000-1500.00000 F:
FTMS + p ESI Full ms
[100.00-1500.00] MS
Egrestis_HDX

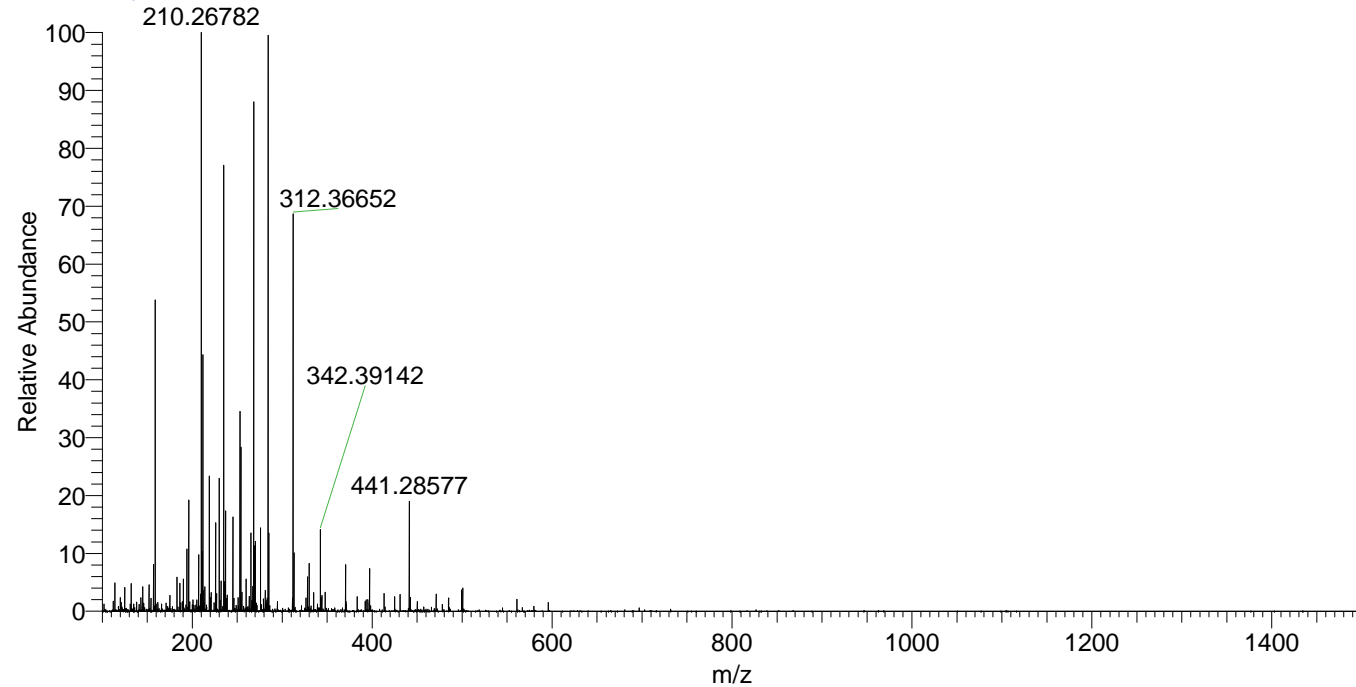
NL: 1.14E7
Base Peak m/z=
284.32513-284.32797 F:
FTMS + p ESI Full ms
[100.00-1500.00] MS
Egrestis_HDX

NL: 8.15E4
Base Peak m/z=
143.16961-143.17105 F:
FTMS + p ESI Full ms
[100.00-1500.00] MS
Egrestis_HDX

Egrestis_HDX#150 RT: 1.01
T: FTMS + p ESI Full ms [100.00-1500.00]
m/z= 284.00000-285.00000

m/z	Intensity	Relative	Delta (ppm)	Composition
284.32697	11436329.0	100.00	-2.05	C ₁₃ H ₂₈ ² H ₇ ON ₅
			3.39	C ₁₃ H ₂₆ ² H ₈ ON ₅

Egrestis_HDX #150 RT: 1.01 AV: 1 NL: 1.15E7
T: FTMS + p ESI Full ms [100.00-1500.00]



Egrestis_HDX #150 RT: 1.01 AV: 1 NL: 1.14E7
T: FTMS + p ESI Full ms [100.00-1500.00]

