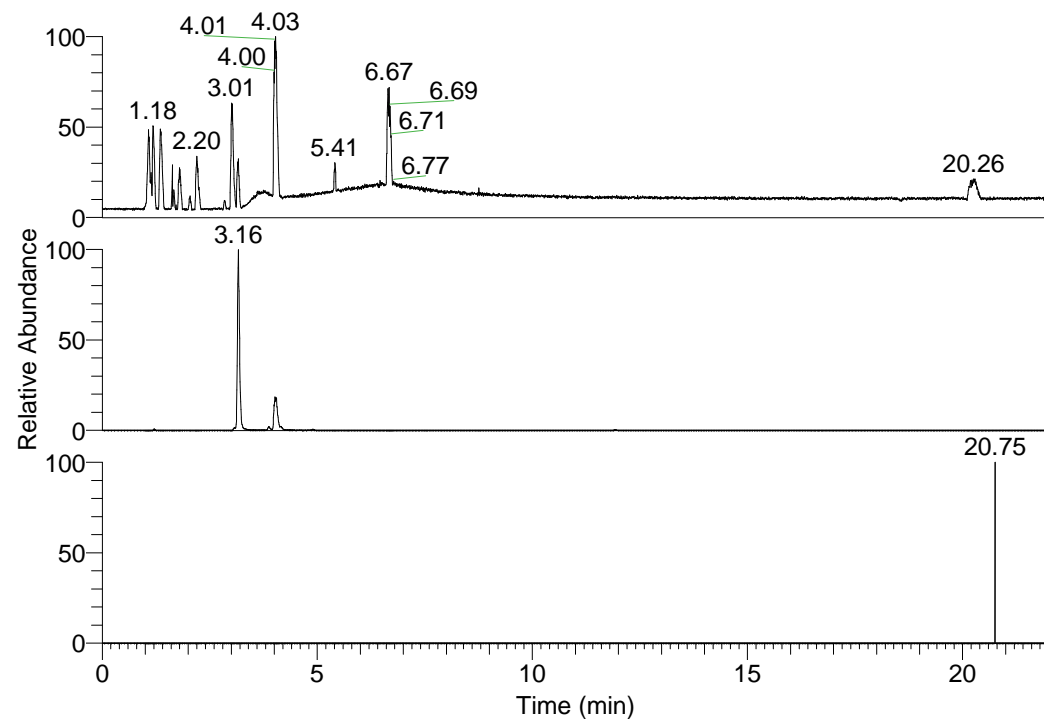


RT: 0.00 - 22.01



NL: 1.58E8  
 Base Peak m/z=  
 100.00000-1500.00000 F:  
 FTMS + p ESI Full ms  
 [100.00-1500.00] MS  
 Egrestis\_HDX

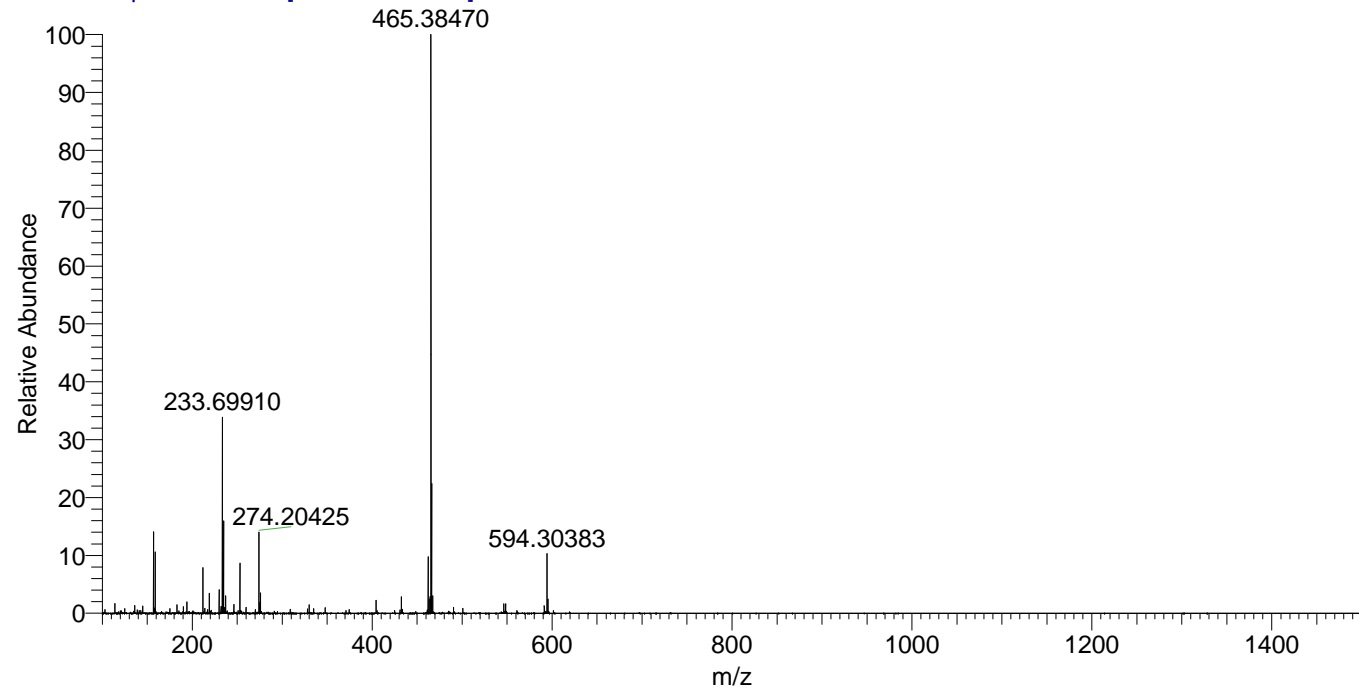
NL: 7.27E6  
 Base Peak m/z=  
 274.20241-274.20515 F:  
 FTMS + p ESI Full ms  
 [100.00-1500.00] MS  
 Egrestis\_HDX

NL: 3.63E3  
 Base Peak m/z=  
 238.10775-238.11013 F:  
 FTMS + p ESI Full ms  
 [100.00-1500.00] MS  
 Egrestis\_HDX

Egrestis\_HDX#498 RT: 3.16  
 T: FTMS + p ESI Full ms [100.00-1500.00]  
 m/z= 274.00000-275.00000

m/z	Intensity	Relative	Delta (ppm)	Composition
274.20425	6531301.5	100.00	-1.91	C <sub>13</sub> H <sub>18</sub> <sup>2</sup> H <sub>5</sub> O <sub>3</sub> N <sub>3</sub>
			3.74	C <sub>13</sub> H <sub>16</sub> <sup>2</sup> H <sub>6</sub> O <sub>3</sub> N <sub>3</sub>

Egrestis\_HDX #498 RT: 3.16 AV: 1 NL: 4.62E7  
 T: FTMS + p ESI Full ms [100.00-1500.00]



Egrestis\_HDX #498 RT: 3.16 AV: 1 NL: 6.47E6  
 T: FTMS + p ESI Full ms [100.00-1500.00]

