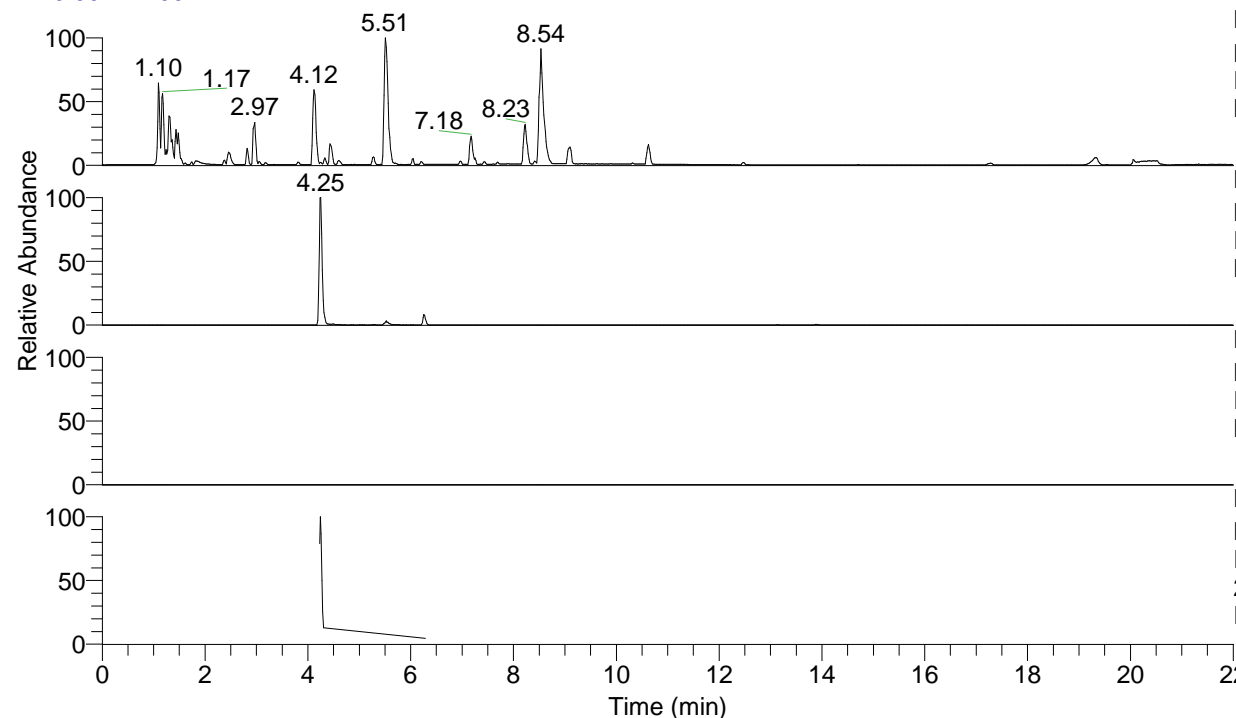


RT: 0.00 - 22.00



NL: 8.71E7
 Base Peak m/z= 100.00000-1500.00000 F:
 FTMS + p ESI Full ms [100.00-1500.00]
 MS Eagrestis

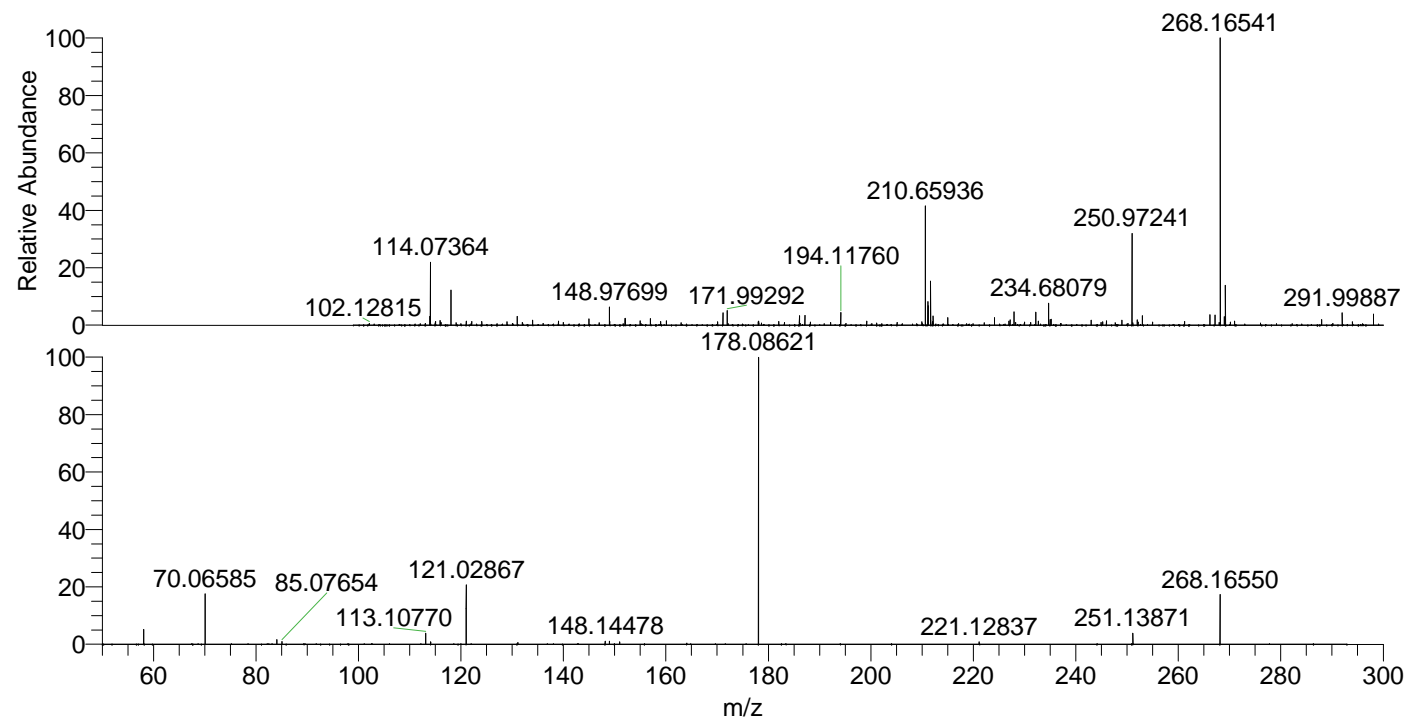
NL: 2.01E6
 Base Peak m/z= 268.16478-268.16746 F:
 FTMS + p ESI Full ms [100.00-1500.00]
 MS Eagrestis

NL: 0
 Base Peak m/z= 134.58630-134.58764 F:
 FTMS + p ESI Full ms [100.00-1500.00]
 MS Eagrestis

NL: 7.56E5
 Base Peak m/z= 50.00000-1500.00000 F:
 FTMS + p ESI d Full ms2
 268.17@hcd35.00 [50.00-290.00] MS
 Eagrestis

Eagrestis#1702-1731 RT: 4.23-4.30 AV:
 F: FTMS + p ESI d Full ms2 268.17 ...
 m/z= 50.00000-1000.00000

m/z	Intensity	Relative
58.06594	21348.2	5.15
70.06585	72380.2	17.46
84.08145	6828.4	1.65
85.07654	3879.2	0.94
113.10770	15447.0	3.73
114.09171	3518.2	0.85
121.02867	84808.0	20.46
131.11821	2718.2	0.66
148.14478	4540.8	1.10
148.97700	4271.7	1.03
150.97281	3361.9	0.81
178.08621	414449.3	100.00
221.12837	3376.9	0.81
251.13871	15864.2	3.83
268.16550	70272.7	16.96



NL: 1.99E6
 Eagrestis#1711 RT: 4.25
 AV: 1 T: FTMS + p ESI
 Full ms [100.00-1500.00]

NL: 4.04E5
 Eagrestis#1694-1754 RT:
 4.23-4.30 AV: 6 F: FTMS
 + p ESI d Full ms2
 268.17@hcd35.00
 [50.00-290.00]

