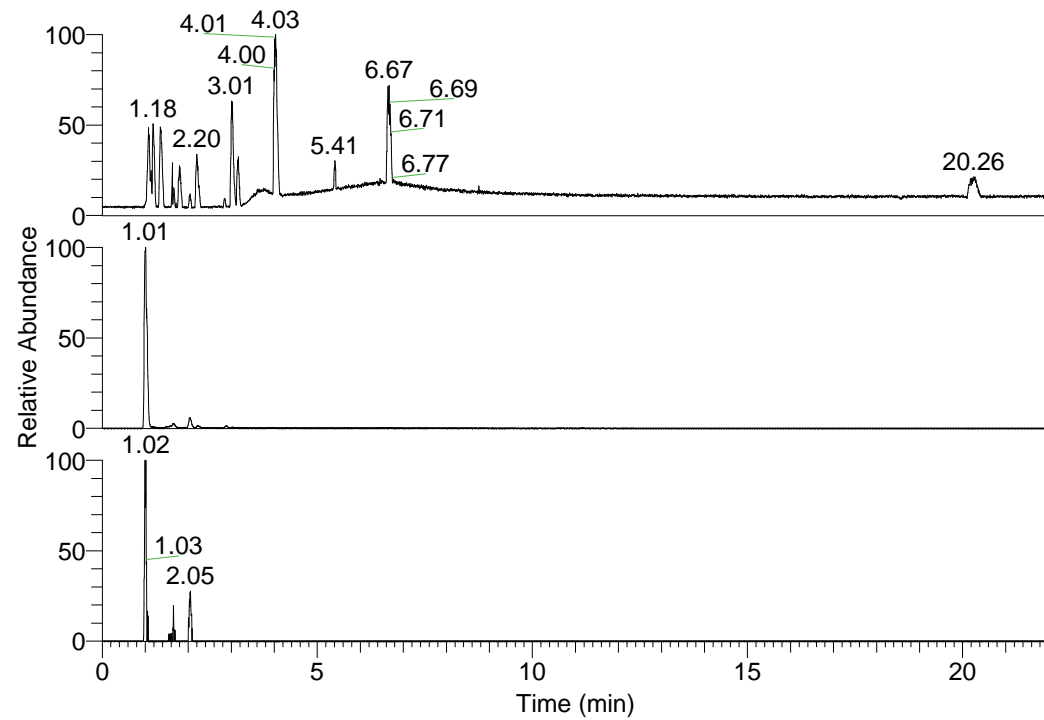


RT: 0.00 - 22.01



NL: 1.58E8
Base Peak m/z=
100.00000-1500.00000 F:
FTMS + p ESI Full ms
[100.00-1500.00] MS
Egrestis_HDX

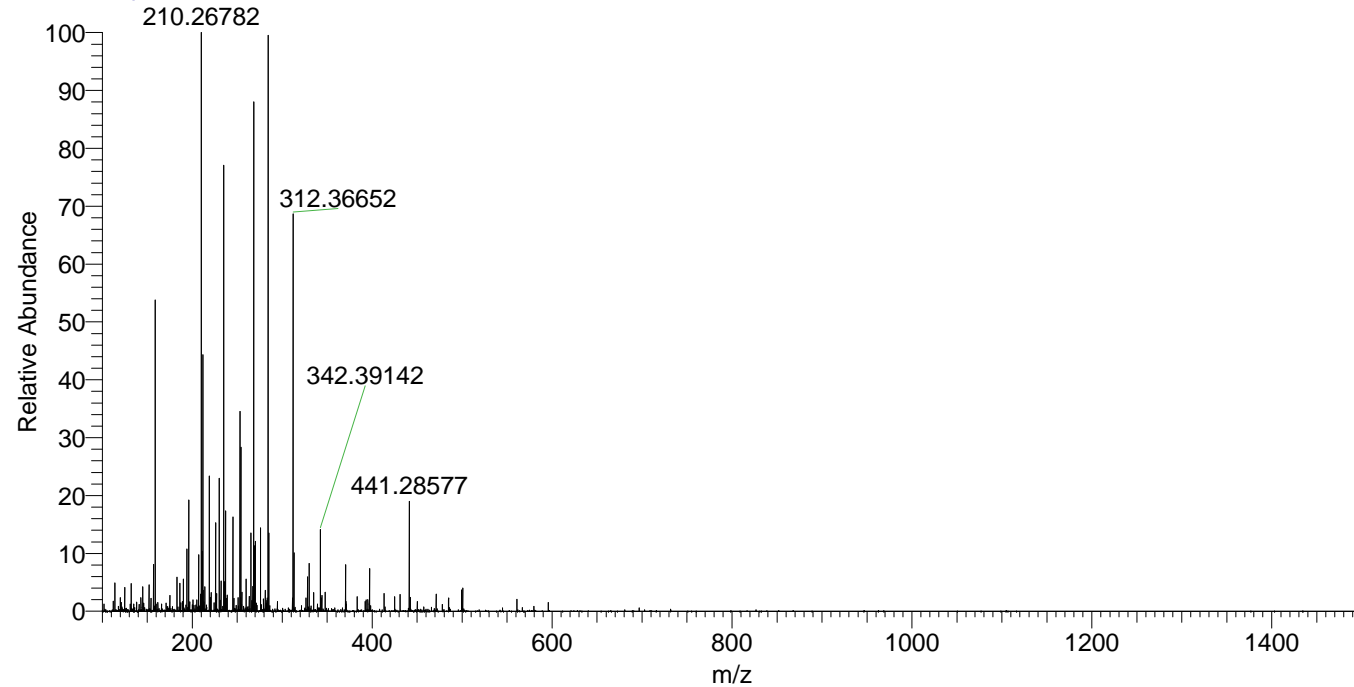
NL: 1.01E7
Base Peak m/z=
268.33030-268.33298 F:
FTMS + p ESI Full ms
[100.00-1500.00] MS
Egrestis_HDX

NL: 6.84E4
Base Peak m/z=
135.17219-135.17355 F:
FTMS + p ESI Full ms
[100.00-1500.00] MS
Egrestis_HDX

Egrestis_HDX#150 RT: 1.01
T: FTMS + p ESI Full ms [100.00-1500.00]
m/z= 268.00000-269.00000

m/z	Intensity	Relative	Delta (ppm)	Composition
268.33200	10138448.0	100.00	-2.36	C ₁₃ H ₂₈ ² H ₇ N ₅
			3.41	C ₁₃ H ₂₆ ² H ₈ N ₅

Egrestis_HDX #150 RT: 1.01 AV: 1 NL: 1.15E7
T: FTMS + p ESI Full ms [100.00-1500.00]



Egrestis_HDX #150 RT: 1.01 AV: 1 NL: 1.01E7
T: FTMS + p ESI Full ms [100.00-1500.00]

