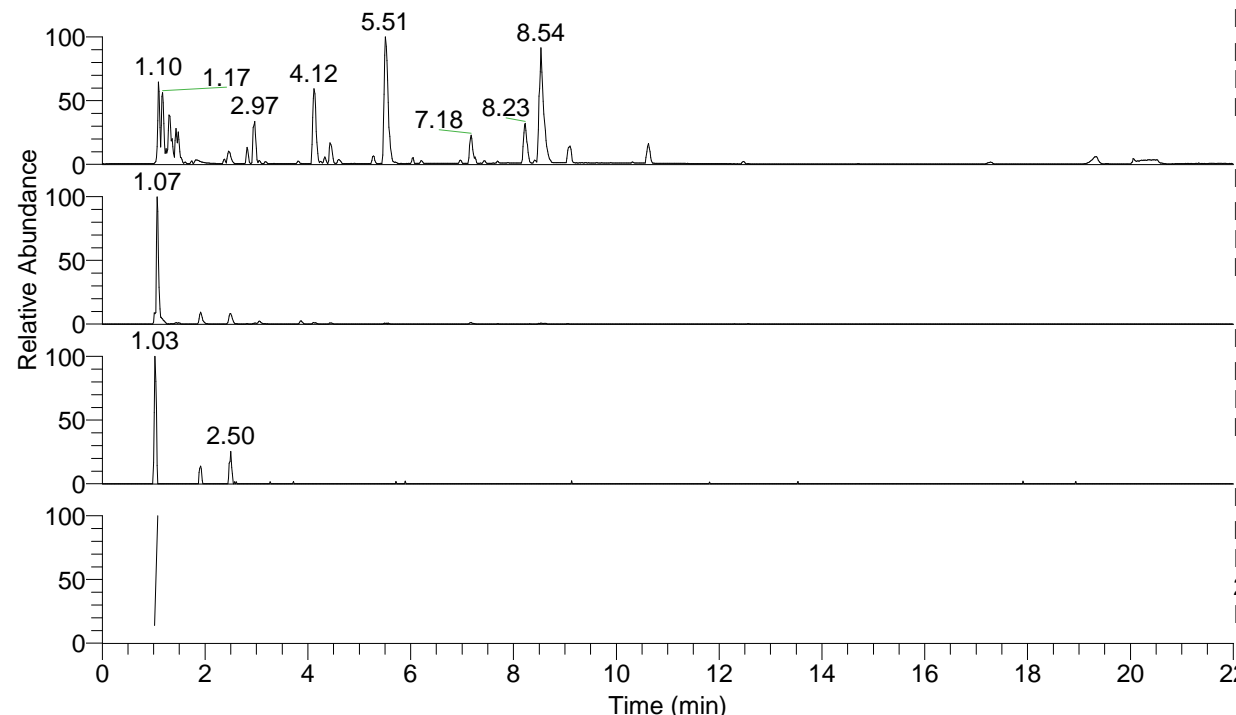


RT: 0.00 - 22.00



NL: 8.71E7
 Base Peak m/z= 100.00000-1500.00000 F:
 FTMS + p ESI Full ms [100.00-1500.00]
 MS Eagrestis

NL: 4.56E6
 Base Peak m/z= 260.28012-260.28272 F:
 FTMS + p ESI Full ms [100.00-1500.00]
 MS Eagrestis

NL: 5.52E4
 Base Peak m/z= 130.64397-130.64527 F:
 FTMS + p ESI Full ms [100.00-1500.00]
 MS Eagrestis

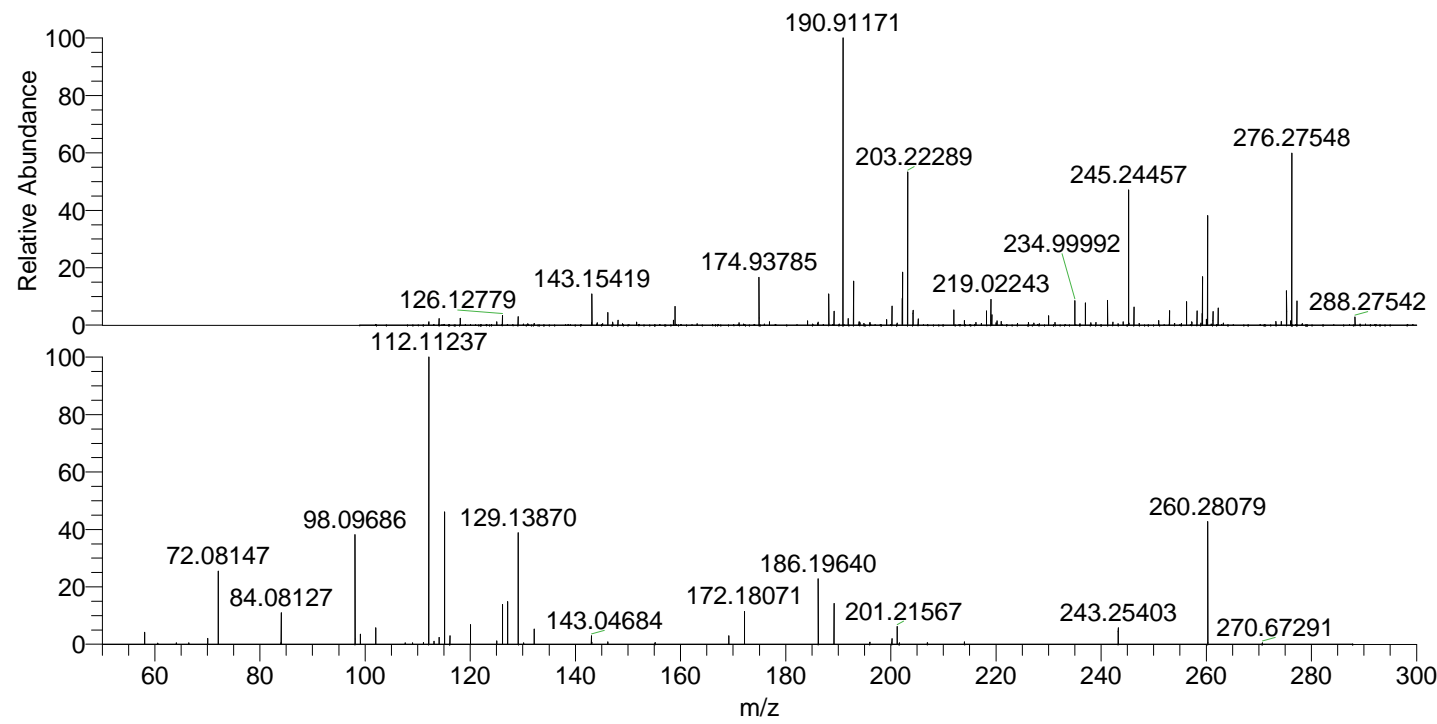
NL: 7.06E5
 Base Peak m/z= 50.00000-1500.00000 F:
 FTMS + p ESI d Full ms2
 260.28@hcd35.00 [50.00-285.00] MS
 Eagrestis

Eagrestis#432 RT: 1.08

F: FTMS + p ESI d Full ms2 260.28 ...

m/z= 50.00000-1000.00000

m/z	Intensity	Relative
58.06597	28897.7	4.09
70.06585	14504.4	2.05
72.08147	173111.2	24.51
84.01004	3640.7	0.52
84.08127	77200.2	10.93
98.09686	258724.6	36.64
99.09997	25241.8	3.57
102.02029	41071.5	5.82
107.62341	3693.2	0.52
111.10422	3921.1	0.56
112.11237	706177.4	100.00
113.11602	7013.7	0.99
114.10288	16080.0	2.28
115.12321	324278.1	45.92
116.12686	20685.3	2.93
120.03073	46685.0	6.61
125.03667	8149.8	1.15
126.12772	93608.9	13.26
127.12334	7475.3	1.06
127.13145	101626.1	14.39
129.13870	266228.2	37.70
130.14198	3785.2	0.54
132.14960	35796.3	5.07
143.04684	20321.7	2.88
143.12930	4876.7	0.69
146.16473	5943.2	0.84
155.15416	3840.2	0.54
169.17018	19838.7	2.81
172.18071	80931.7	11.46
186.19640	157654.5	22.33
189.20734	95930.7	13.58
196.00745	4685.5	0.66
200.21153	14459.4	2.05
201.21567	43873.4	6.21
214.01730	5787.2	0.82
243.25403	39094.1	5.54
260.28079	289023.2	40.93
270.67291	3678.3	0.52



NL: 1.16E7
 Eagrestis#427 RT:
 1.07 AV: 1 T: FTMS +
 p ESI Full ms
 [100.00-1500.00]

NL: 6.75E5
 Eagrestis#422 RT:
 1.08 AV: 1 F: FTMS +
 p ESI d Full ms2
 260.28@hcd35.00
 [50.00-285.00]