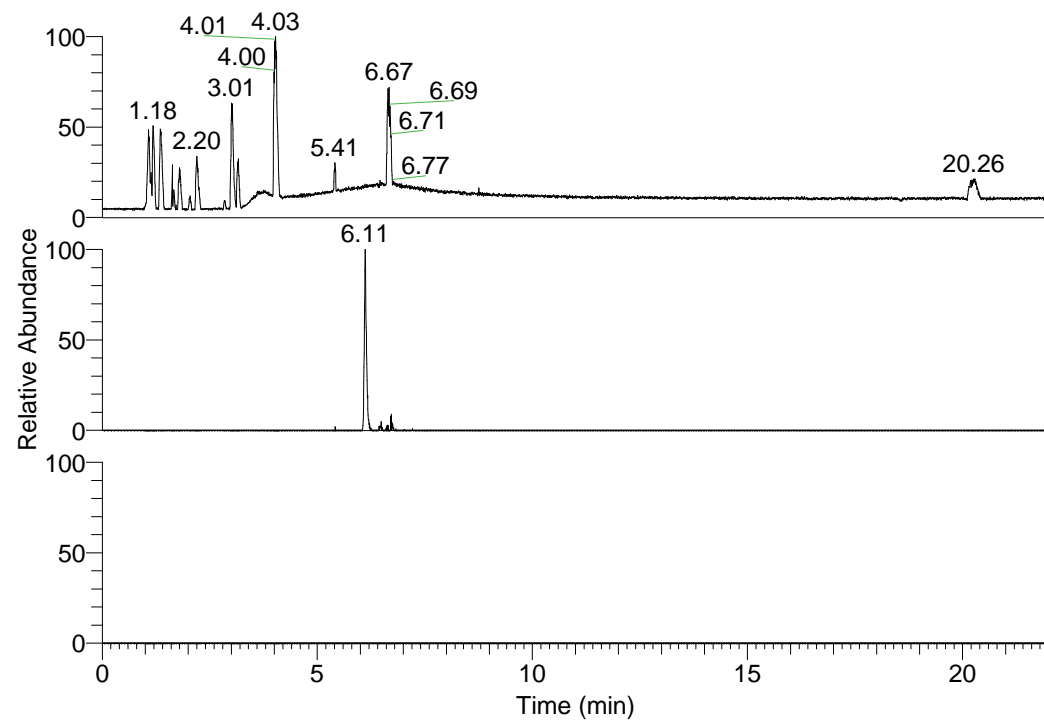


RT: 0.00 - 22.01



NL: 1.58E8  
Base Peak m/z=  
100.00000-1500.00000 F:  
FTMS + p ESI Full ms  
[100.00-1500.00] MS  
Egrestis\_HDX

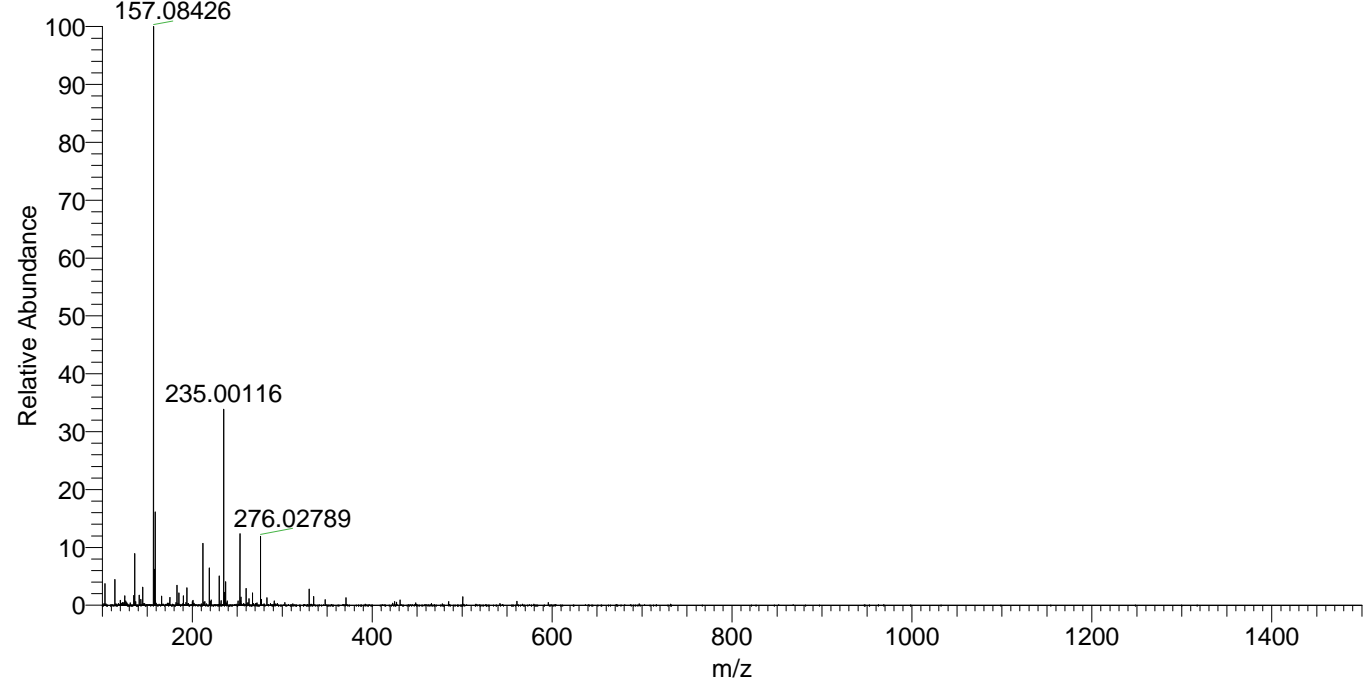
NL: 4.70E5  
Base Peak m/z=  
254.17629-254.17883 F:  
FTMS + p ESI Full ms  
[100.00-1500.00] MS  
Egrestis\_HDX

NL: 0  
Base Peak m/z=  
128.09519-128.09647 F:  
FTMS + p ESI Full ms  
[100.00-1500.00] MS  
Egrestis\_HDX

Egrestis\_HDX#980 RT: 6.11  
T: FTMS + p ESI Full ms [100.00-1500.00]  
m/z= 254.00000-255.00000

m/z	Intensity	Relative	Delta (ppm)	Composition
254.17805	416516.2	100.00	-2.00	C <sub>13</sub> H <sub>14</sub> <sup>2</sup> H <sub>5</sub> O <sub>2</sub> N <sub>3</sub>
			4.10	C <sub>13</sub> H <sub>12</sub> <sup>2</sup> H <sub>6</sub> O <sub>2</sub> N <sub>3</sub>

Egrestis\_HDX #980 RT: 6.11 AV: 1 NL: 2.90E7  
T: FTMS + p ESI Full ms [100.00-1500.00]



Egrestis\_HDX #980 RT: 6.11 AV: 1 NL: 3.58E6  
T: FTMS + p ESI Full ms [100.00-1500.00]

