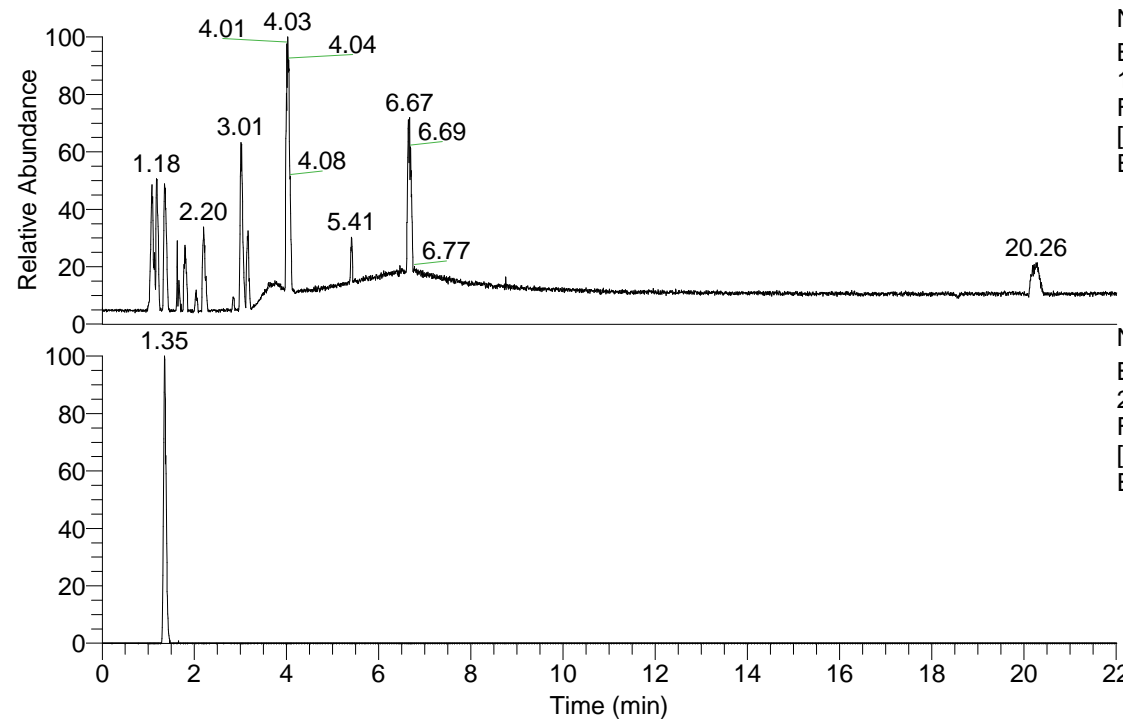


RT: 0.00 - 22.01



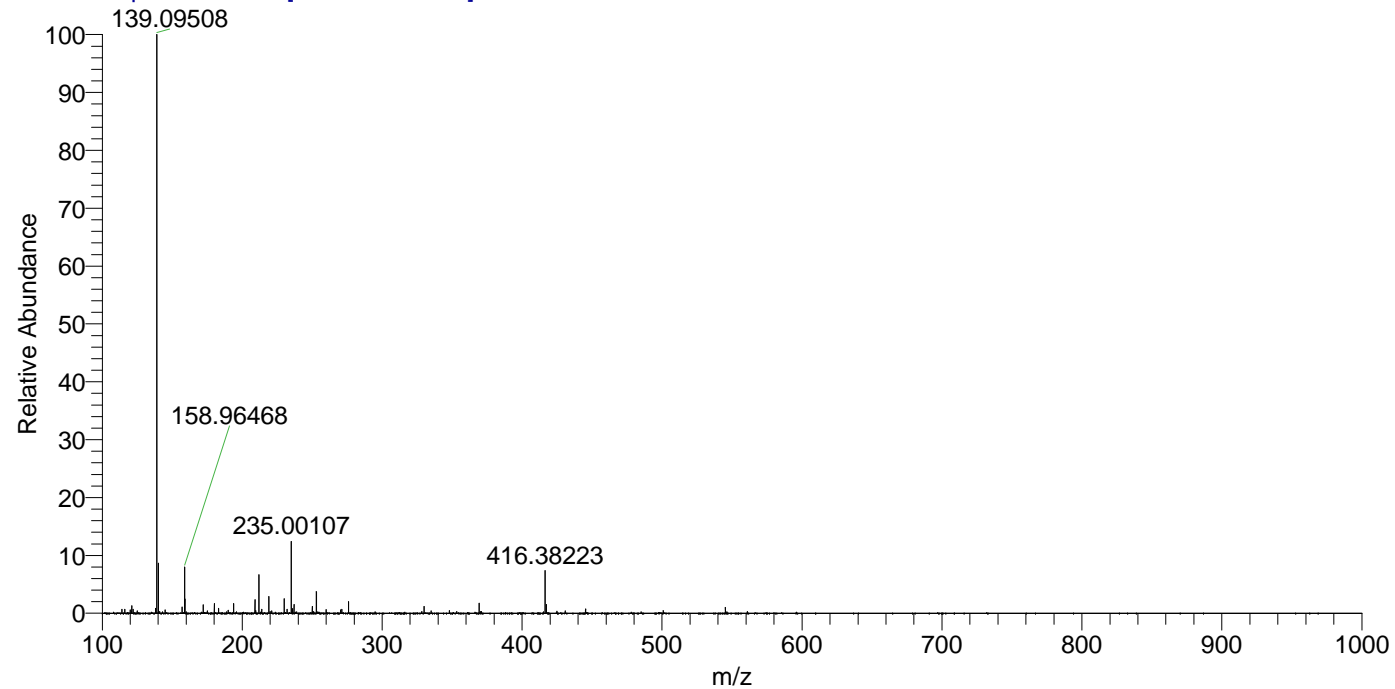
NL: 1.58E8
 Base Peak m/z= 100.00000-1500.00000
 F: FTMS + p ESI Full ms [100.00-1500.00] MS
 Eagrestis_HDX

Eagrestis_HDX#209 RT: 1.35
 T: FTMS + p ESI Full ms [100.00-1500.00]
 m/z= 250.00000-251.00000

m/z	Intensity	Relative	Delta (ppm)	Composition
250.13138	937162.8	100.00	-2.51	C ₉ H ₁₀ ² H ₅ O ₅ N ₃
			3.68	C ₉ H ₈ ² H ₆ O ₅ N ₃

NL: 9.37E5
 Base Peak m/z= 250.12975-250.13225 F:
 FTMS + p ESI Full ms [100.00-1500.00] MS
 Eagrestis_HDX

Eagrestis_HDX #209 RT: 1.35 AV: 1 NL: 7.62E7
 T: FTMS + p ESI Full ms [100.00-1500.00]



Eagrestis_HDX #209 RT: 1.35 AV: 1 NL: 2.85E6
 T: FTMS + p ESI Full ms [100.00-1500.00]

