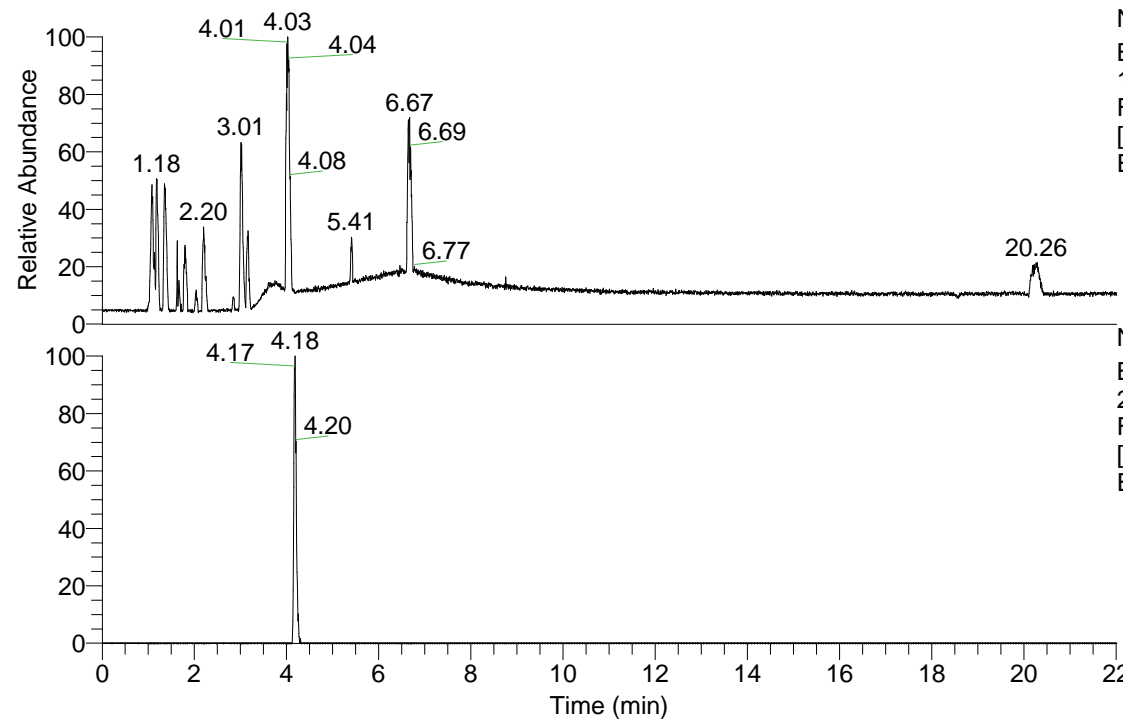


RT: 0.00 - 22.01

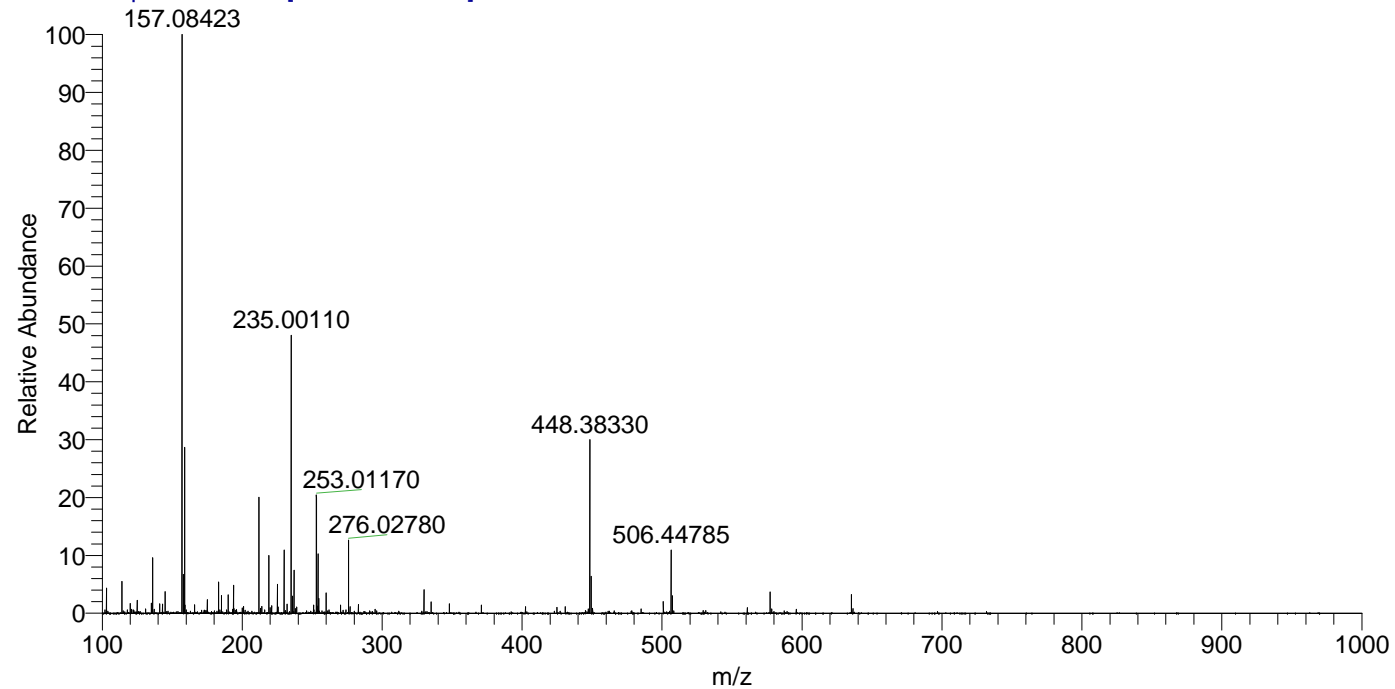


NL: 1.58E8
 Base Peak m/z= 100.00000-1500.00000
 F: FTMS + p ESI Full ms [100.00-1500.00] MS
 Eagrestis_HDX

Eagrestis_HDX#666 RT: 4.18
 T: FTMS + p ESI Full ms [100.00-1500.00]
 m/z= 225.10000-225.18000

m/z	Intensity	Relative	Delta (ppm)	Composition
225.15027	164891.7	100.00	-2.72	C ₉ H ₁₅ ² H ₄ O ₅ N
			4.16	C ₉ H ₁₃ ² H ₅ O ₅ N
			-9.60	C ₉ H ₁₇ ² H ₃ O ₅ N

Eagrestis_HDX #666 RT: 4.18 AV: 1 NL: 1.63E7
 T: FTMS + p ESI Full ms [100.00-1500.00]



NL: 1.73E5
 Base Peak m/z= 225.14875-225.15101 F:
 FTMS + p ESI Full ms [100.00-1500.00] MS
 Eagrestis_HDX

Eagrestis_HDX #666 RT: 4.18 AV: 1 NL: 1.78E6
 T: FTMS + p ESI Full ms [100.00-1500.00]

