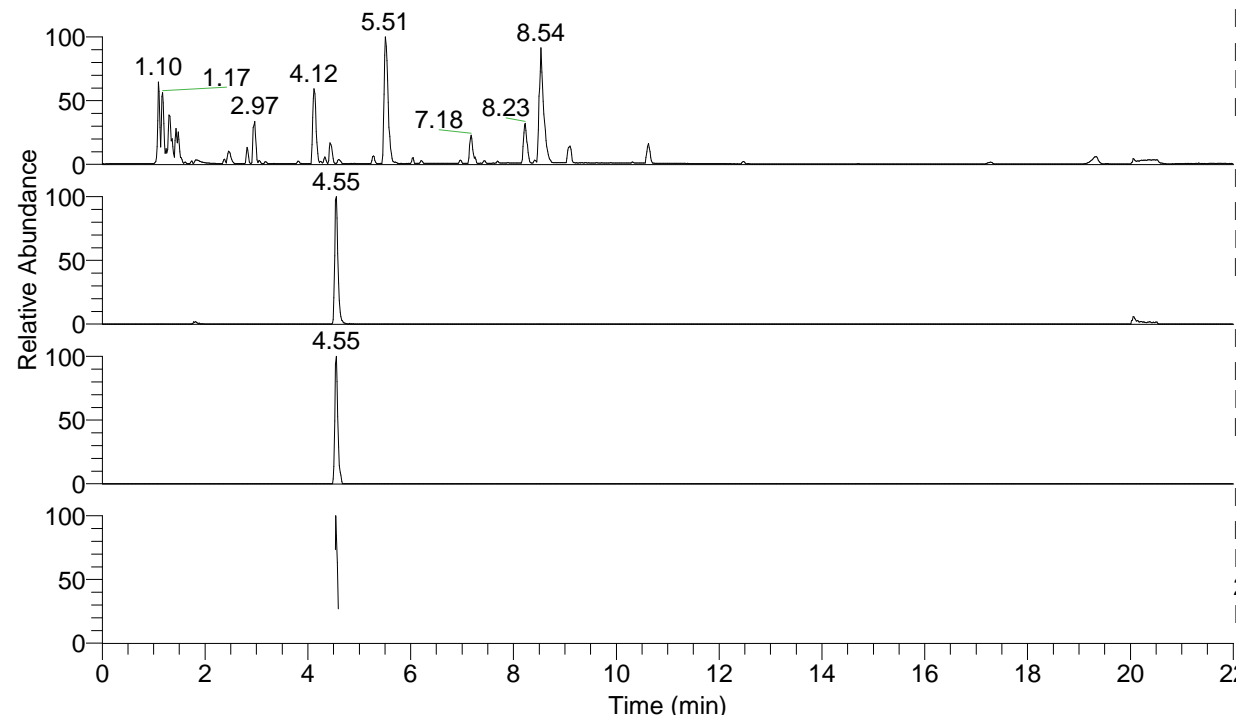


RT: 0.00 - 22.00



NL: 8.71E7
 Base Peak m/z= 100.00000-1500.00000 F:
 FTMS + p ESI Full ms [100.00-1500.00]
 MS Eagrestis

NL: 6.74E5
 Base Peak m/z= 220.11739-220.11959 F:
 FTMS + p ESI Full ms [100.00-1500.00]
 MS Eagrestis

NL: 6.11E4
 Base Peak m/z= 242.09923-242.10165 F:
 FTMS + p ESI Full ms [100.00-1500.00]
 MS Eagrestis

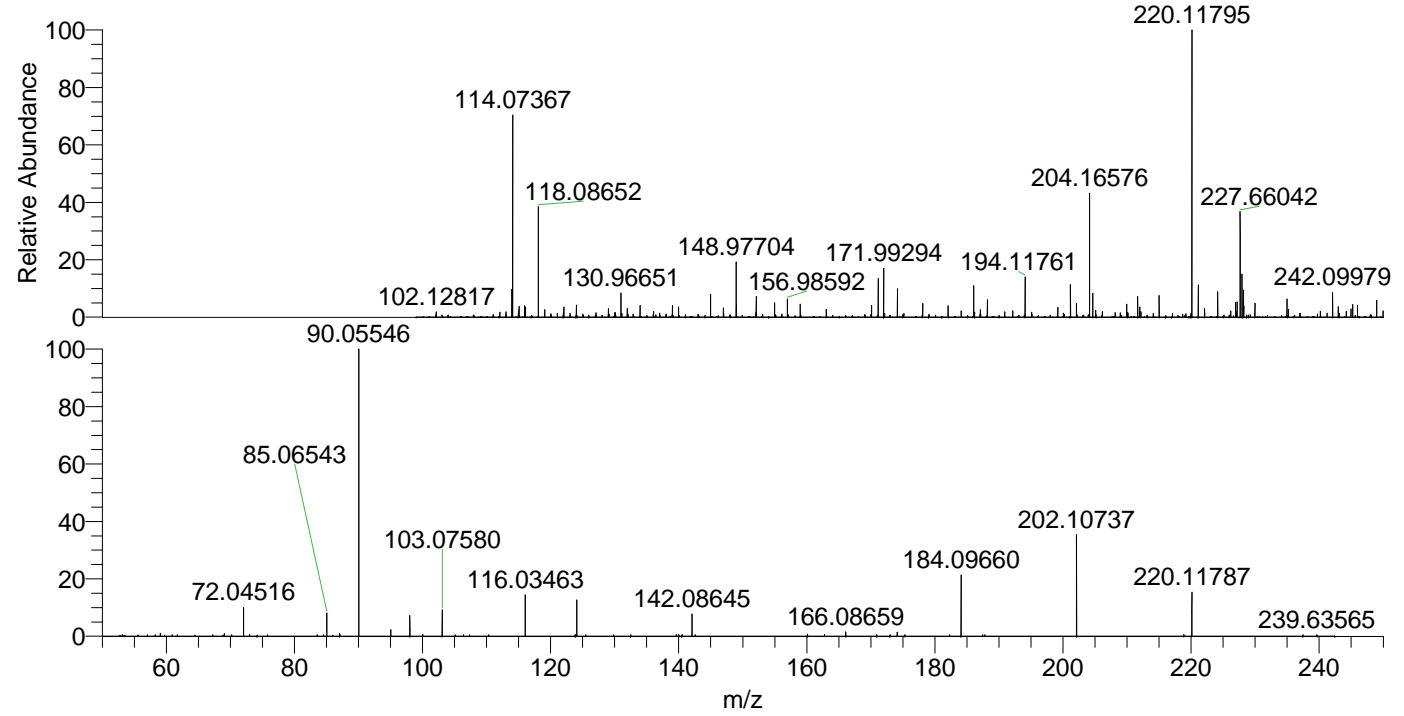
NL: 1.60E5
 Base Peak m/z= 50.00000-1500.00000 F:
 FTMS + p ESI d Full ms2
 220.12@hcd35.00 [50.00-240.00] MS
 Eagrestis

Eagrestis#1824-1848 RT: 4.53-4.59 AV:

F: FTMS + p ESI d Full ms2 220.12 ...

m/z= 50.00000-1000.00000

m/z	Intensity	Relative
59.05004	1084.6	1.04
69.07053	984.1	0.94
72.04516	10452.5	9.99
73.02906	678.5	0.65
84.53691	528.2	0.51
85.06543	8385.1	8.02
87.08084	979.5	0.94
90.05546	104588.3	100.00
95.04976	2479.3	2.37
98.02421	7555.3	7.22
100.03984	631.5	0.60
103.07580	9592.9	9.17
105.07959	549.3	0.53
107.33759	586.1	0.56
110.36110	543.9	0.52
116.03463	14987.0	14.33
123.85904	655.9	0.63
124.07597	13472.4	12.88
125.47359	569.5	0.54
132.51376	524.4	0.50
139.64444	599.9	0.57
140.50887	578.6	0.55
142.08645	8126.2	7.77
142.58378	570.8	0.55
160.09785	747.3	0.71
162.77242	614.2	0.59
166.08659	1574.4	1.51
170.93549	544.4	0.52
172.99926	546.8	0.52
174.11207	1482.1	1.42
175.33454	539.3	0.52
182.30250	556.7	0.53
184.09660	22624.2	21.63
187.79528	532.1	0.51
202.10737	37101.5	35.47
202.11787	568.1	0.54
218.86407	568.1	0.54
220.11787	16139.8	15.43
237.46454	533.2	0.51
239.63565	585.3	0.56



NL: 6.73E5
 Eagrestis#1831 RT: 4.55
 AV: 1 T: FTMS + p ESI
 Full ms [100.00-1500.00]

NL: 1.04E5
 Eagrestis#1773-1881 RT:
 4.53-4.59 AV: 5 F: FTMS
 + p ESI d Full ms2
 220.12@hcd35.00
 [50.00-240.00]