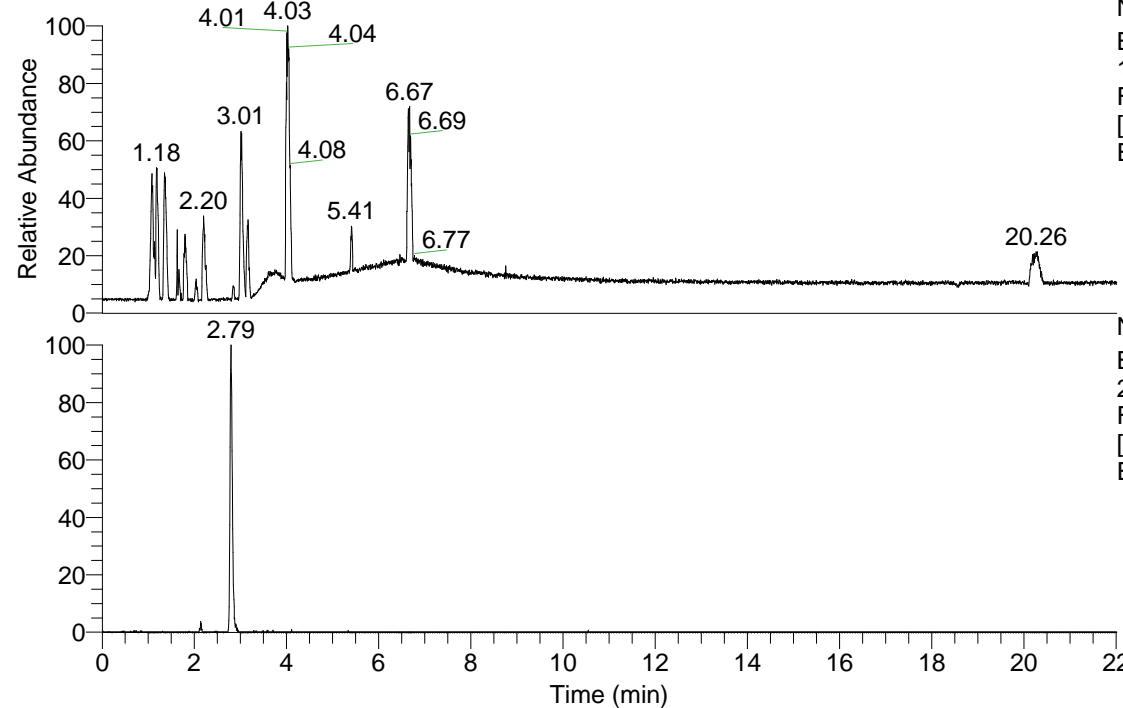


RT: 0.00 - 22.01



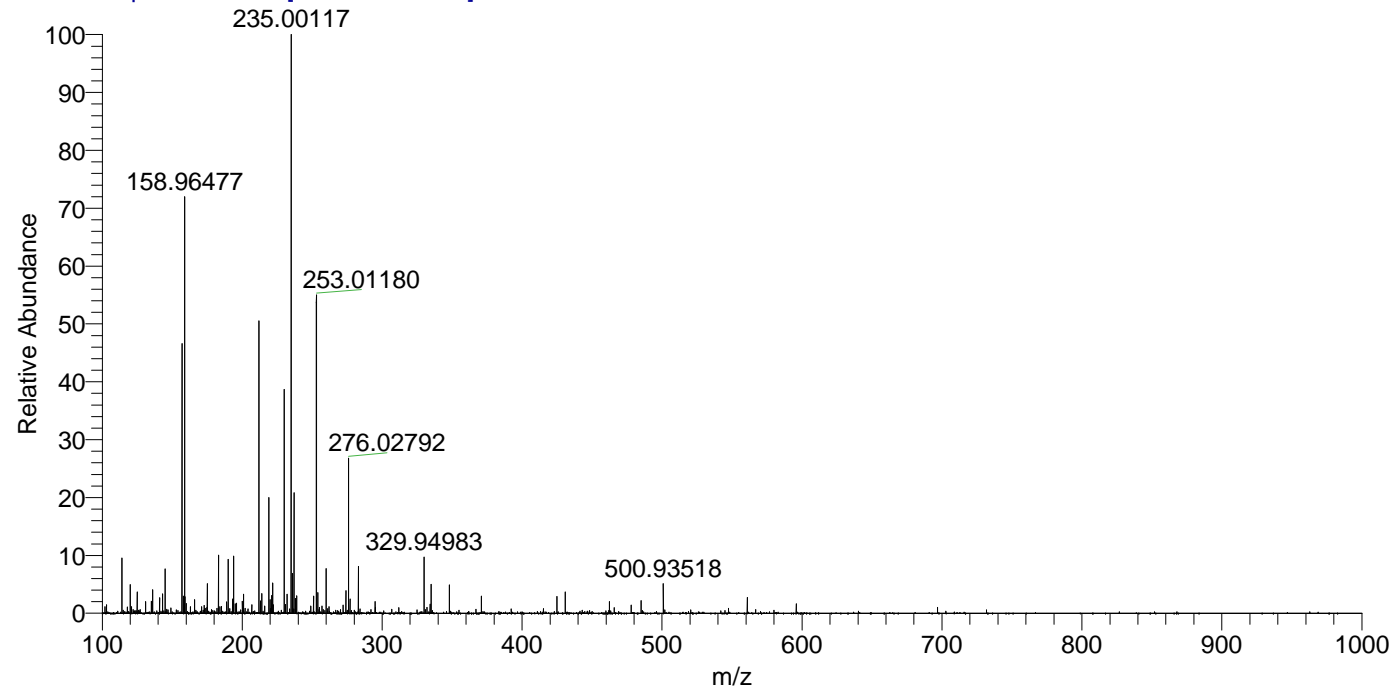
NL: 1.58E8
 Base Peak m/z= 100.00000-1500.00000
 F: FTMS + p ESI Full ms [100.00-1500.00] MS
 Eagrestis_HDX

NL: 5.68E5
 Base Peak m/z= 219.14441-219.14661 F:
 FTMS + p ESI Full ms [100.00-1500.00] MS
 Eagrestis_HDX

Eagrestis_HDX#437 RT: 2.79
 T: FTMS + p ESI Full ms [100.00-1500.00]
 m/z= 219.10000-220.00000

m/z	Intensity	Relative	Delta (ppm)	Composition
219.14597	568327.0	100.00	4.58	C ₁₀ H ₁₉ ² H O ₄ N

Eagrestis_HDX #437 RT: 2.79 AV: 1 NL: 6.99E6
 T: FTMS + p ESI Full ms [100.00-1500.00]



Eagrestis_HDX #437 RT: 2.79 AV: 1 NL: 1.40E6
 T: FTMS + p ESI Full ms [100.00-1500.00]

