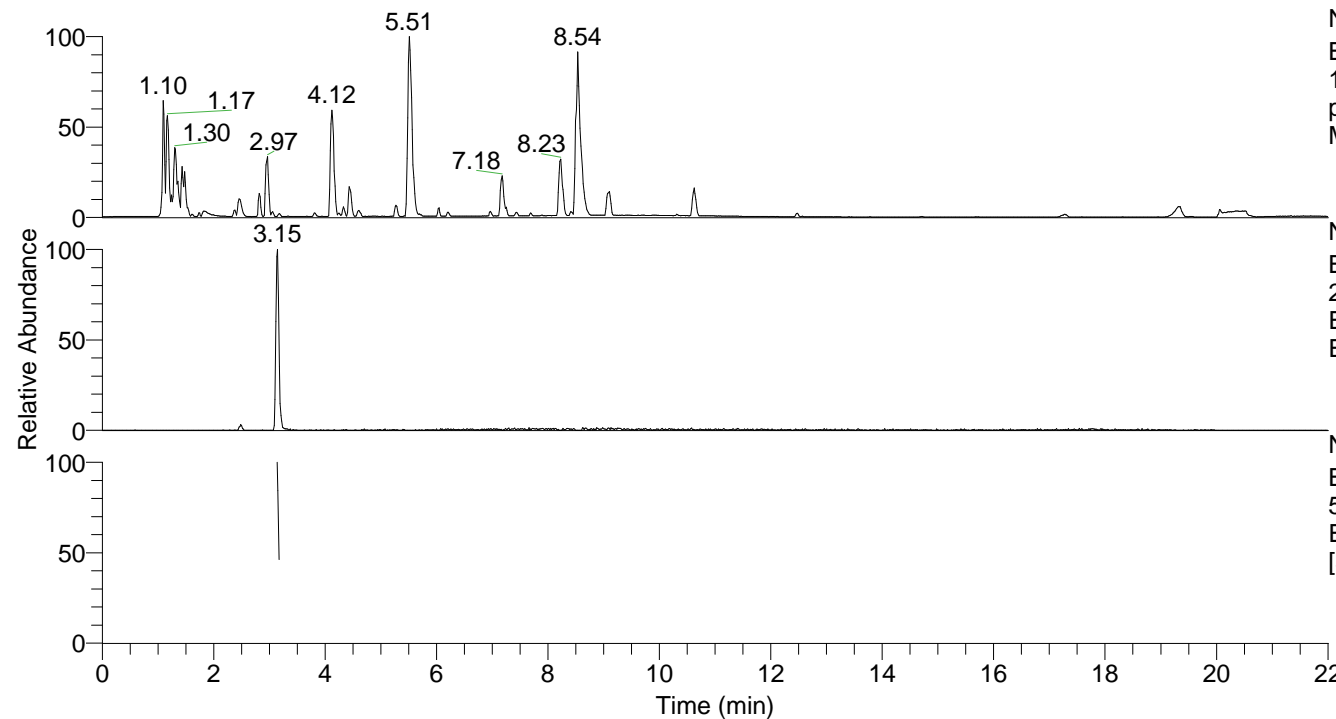


RT: 0.00 - 22.00



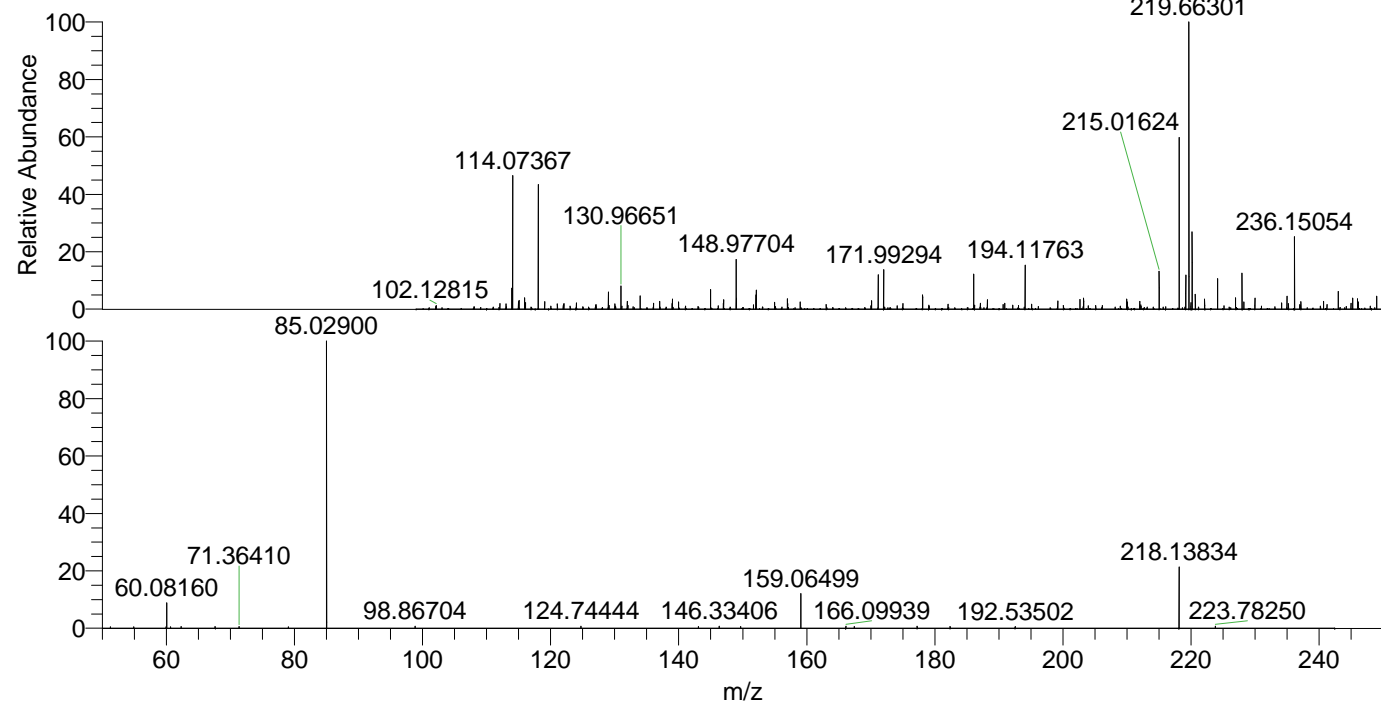
NL: 8.71E7  
 Base Peak m/z=  
 100.00000-1500.00000 F: FTMS +  
 p ESI Full ms [100.00-1500.00]  
 MS Eagrestis

NL: 4.74E5  
 Base Peak m/z=  
 218.13814-218.14032 F: FTMS + p  
 ESI Full ms [100.00-1500.00] MS  
 Eagrestis

NL: 1.90E5  
 Base Peak m/z=  
 50.00000-1500.00000 F: FTMS + p  
 ESI d Full ms2 218.14@hcd35.00  
 [50.00-240.00] MS Eagrestis

Eagrestis#1264-1278 RT: 3.14-3.17 AV:  
 F: FTMS + p ESI d Full ms2 218.14 ...  
 m/z= 50.00000-1000.00000

m/z	Intensity	Relative
54.91781	740.9	0.54
59.95678	752.9	0.55
60.08160	12288.2	8.90
60.66641	746.7	0.54
62.31989	889.8	0.64
67.63862	875.9	0.63
71.36410	885.4	0.64
79.05021	745.3	0.54
85.02900	138030.8	100.00
98.86704	957.2	0.69
124.74444	980.1	0.71
143.08962	904.4	0.66
146.33406	994.0	0.72
149.66343	839.9	0.61
159.06499	16693.7	12.09
166.09939	1034.6	0.75
167.41797	825.5	0.60
177.23253	939.5	0.68
182.38097	900.9	0.65
192.53502	923.2	0.67
218.13834	30573.1	22.15
223.78250	1056.2	0.77



NL: 7.82E5  
 Eagrestis#1267 RT: 3.15  
 AV: 1 T: FTMS + p ESI  
 Full ms [100.00-1500.00]

NL: 1.38E5  
 Eagrestis#1220-1332 RT:  
 3.14-3.17 AV: 3 F: FTMS  
 + p ESI d Full ms2  
 218.14@hcd35.00  
 [50.00-240.00]