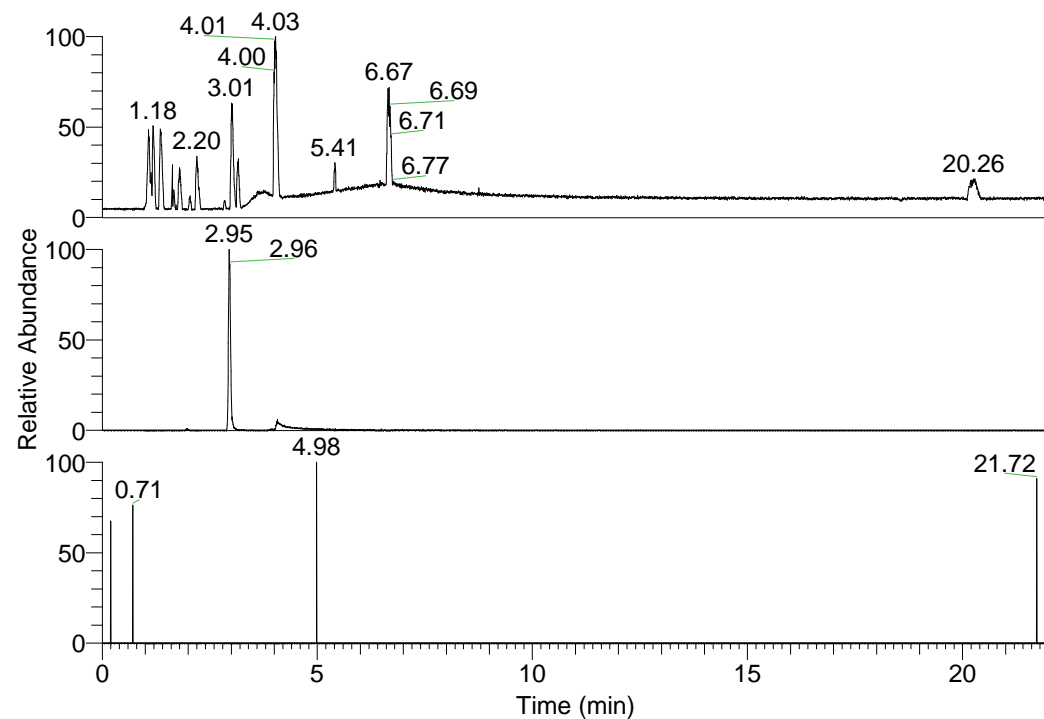


RT: 0.00 - 22.01



NL: 1.58E8  
Base Peak m/z=  
100.00000-1500.00000 F:  
FTMS + p ESI Full ms  
[100.00-1500.00] MS  
Eagrestis\_HDX

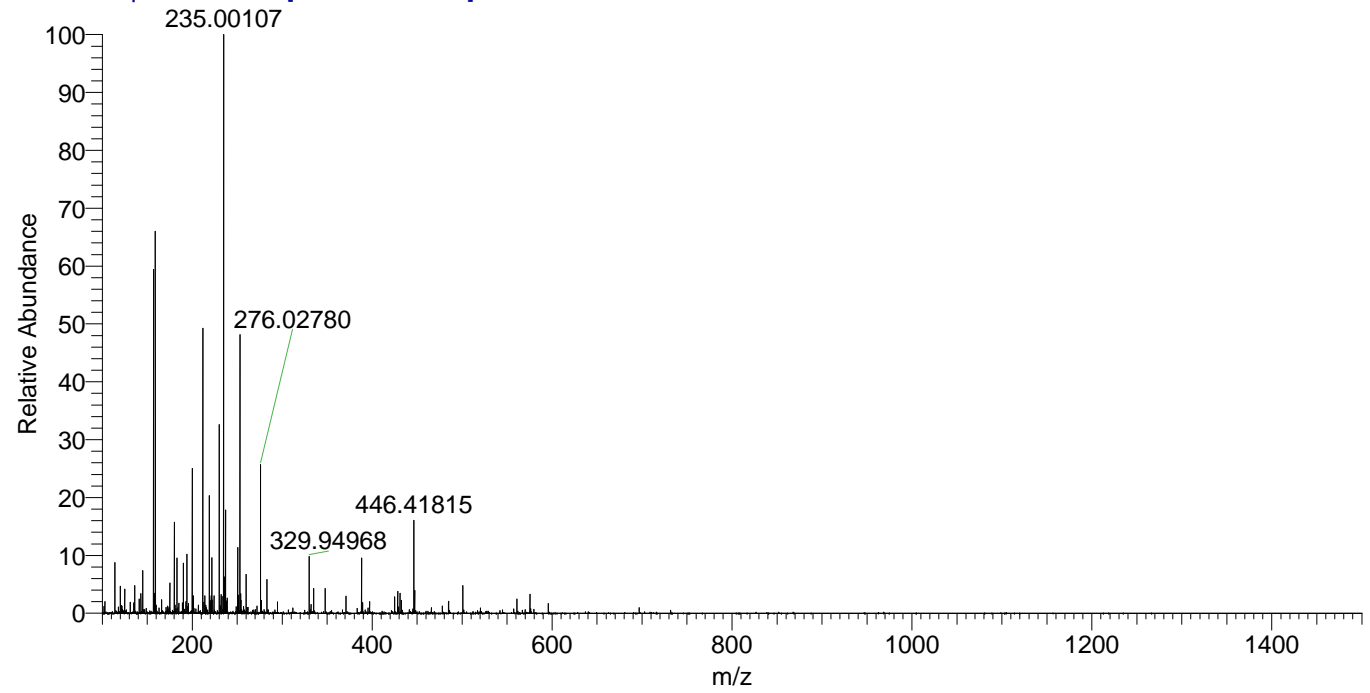
NL: 2.13E6  
Base Peak m/z=  
200.14374-200.14574 F:  
FTMS + p ESI Full ms  
[100.00-1500.00] MS  
Eagrestis\_HDX

NL: 2.42E3  
Base Peak m/z=  
101.07891-101.07993 F:  
FTMS + p ESI Full ms  
[100.00-1500.00] MS  
Eagrestis\_HDX

Eagrestis\_HDX#462 RT: 2.95  
T: FTMS + p ESI Full ms [100.00-1500.00]  
m/z= 200.00000-201.00000

m/z	Intensity	Relative	Delta (ppm)	Composition
200.14507	2125852.0	100.00	-3.35	C <sub>10</sub> H <sub>12</sub> <sup>2</sup> H <sub>4</sub> O <sub>2</sub> N <sub>2</sub>
			4.38	C <sub>10</sub> H <sub>10</sub> <sup>2</sup> H <sub>5</sub> O <sub>2</sub> N <sub>2</sub>

Eagrestis\_HDX #462 RT: 2.95 AV: 1 NL: 8.43E6  
T: FTMS + p ESI Full ms [100.00-1500.00]



Eagrestis\_HDX #462 RT: 2.95 AV: 1 NL: 2.11E6  
T: FTMS + p ESI Full ms [100.00-1500.00]

