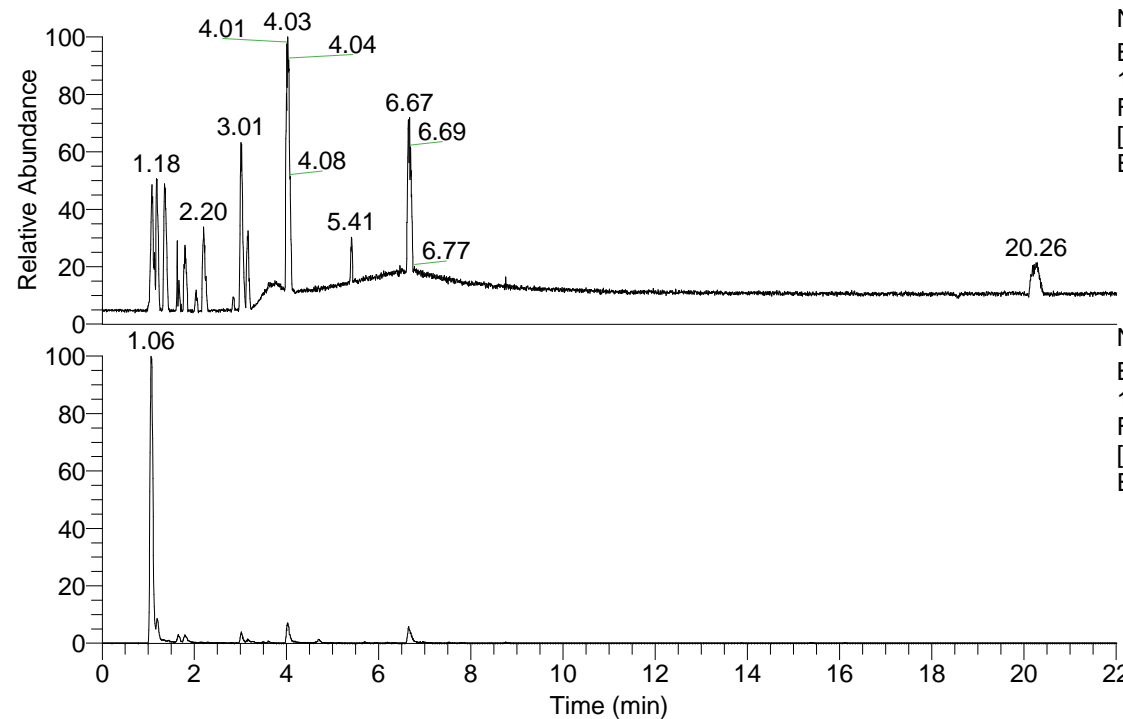


RT: 0.00 - 22.01



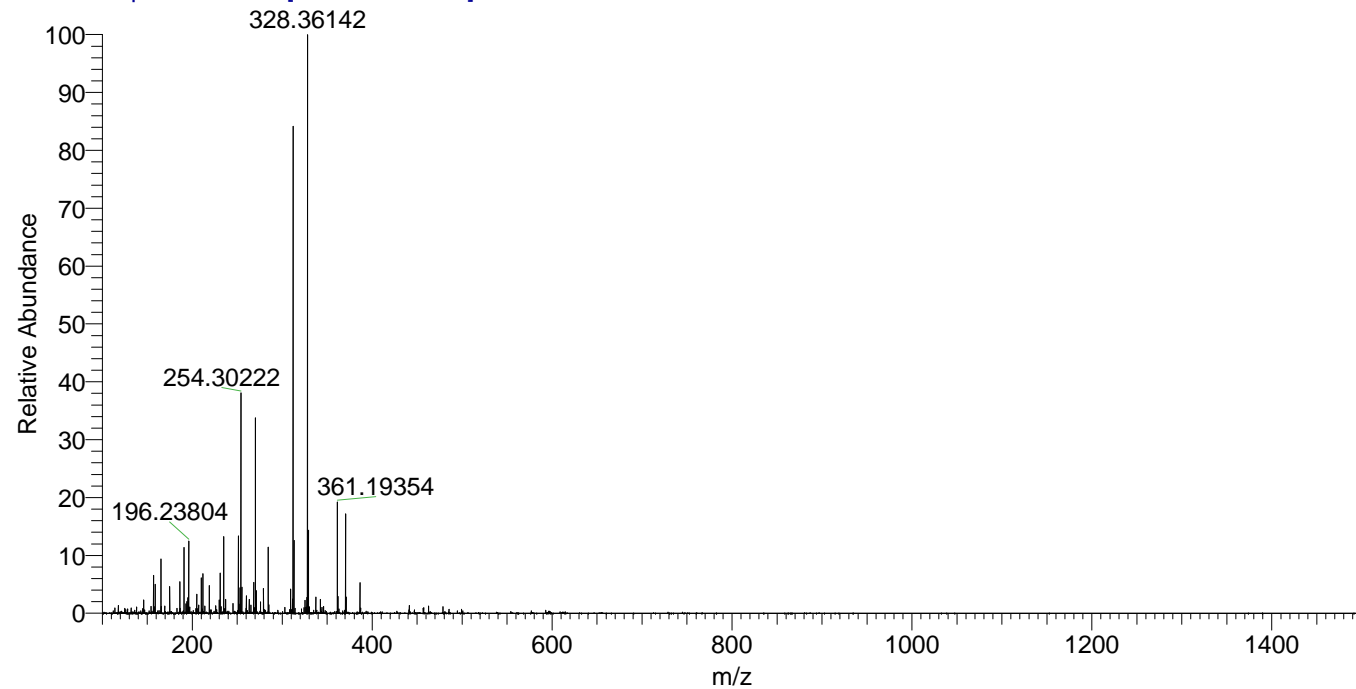
NL: 1.58E8  
Base Peak m/z=  
100.00000-1500.00000  
F: FTMS + p ESI Full ms  
[100.00-1500.00] MS  
Eagrestis\_HDX

Eagrestis\_HDX#159 RT: 1.06  
T: FTMS + p ESI Full ms [100.00-1500.00]  
m/z= 196.00000-197.00000

m/z	Intensity	Relative	Delta (ppm)	Composition
196.23804	7010672.5	100.00	-3.55	C <sub>8</sub> H <sub>16</sub> <sup>2</sup> H <sub>7</sub> N <sub>5</sub>
			4.34	C <sub>8</sub> H <sub>14</sub> <sup>2</sup> H <sub>8</sub> N <sub>5</sub>

NL: 7.01E6  
Base Peak m/z=  
196.23676-196.23872 F:  
FTMS + p ESI Full ms  
[100.00-1500.00] MS  
Eagrestis\_HDX

Eagrestis\_HDX #159 RT: 1.06 AV: 1 NL: 5.46E7  
T: FTMS + p ESI Full ms [100.00-1500.00]



Eagrestis\_HDX #159 RT: 1.06 AV: 1 NL: 6.82E6  
T: FTMS + p ESI Full ms [100.00-1500.00]

