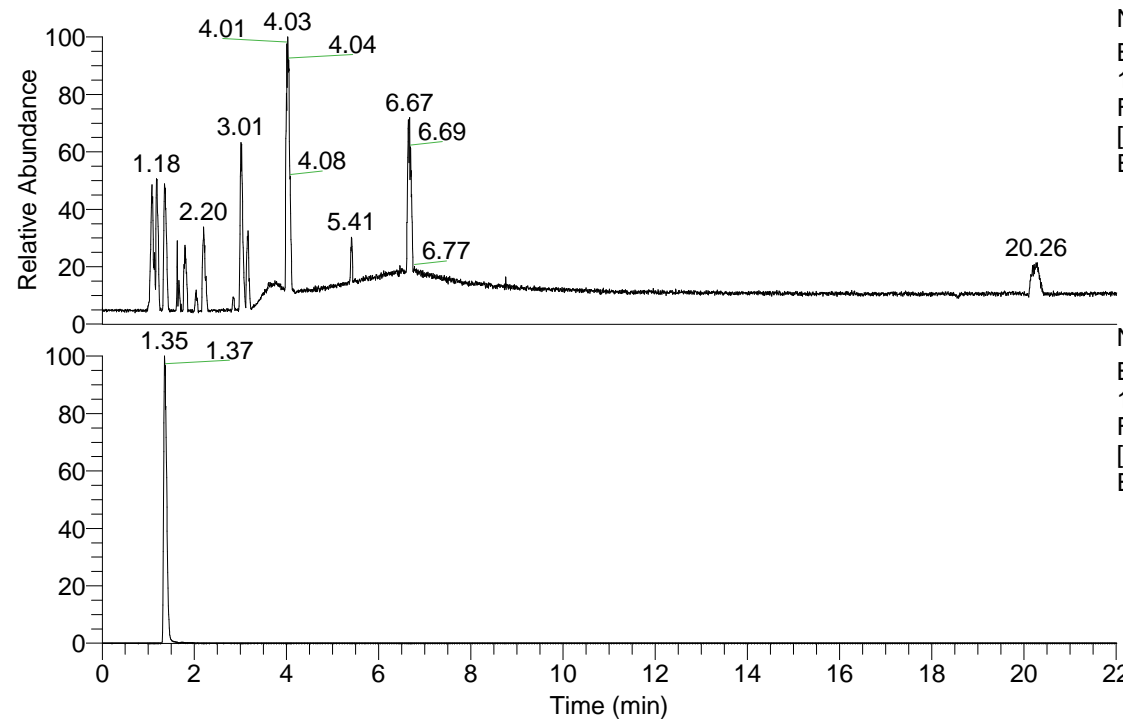


RT: 0.00 - 22.01



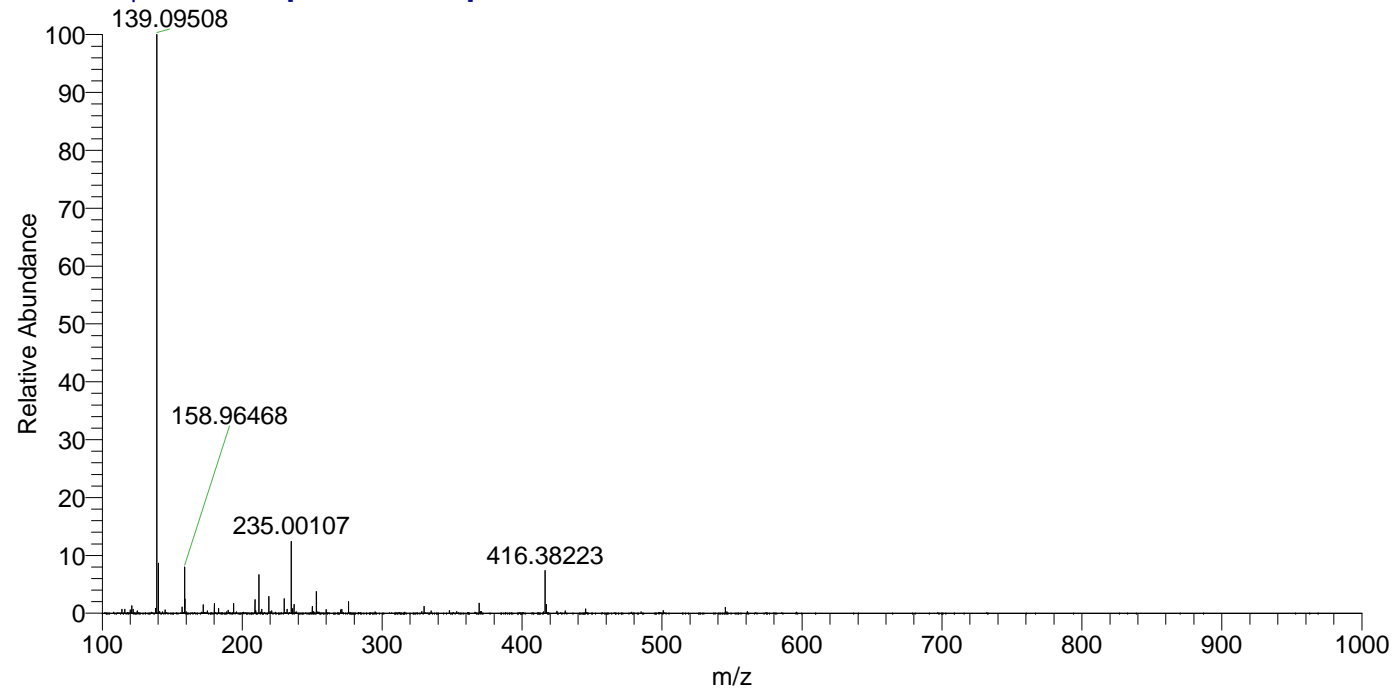
NL: 1.58E8
 Base Peak m/z= 100.00000-1500.00000
 F: FTMS + p ESI Full ms [100.00-1500.00] MS
 Eagrestis_HDX

Eagrestis_HDX#209 RT: 1.35
 T: FTMS + p ESI Full ms [100.00-1500.00]
 m/z= 139.00000-140.00000

m/z	Intensity	Relative	Delta (ppm)	Composition
139.09508	77317056.0	100.00	4.00	C ₈ H ₇ ² H ₃ O ₂ N
			-7.13	C ₈ H ₉ ² H ₂ O ₂ N
			15.13	C ₈ H ₅ ² H ₄ O ₂ N
			-18.26	C ₈ H ₁₁ ² H ₀ O ₂ N

NL: 7.73E7
 Base Peak m/z= 139.09436-139.09576 F:
 FTMS + p ESI Full ms [100.00-1500.00] MS
 Eagrestis_HDX

Eagrestis_HDX #209 RT: 1.35 AV: 1 NL: 7.62E7
 T: FTMS + p ESI Full ms [100.00-1500.00]



Eagrestis_HDX #209 RT: 1.35 AV: 1 NL: 7.62E7
 T: FTMS + p ESI Full ms [100.00-1500.00]

