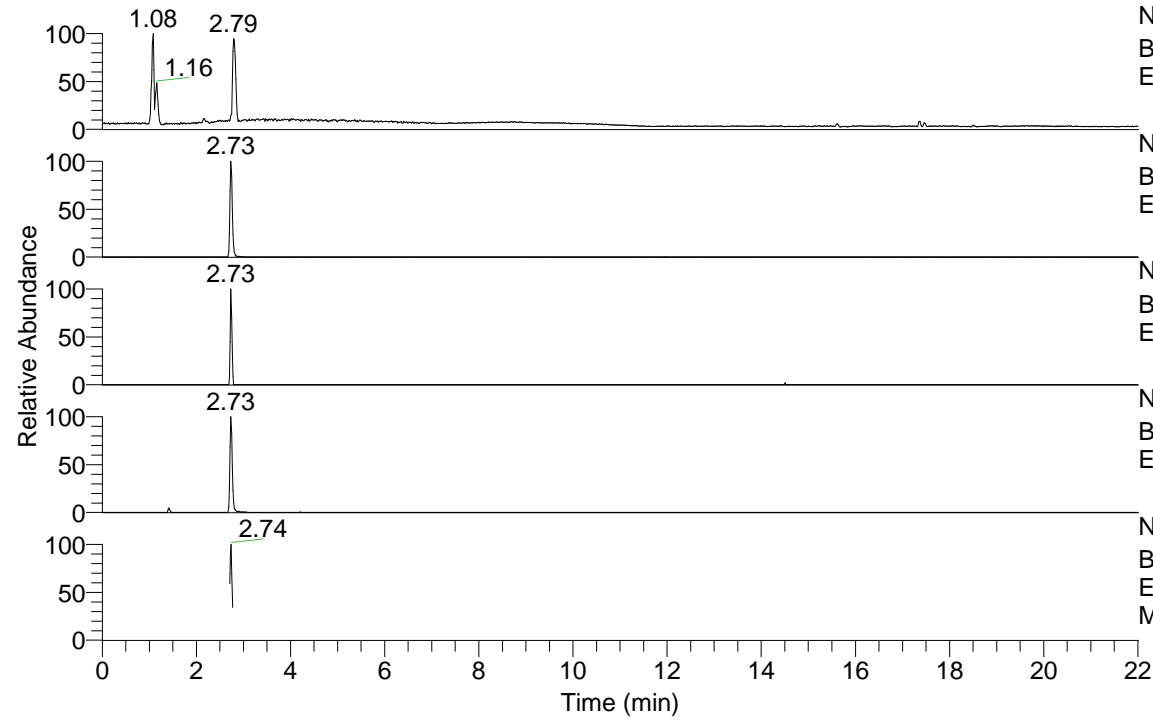


RT: 0.00 - 22.01



NL: 9.53E6  
Base Peak m/z= 50.00000-1500.00000 F: FTMS + p  
ESI Full ms [100.00-1500.00] MS Dcanities

NL: 1.38E6  
Base Peak m/z= 284.09807-284.10091 F: FTMS + p  
ESI Full ms [100.00-1500.00] MS Dcanities

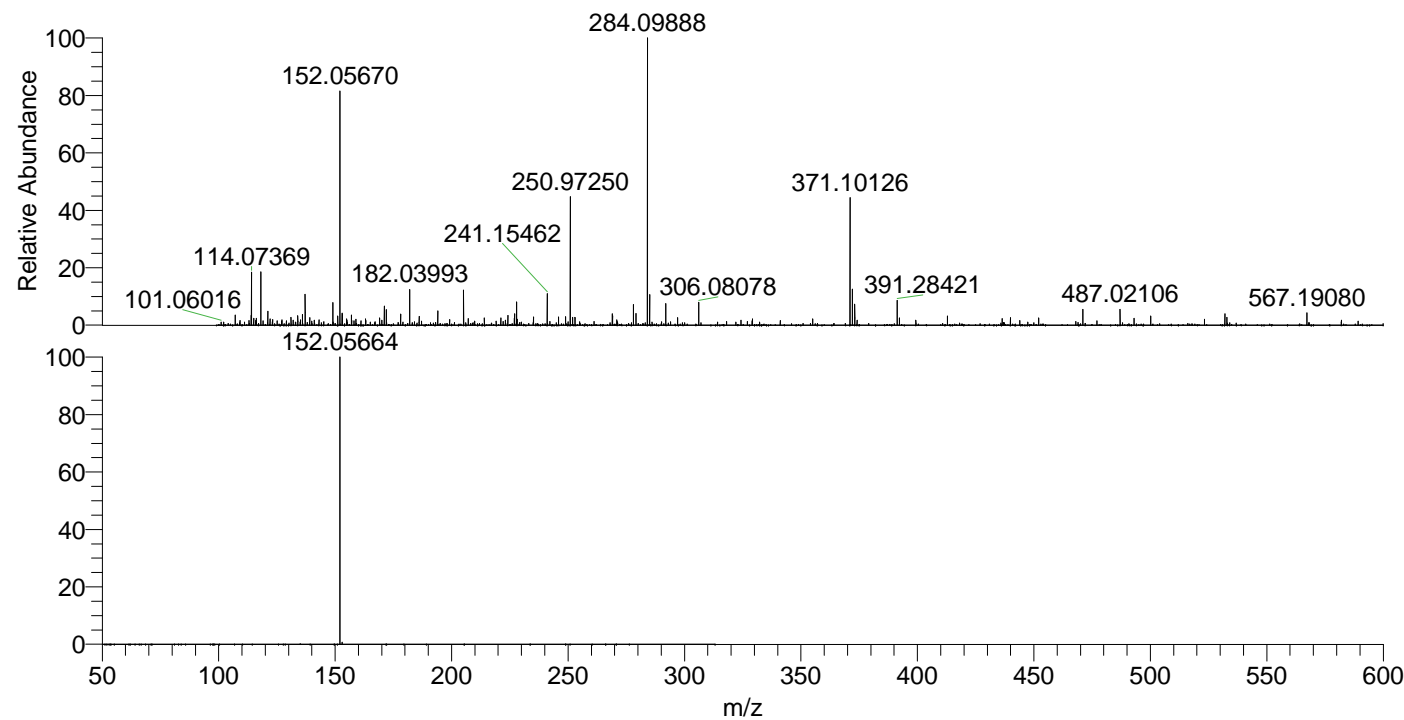
NL: 5.96E4  
Base Peak m/z= 567.18832-567.19400 F: FTMS + p  
ESI Full ms [100.00-1500.00] MS Dcanities

NL: 1.17E6  
Base Peak m/z= 152.05647-152.05799 F: FTMS + p  
ESI Full ms [100.00-1500.00] MS Dcanities

NL: 9.93E5  
Base Peak m/z= 50.00000-1500.00000 F: FTMS + p  
ESI d Full ms2 284.10@hcd35.00 [50.00-310.00]  
MS Dcanities

Dcanities#1078 RT: 2.73  
F: FTMS + p ESI d Full ms2 284.10 ...  
m/z= 50.00000-1000.00000

m/z	Intensity	Relative
152.05663	883418.4	100.00
153.04059	5942.1	0.67



NL: 1.34E6  
Dcanities#1081 RT: 2.73  
AV: 1 T: FTMS + p ESI  
Full lock ms  
[100.00-1500.00]

NL: 6.75E5  
Dcanities#1036-1147 RT:  
2.71-2.77 AV: 5 F: FTMS  
+ p ESI d Full ms2  
284.10@hcd35.00  
[50.00-310.00]