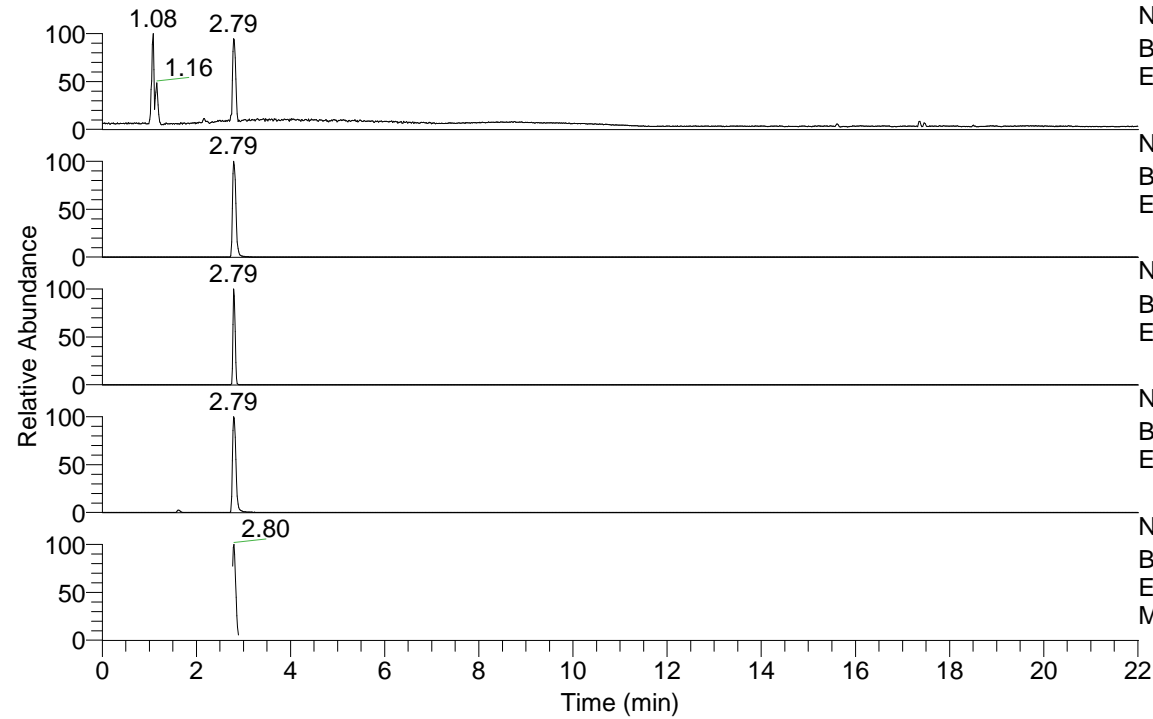


RT: 0.00 - 22.01



NL: 9.53E6  
 Base Peak m/z= 50.00000-1500.00000 F: FTMS + p  
 ESI Full ms [100.00-1500.00] MS Dcanities

NL: 3.20E6  
 Base Peak m/z= 269.08724-269.08994 F: FTMS + p  
 ESI Full ms [100.00-1500.00] MS Dcanities

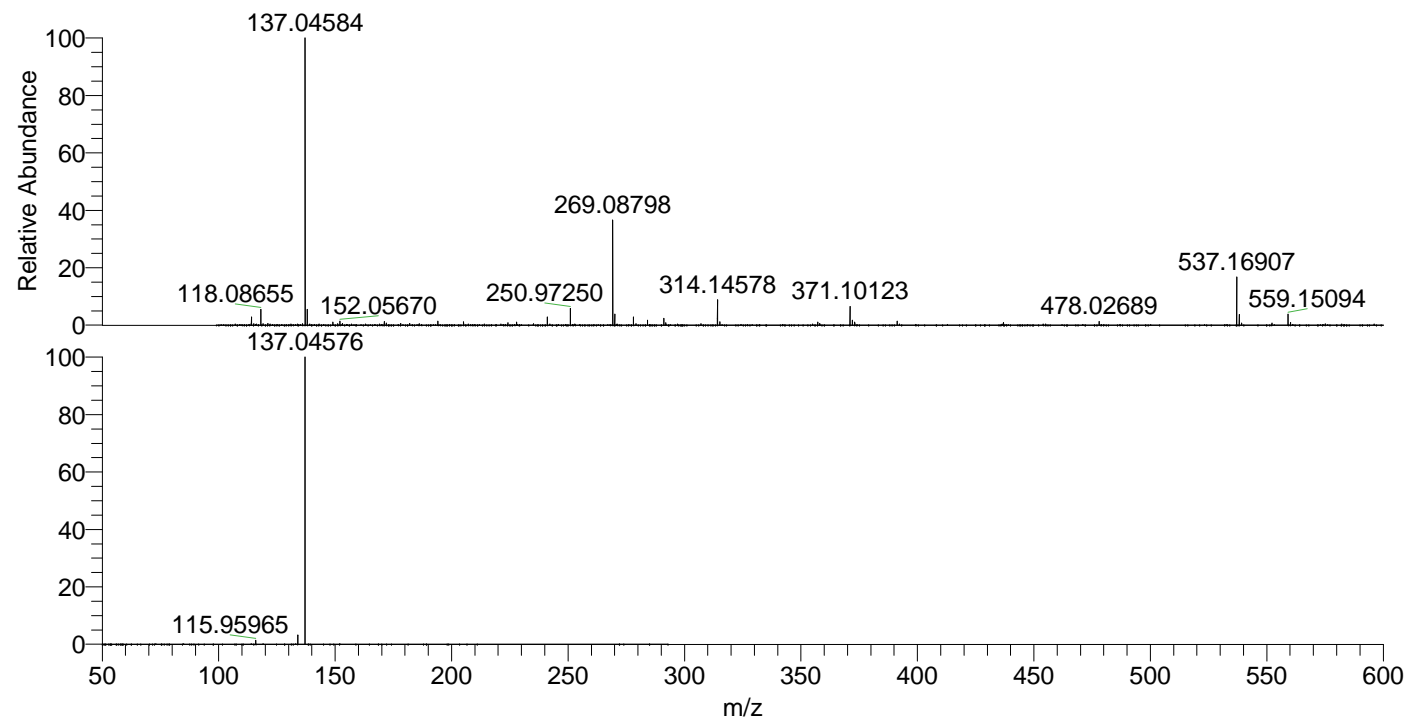
NL: 1.44E6  
 Base Peak m/z= 537.16667-537.17205 F: FTMS + p  
 ESI Full ms [100.00-1500.00] MS Dcanities

NL: 9.03E6  
 Base Peak m/z= 137.04565-137.04703 F: FTMS + p  
 ESI Full ms [100.00-1500.00] MS Dcanities

NL: 2.29E6  
 Base Peak m/z= 50.00000-1500.00000 F: FTMS + p  
 ESI d Full ms2 269.09@hcd35.00 [50.00-290.00]  
 MS Dcanities

Dcanities#1096-1146 RT: 2.77-2.89 AV: 9  
 F: FTMS + p ESI d Full ms2 269.09@h ...  
 m/z= 50.00000-1000.00000

m/z	Intensity	Relative
115.95965	17261.4	1.41
133.96991	40758.0	3.32
137.04576	1227357.6	100.00



NL: 8.60E6  
 Dcanities#1105 RT: 2.79  
 AV: 1 T: FTMS + p ESI  
 Full lock ms  
 [100.00-1500.00]

NL: 1.23E6  
 Dcanities#1048-1159 RT:  
 2.77-2.89 AV: 9 F: FTMS  
 + p ESI d Full ms2  
 269.09@hcd35.00  
 [50.00-290.00]