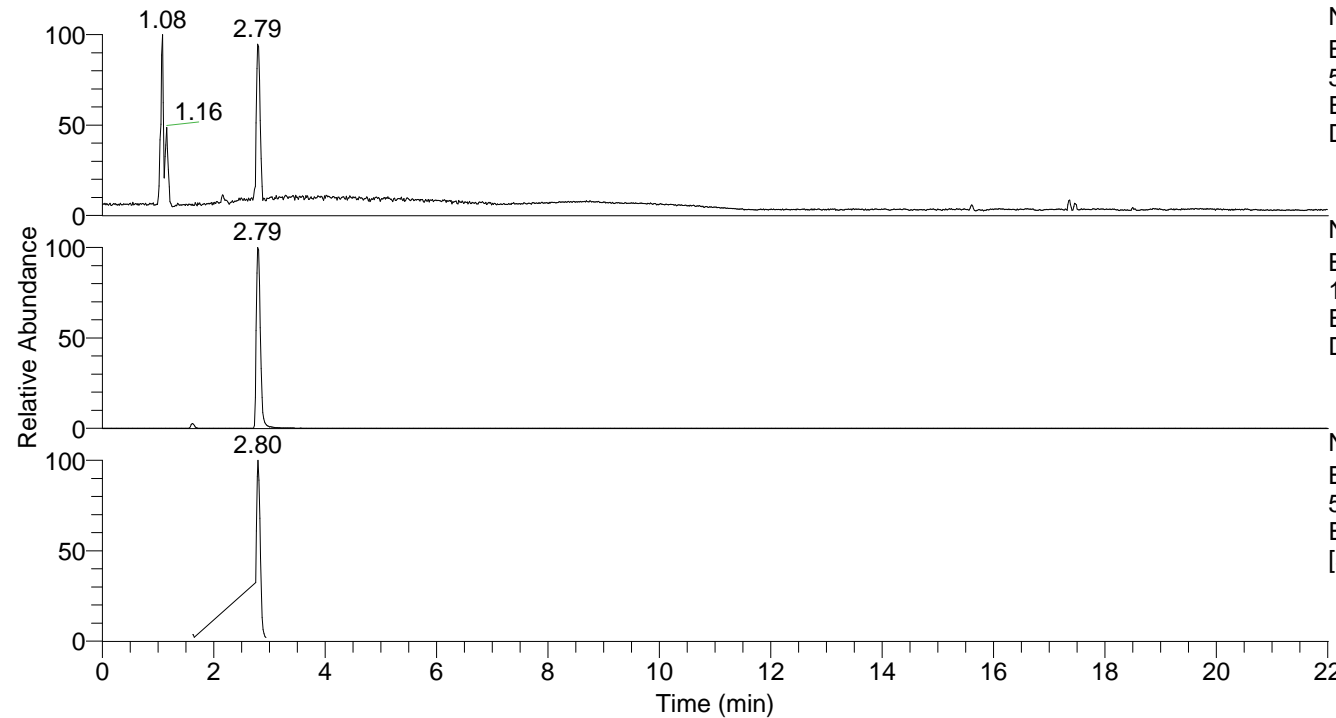


RT: 0.00 - 22.01



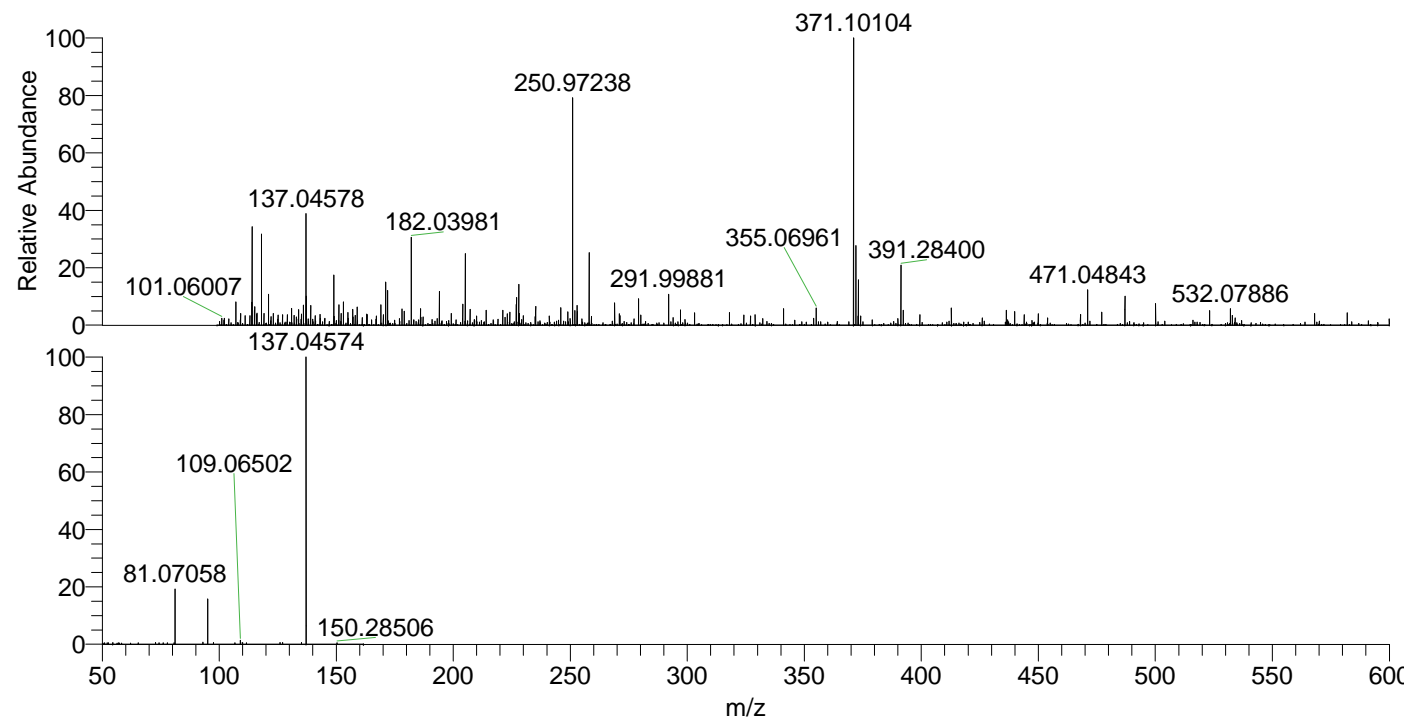
NL: 9.53E6
 Base Peak m/z=
 50.00000-1500.00000 F: FTMS + p
 ESI Full ms [100.00-1500.00] MS
 Dcanities

NL: 9.03E6
 Base Peak m/z=
 137.04565-137.04703 F: FTMS + p
 ESI Full ms [100.00-1500.00] MS
 Dcanities

NL: 4.42E6
 Base Peak m/z=
 50.00000-1500.00000 F: FTMS + p
 ESI d Full ms2 137.05@hcd35.00
 [50.00-160.00] MS Dcanities

Dcanities#641-654 RT: 1.62-1.65 AV: 3
 F: FTMS + p ESI d Full ms2 137.05 ...
 m/z= 50.00000-1000.00000

m/z	Intensity	Relative
51.07145	681.4	0.51
52.05599	704.6	0.52
57.07060	689.4	0.51
65.32874	742.4	0.55
72.82586	764.7	0.57
74.23417	680.7	0.51
76.07546	677.8	0.50
80.71478	731.2	0.54
81.07058	26015.6	19.38
93.07055	914.8	0.68
95.08602	21315.4	15.88
97.48346	856.5	0.64
106.72823	705.3	0.53
109.06502	1893.1	1.41
109.10129	1040.4	0.77
110.03476	860.6	0.64
111.56777	727.2	0.54
125.97862	751.2	0.56
127.09564	804.2	0.60
135.20302	830.8	0.62
137.02638	1121.5	0.84
137.04574	134252.2	100.00
137.06048	966.6	0.72
137.09526	932.3	0.69
137.13245	8637.4	6.43
150.28506	689.1	0.51



NL: 5.98E5
 Dcanities#643 RT: 1.63
 AV: 1 T: FTMS + p ESI
 Full lock ms
 [100.00-1500.00]

NL: 1.34E5
 Dcanities#636-655 RT:
 1.62-1.65 AV: 3 F: FTMS
 + p ESI d Full ms2
 137.05@hcd35.00
 [50.00-160.00]