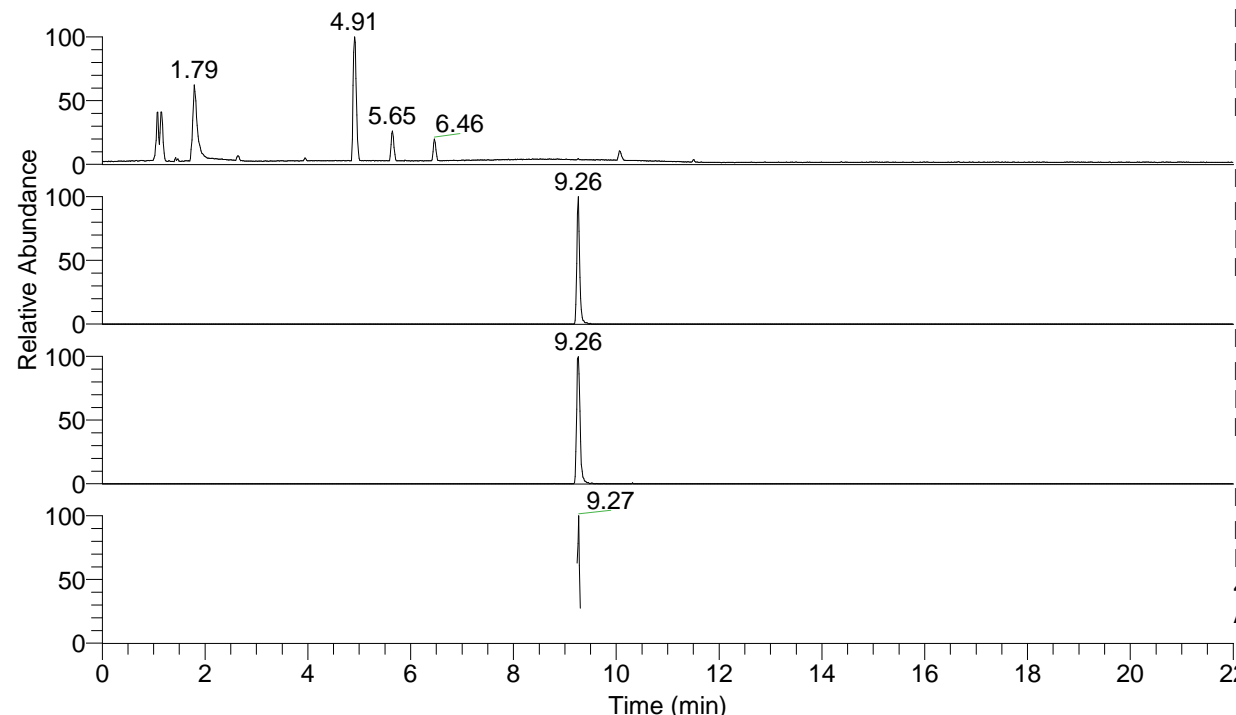


RT: 0.00 - 22.01



NL: 1.75E7
 Base Peak m/z= 100.00000-1500.00000 F:
 FTMS + p ESI Full ms [100.00-1500.00]
 MS Ariadnaap

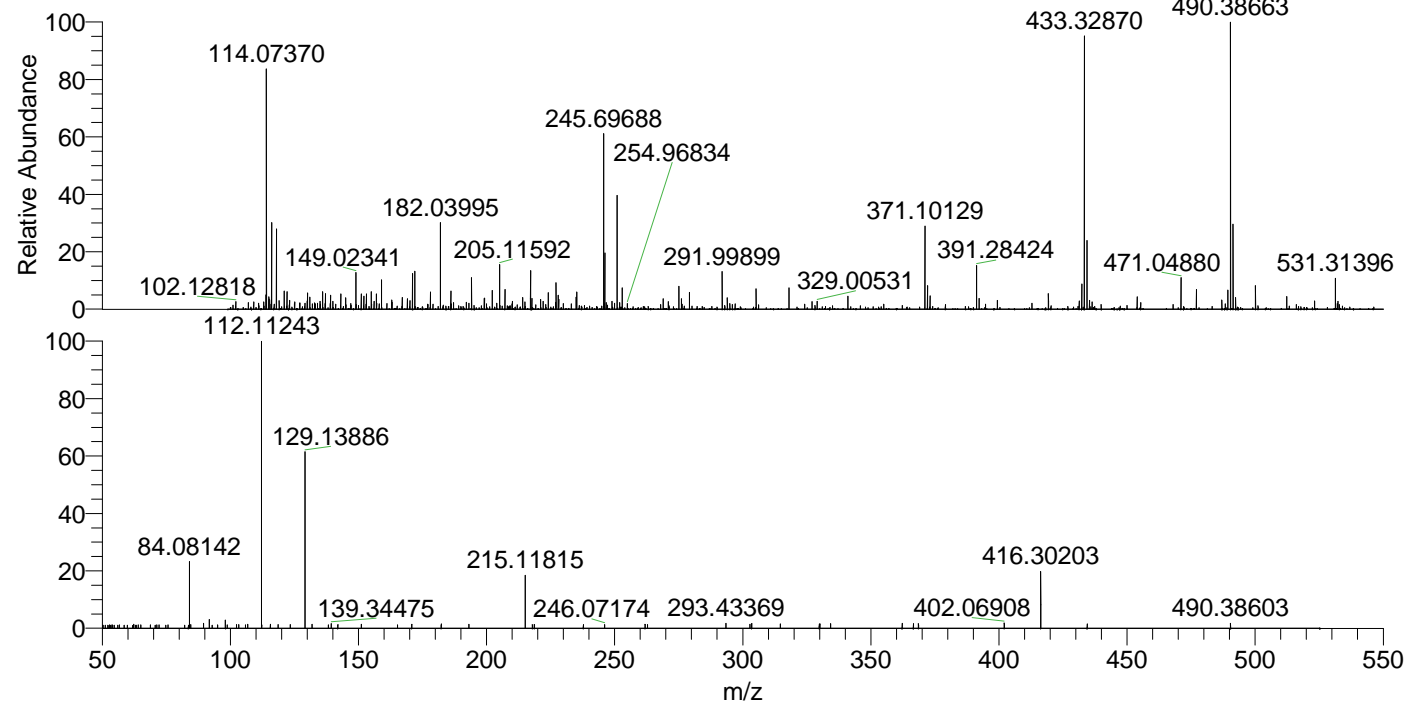
NL: 8.19E5
 Base Peak m/z= 490.38450-490.38940 F:
 FTMS + p ESI Full ms [100.00-1500.00]
 MS Ariadnaap

NL: 5.00E5
 Base Peak m/z= 245.69616-245.69862 F:
 FTMS + p ESI Full ms [100.00-1500.00]
 MS Ariadnaap

NL: 9.94E4
 Base Peak m/z= 50.00000-1500.00000 F:
 FTMS + p ESI d Full ms2
 490.39@hcd35.00 [50.00-520.00] MS
 Ariadnaap

Ariadnaap#3671-3693 RT: 9.24-9.30 AV:
 F: FTMS + p ESI d Full ms2 490.39 ...
 m/z= 50.00000-1000.00000

m/z	Intensity	Relative
53.78473	739.9	1.19
62.28439	845.6	1.36
65.03795	714.6	1.15
68.82285	753.0	1.21
71.33759	734.8	1.18
72.15817	718.0	1.16
75.64772	756.4	1.22
84.08142	14669.2	23.62
84.56661	820.8	1.32
89.52774	1123.1	1.81
91.75792	1901.8	3.06
92.90134	715.7	1.15
95.06730	760.0	1.22
98.09697	1772.8	2.86
98.75753	762.7	1.23
102.41415	813.3	1.31
103.33634	795.7	1.28
105.90581	757.2	1.22
106.72936	870.8	1.40
112.11243	62092.6	100.00
112.28654	766.1	1.23
115.59828	896.6	1.44
118.64047	771.8	1.24
123.36801	828.2	1.33
129.13886	38940.4	62.71
131.89700	871.8	1.40
138.23392	764.9	1.23
139.34475	1006.3	1.62
141.95449	807.2	1.30
151.14846	848.0	1.37
165.25274	772.5	1.24
170.81475	867.0	1.40
182.31217	935.2	1.51
193.14886	899.3	1.45
215.11815	11421.1	18.39
217.91164	814.2	1.31
218.66512	827.4	1.33
237.78820	851.6	1.37
246.07174	781.7	1.26
261.89314	843.4	1.36
262.81629	830.6	1.34
293.43369	1082.0	1.74
302.80039	890.1	1.43
303.49818	1060.6	1.71
314.68571	921.1	1.48
329.86920	963.2	1.55
330.11218	958.3	1.54
334.28241	1013.5	1.63
362.25032	1065.9	1.72
366.60686	988.7	1.59
368.57781	991.2	1.60
402.06908	1136.0	1.83
416.30203	12274.9	19.77
434.46089	948.8	1.53
490.38603	1120.2	1.80



NL: 7.87E5
 Ariadnaap#3679 RT: 9.26
 AV: 1 T: FTMS + p ESI
 Full lock ms
 [100.00-1500.00]

NL: 6.20E4
 Ariadnaap#3667-3698
 RT: 9.24-9.30 AV: 5 F:
 FTMS + p ESI d Full ms2
 490.39@hcd35.00
 [50.00-520.00]