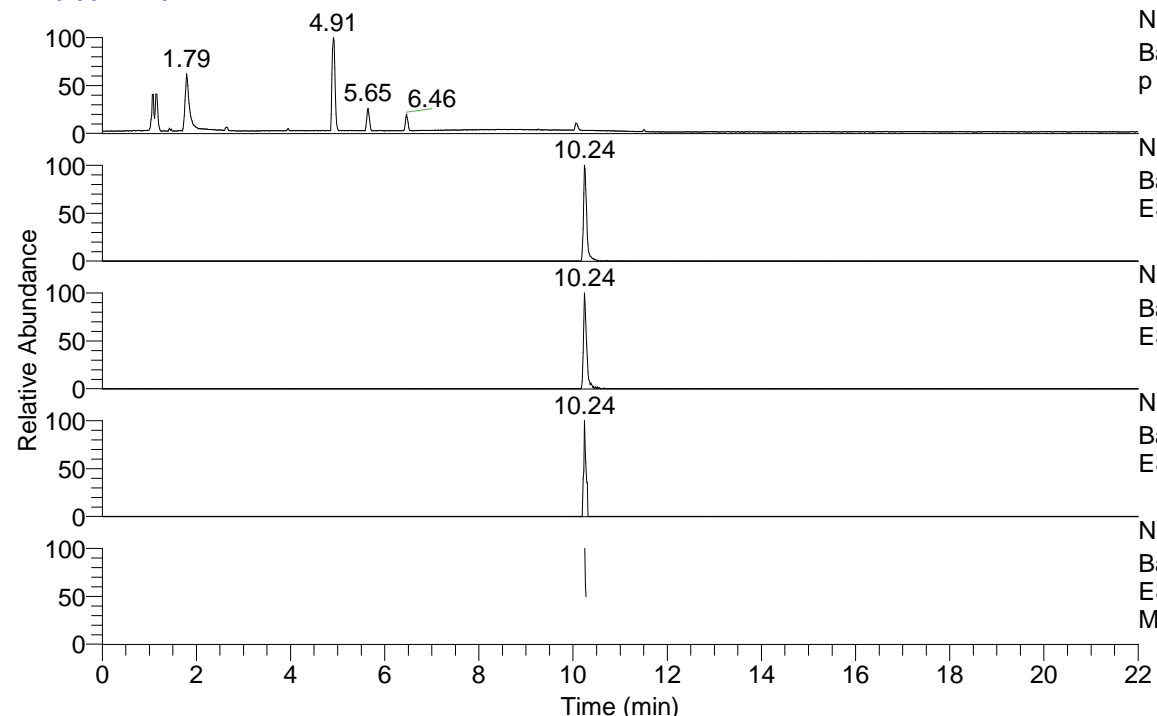


RT: 0.00 - 22.01



NL: 1.75E7
 Base Peak m/z= 100.00000-1500.00000 F: FTMS + p ESI Full ms [100.00-1500.00] MS Ariadnaap

NL: 2.80E5
 Base Peak m/z= 489.38925-489.39415 F: FTMS + p ESI Full ms [100.00-1500.00] MS Ariadnaap

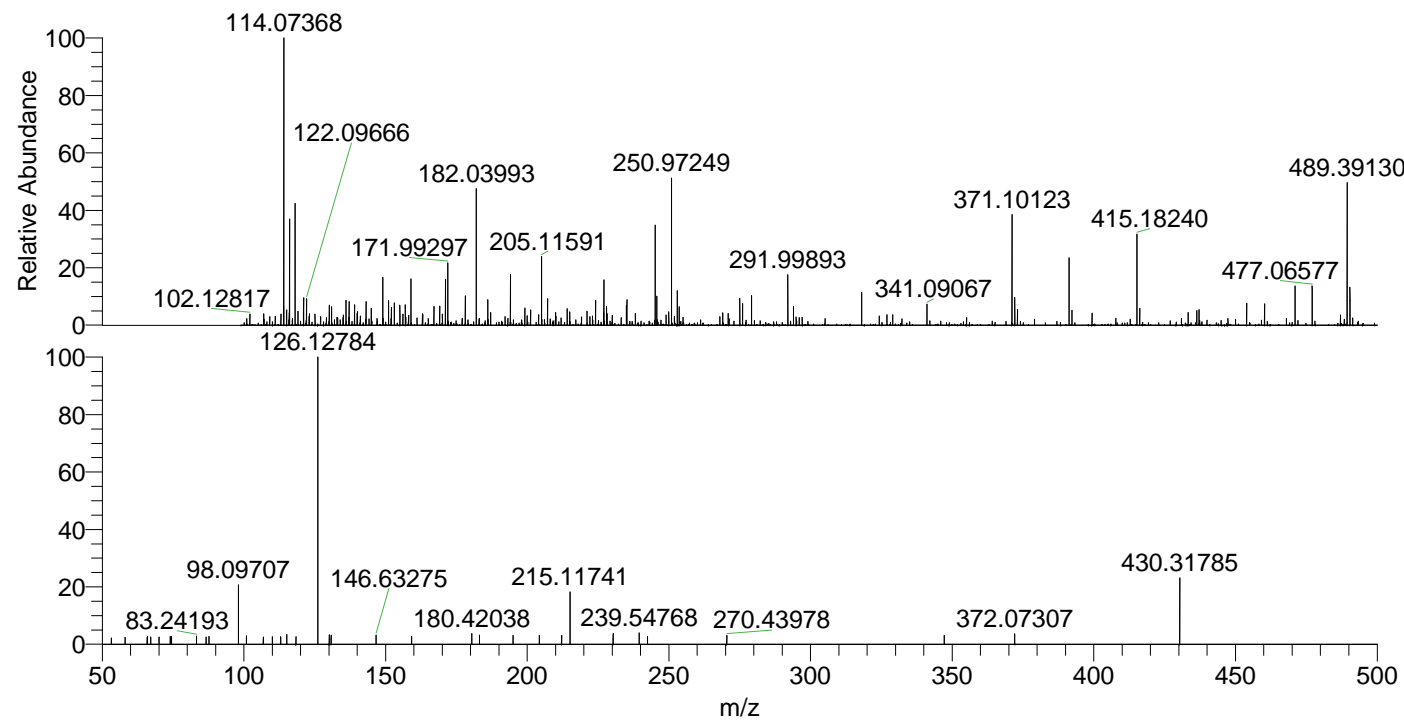
NL: 1.90E5
 Base Peak m/z= 245.19853-245.20099 F: FTMS + p ESI Full ms [100.00-1500.00] MS Ariadnaap

NL: 1.45E4
 Base Peak m/z= 603.38154-603.38758 F: FTMS + p ESI Full ms [100.00-1500.00] MS Ariadnaap

NL: 7.46E4
 Base Peak m/z= 50.00000-1500.00000 F: FTMS + p ESI d Full ms2 489.39@hcd35.00 [50.00-515.00] MS Ariadnaap

Ariadnaap#4072-4083 RT: 10.25-10.28
 F: FTMS + p ESI d Full ms2 489.39 ...
 m/z= 50.00000-1000.00000

m/z	Intensity	Relative
53.27444	1038.9	2.15
58.06616	1133.9	2.35
65.92455	1140.2	2.36
66.02678	1302.4	2.70
67.13845	1169.5	2.42
70.06553	1191.0	2.47
74.03656	1309.9	2.71
74.41291	1290.1	2.67
83.24193	1325.5	2.75
86.63911	1195.4	2.48
87.67940	1291.4	2.68
98.09707	9697.3	20.09
100.85516	1375.8	2.85
106.83512	1199.7	2.49
110.03083	1225.1	2.54
112.96127	1221.8	2.53
115.09945	1594.7	3.30
118.35669	1224.4	2.54
126.12784	48262.7	100.00
130.10833	1579.1	3.27
130.78321	1472.7	3.05
146.63275	1468.8	3.04
159.21436	1316.5	2.73
180.42038	1777.2	3.68
183.18536	1497.2	3.10
194.98326	1422.5	2.95
204.24235	1434.3	2.97
212.13365	1488.4	3.08
215.11741	8505.8	17.62
230.32142	1774.0	3.68
239.54768	1876.7	3.89
242.44271	1313.5	2.72
270.43978	1460.2	3.03
347.17955	1479.1	3.06
372.07307	1682.3	3.49
430.31785	10878.1	22.54



NL: 5.44E5
 Ariadnaap#4069 RT: 10.24 AV: 1 T: FTMS + p ESI Full lock ms [100.00-1500.00]

NL: 4.66E4
 Ariadnaap#4062-4084 RT: 10.25-10.28 AV: 3 F: FTMS + p ESI d Full ms2 489.39@hcd35.00 [50.00-515.00]