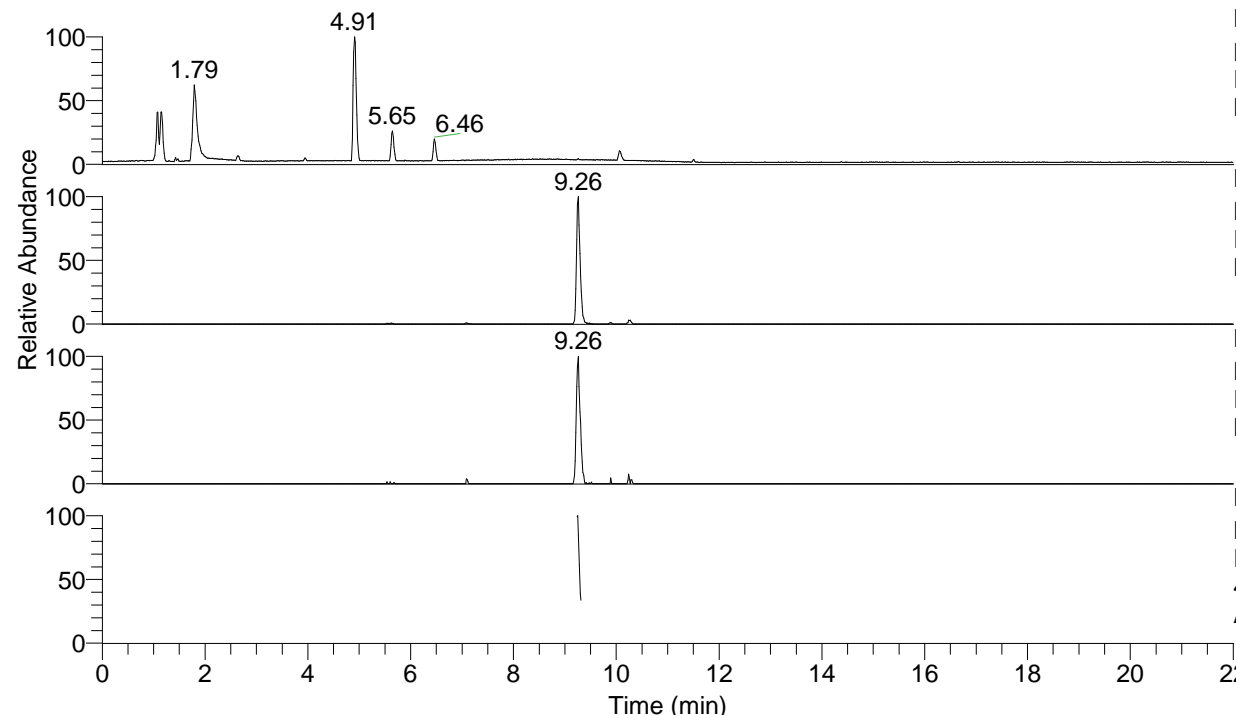


RT: 0.00 - 22.01



NL: 1.75E7  
 Base Peak m/z= 100.00000-1500.00000 F:  
 FTMS + p ESI Full ms [100.00-1500.00]  
 MS Ariadnaap

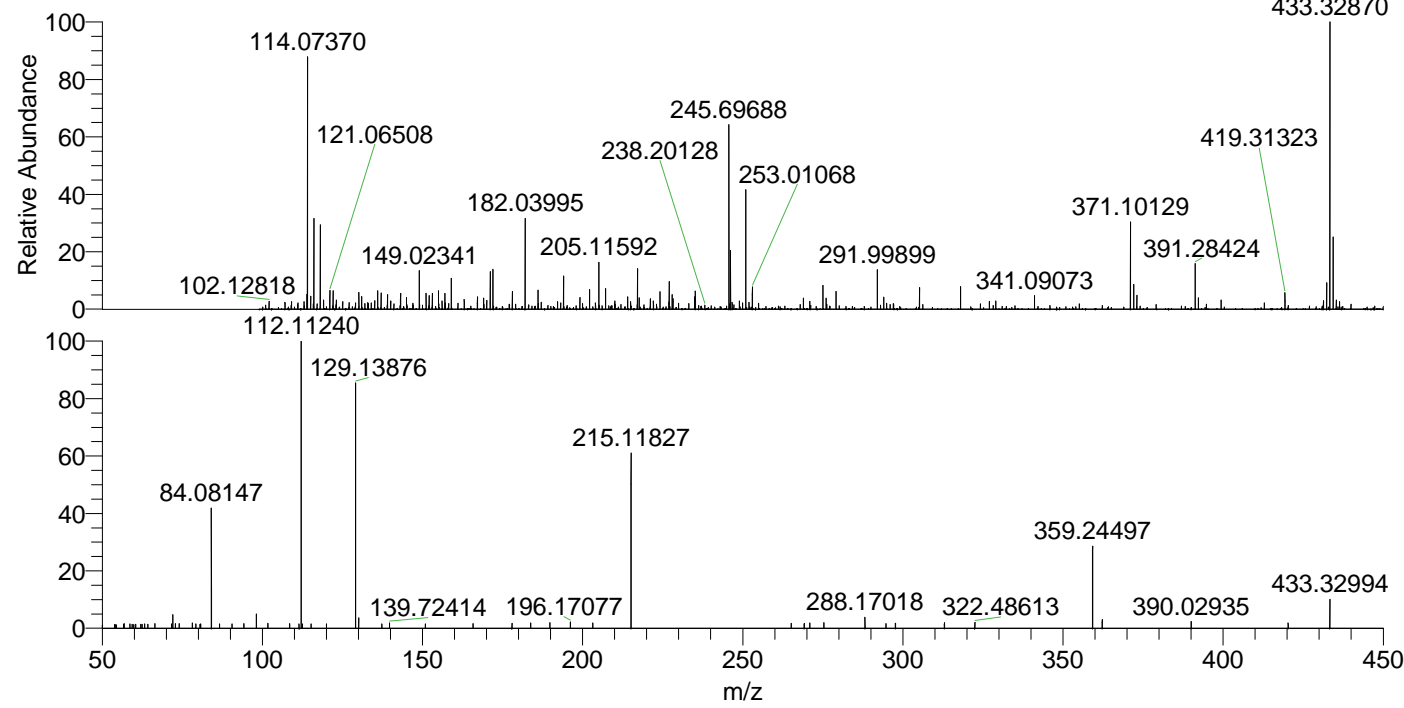
NL: 7.61E5  
 Base Peak m/z= 433.32693-433.33127 F:  
 FTMS + p ESI Full ms [100.00-1500.00]  
 MS Ariadnaap

NL: 1.10E5  
 Base Peak m/z= 217.16737-217.16955 F:  
 FTMS + p ESI Full ms [100.00-1500.00]  
 MS Ariadnaap

NL: 6.36E4  
 Base Peak m/z= 50.00000-1500.00000 F:  
 FTMS + p ESI d Full ms2  
 433.33@hcd35.00 [50.00-460.00] MS  
 Ariadnaap

Ariadnaap#3670-3694 RT: 9.24-9.30 AV:  
 F: FTMS + p ESI d Full ms2 433.33 ...  
 m/z= 50.00000-1000.00000

m/z	Intensity	Relative
56.61587	649.4	1.41
56.87788	754.2	1.63
58.68417	736.7	1.60
59.33190	638.7	1.38
60.48137	667.7	1.45
62.06676	667.3	1.45
63.23868	668.2	1.45
64.20901	634.4	1.37
66.40813	765.7	1.66
71.68560	697.6	1.51
72.08168	2195.9	4.76
72.86104	773.3	1.68
74.00343	753.7	1.63
78.10485	852.6	1.85
79.26489	667.6	1.45
80.56183	661.1	1.43
80.70268	707.0	1.53
84.08147	19866.3	43.04
86.61180	683.4	1.48
90.54975	693.2	1.50
94.26249	756.2	1.64
98.09703	2266.2	4.91
101.71927	809.1	1.75
108.51067	746.8	1.62
111.46603	697.7	1.51
112.11240	46154.6	100.00
112.49361	721.4	1.56
115.20282	709.9	1.54
120.04084	689.7	1.49
129.13876	40548.5	87.85
130.06528	1720.4	3.73
137.31317	710.9	1.54
139.72414	848.1	1.84
150.89501	718.7	1.56
165.81008	764.4	1.66
177.94627	787.7	1.71
183.77214	868.9	1.88
189.75134	916.2	1.99
196.17077	1023.2	2.22
203.15301	877.1	1.90
215.11827	28084.8	60.85
265.14781	776.0	1.68
269.19641	802.8	1.74
270.93799	856.6	1.86
275.34449	926.3	2.01
288.17018	1767.7	3.83
294.74746	762.8	1.65
297.67465	813.1	1.76
312.97391	915.2	1.98
322.48613	962.5	2.09
359.24497	13456.8	29.16
362.25418	1467.2	3.18
390.02935	1088.3	2.36
420.30566	854.7	1.85
433.32994	4735.7	10.26



NL: 7.49E5  
 Ariadnaap#3679 RT: 9.26  
 AV: 1 T: FTMS + p ESI  
 Full lock ms  
 [100.00-1500.00]

NL: 4.60E4  
 Ariadnaap#3667-3698  
 RT: 9.24-9.30 AV: 5 F:  
 FTMS + p ESI d Full ms2  
 433.33@hcd35.00  
 [50.00-460.00]

m/z	Intensity	Relative
112.11240	46154.6	100.00
112.49361	721.4	1.56
115.20282	709.9	1.54
120.04084	689.7	1.49
129.13876	40548.5	87.85
130.06528	1720.4	3.73
137.31317	710.9	1.54
139.72414	848.1	1.84
150.89501	718.7	1.56
165.81008	764.4	1.66
177.94627	787.7	1.71
183.77214	868.9	1.88
189.75134	916.2	1.99
196.17077	1023.2	2.22
203.15301	877.1	1.90
215.11827	28084.8	60.85
265.14781	776.0	1.68
269.19641	802.8	1.74
270.93799	856.6	1.86
275.34449	926.3	2.01
288.17018	1767.7	3.83
294.74746	762.8	1.65
297.67465	813.1	1.76
312.97391	915.2	1.98
322.48613	962.5	2.09
359.24497	13456.8	29.16
362.25418	1467.2	3.18
390.02935	1088.3	2.36
420.30566	854.7	1.85
433.32994	4735.7	10.26