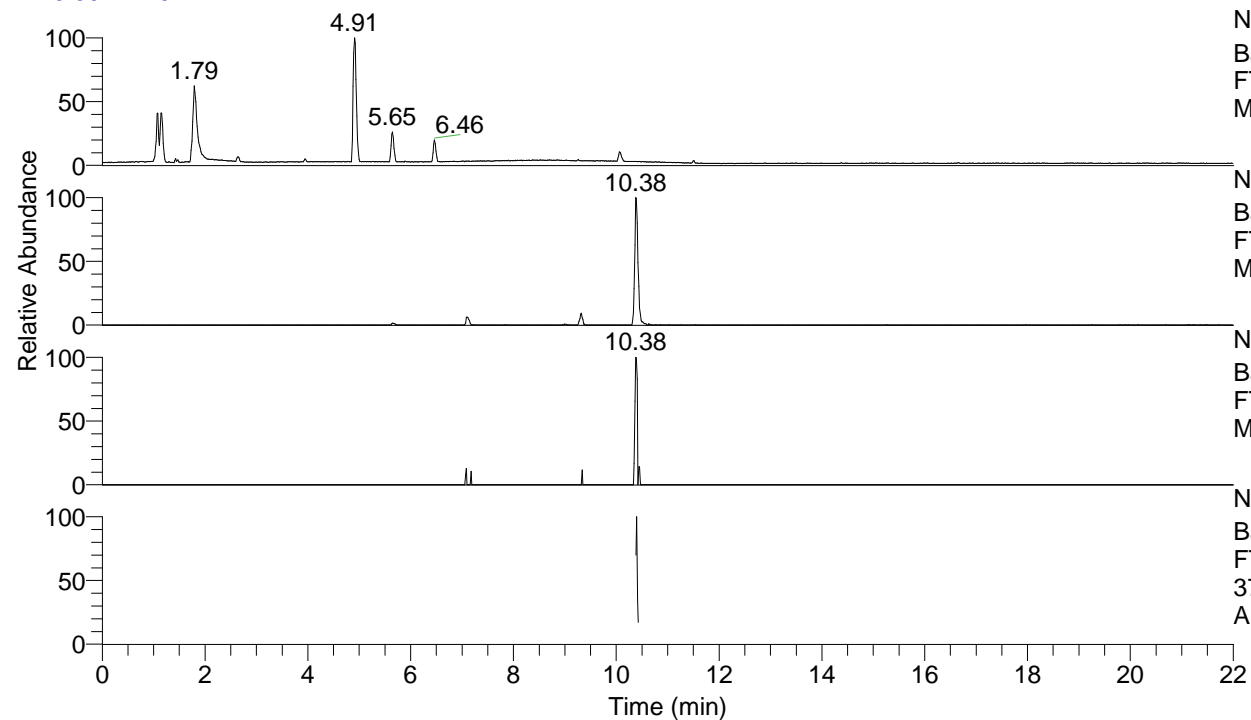


RT: 0.00 - 22.01



NL: 1.75E7
 Base Peak m/z= 100.00000-1500.00000 F:
 FTMS + p ESI Full ms [100.00-1500.00]
 MS Ariadnaap

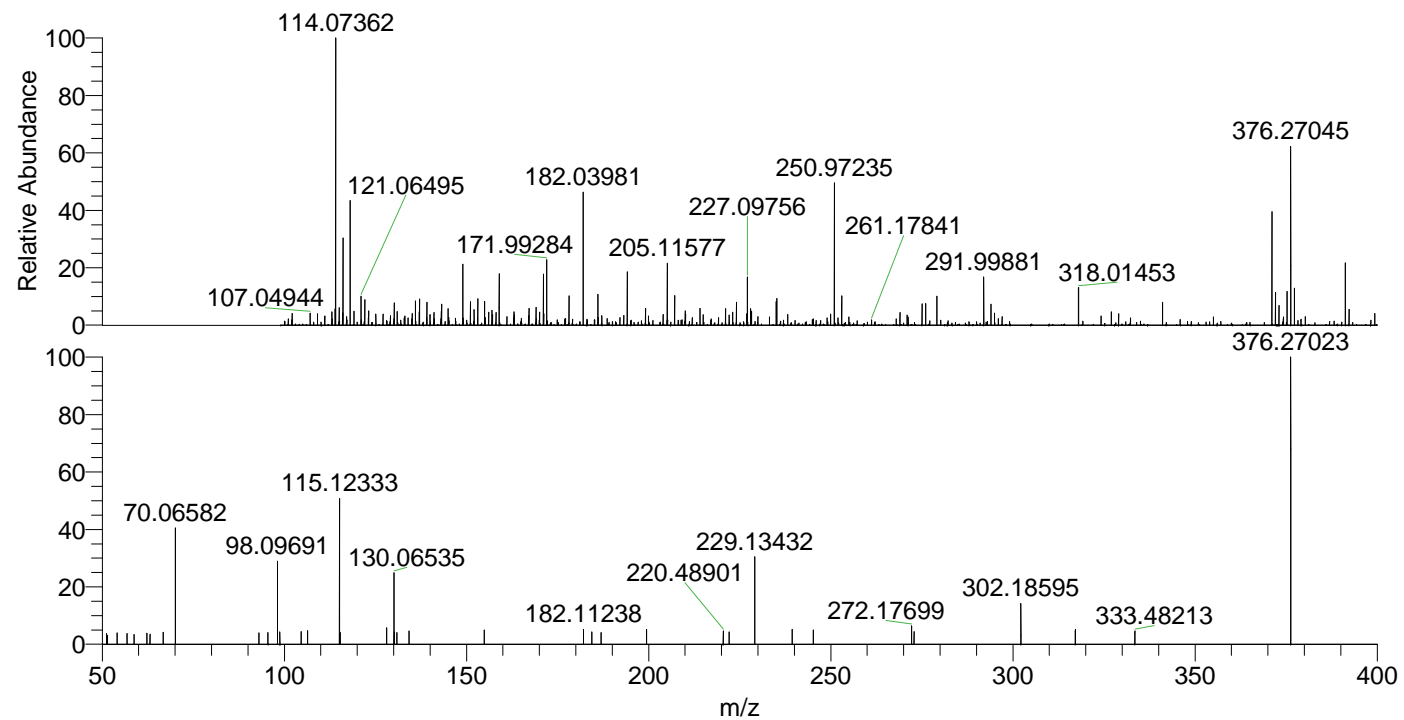
NL: 3.45E5
 Base Peak m/z= 376.26937-376.27313 F:
 FTMS + p ESI Full ms [100.00-1500.00]
 MS Ariadnaap

NL: 1.21E4
 Base Peak m/z= 188.63860-188.64048 F:
 FTMS + p ESI Full ms [100.00-1500.00]
 MS Ariadnaap

NL: 4.37E4
 Base Peak m/z= 50.00000-1500.00000 F:
 FTMS + p ESI d Full ms2
 376.27@hcd35.00 [50.00-400.00] MS
 Ariadnaap

Ariadnaap#4126-4137 RT: 10.39-10.41
 F: FTMS + p ESI d Full ms2 376.27 ...
 m/z= 50.00000-1000.00000

m/z	Intensity	Relative
51.16593	988.0	3.60
51.44809	842.8	3.07
54.11155	1085.8	3.96
56.80874	990.4	3.61
58.71927	909.5	3.31
62.24291	1012.6	3.69
63.09570	913.0	3.33
66.77037	1095.4	3.99
70.06582	11055.6	40.30
93.00085	1052.6	3.84
95.51476	1063.2	3.88
98.09691	7614.2	27.75
98.76723	1157.5	4.22
104.59491	1170.1	4.26
106.39960	1268.5	4.62
115.12333	13443.6	49.00
115.36487	1082.6	3.95
128.10679	1517.3	5.53
130.06535	6576.6	23.97
130.20735	1157.6	4.22
130.88950	1091.3	3.98
134.25434	1230.4	4.48
154.90665	1338.3	4.88
182.11238	1409.9	5.14
184.43323	1178.8	4.30
186.94409	1092.9	3.98
199.45102	1397.0	5.09
220.48901	1223.4	4.46
222.08137	1152.5	4.20
229.13432	8053.5	29.35
239.41908	1376.6	5.02
245.21606	1317.8	4.80
272.17699	1703.7	6.21
272.87378	1181.3	4.31
302.18595	3807.1	13.88
317.13938	1362.6	4.97
333.48213	1237.3	4.51
376.27023	27436.3	100.00



NL: 5.25E5
 Ariadnaap#4123 RT:
 10.38 AV: 1 T: FTMS + p
 ESI Full lock ms
 [100.00-1500.00]

NL: 2.63E4
 Ariadnaap#4124-4140 RT:
 10.39-10.41 AV: 3 F:
 FTMS + p ESI d Full ms2
 376.27@hcd35.00
 [50.00-400.00]