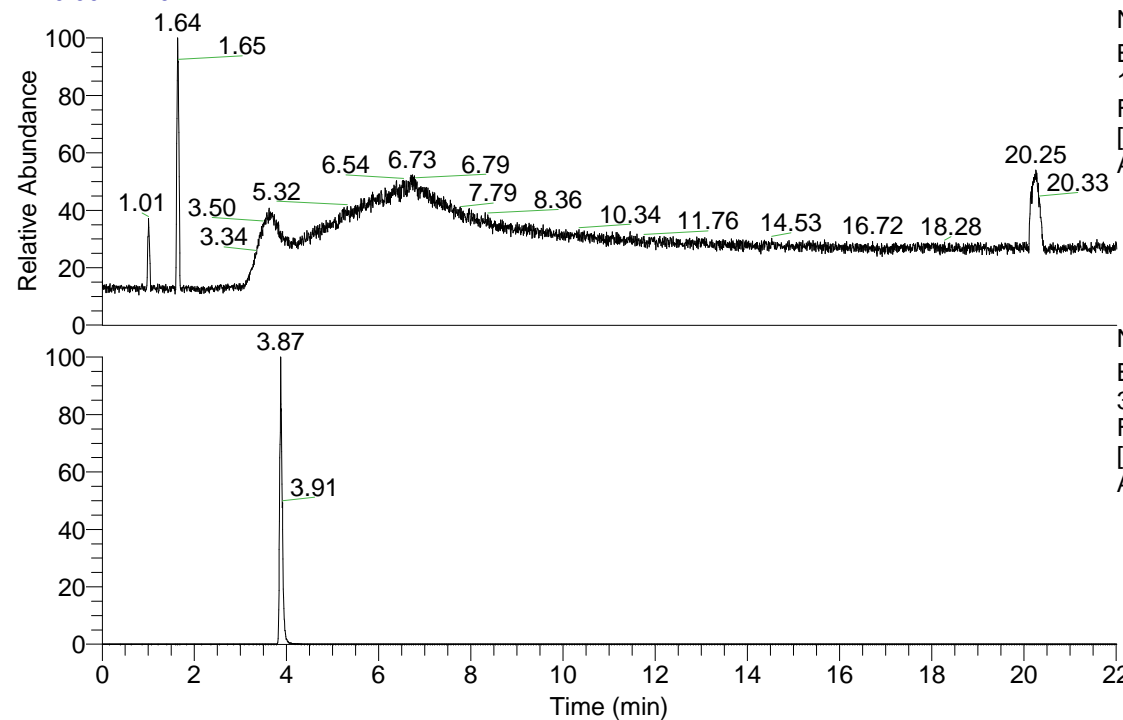


RT: 0.00 - 22.01

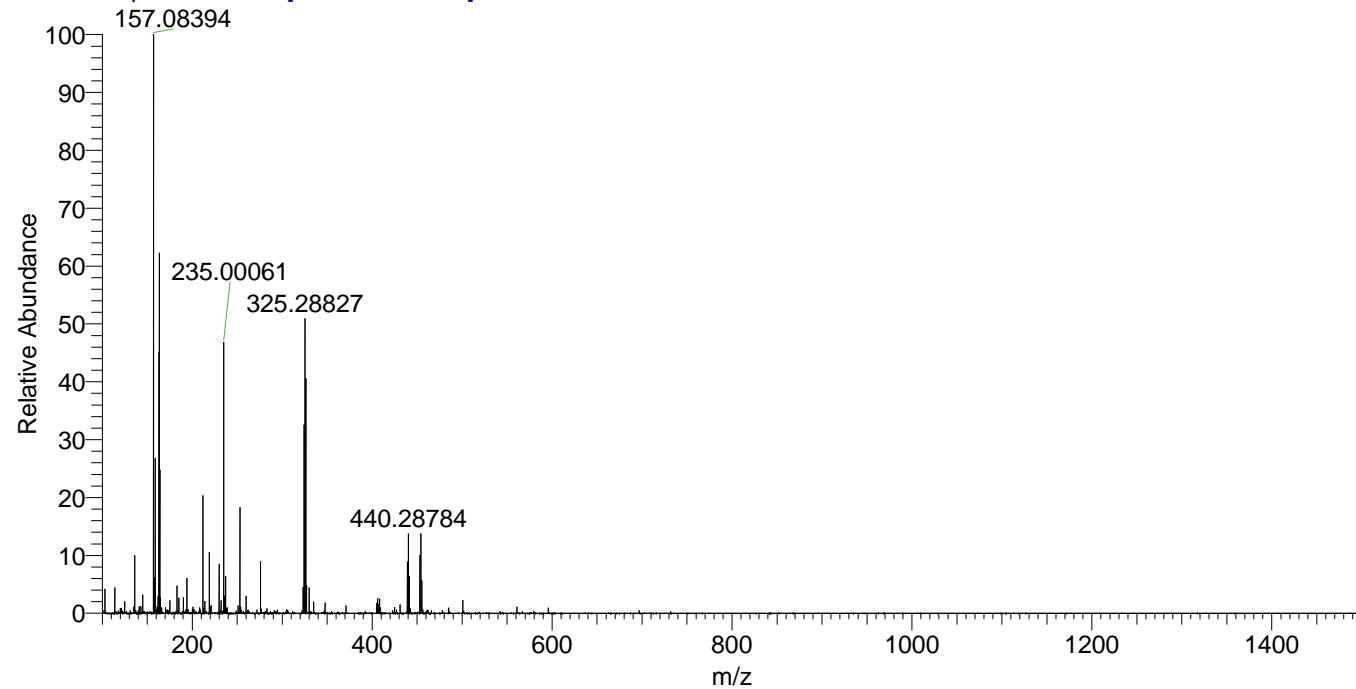


NL: 6.19E7
 Base Peak m/z= 100.00000-1500.00000
 F: FTMS + p ESI Full ms [100.00-1500.00] MS
 Ariadnasp_HDX

Ariadnasp_HDX#589 RT: 3.87
 T: FTMS + p ESI Full ms [100.00-1500.00]
 m/z= 324.00000-325.00000

m/z	Intensity	Relative	Delta (ppm)	Composition
324.28220	6891387.5	100.00	1.72	C ₁₂ H ₁₈ ² H ₉ O ₂ N ₈
			-3.06	C ₁₂ H ₂₀ ² H ₈ O ₂ N ₈

Ariadnasp_HDX #589 RT: 3.87 AV: 1 NL: 2.01E7
 T: FTMS + p ESI Full ms [100.00-1500.00]



Ariadnasp_HDX #589 RT: 3.87 AV: 1 NL: 1.03E7
 T: FTMS + p ESI Full ms [100.00-1500.00]

