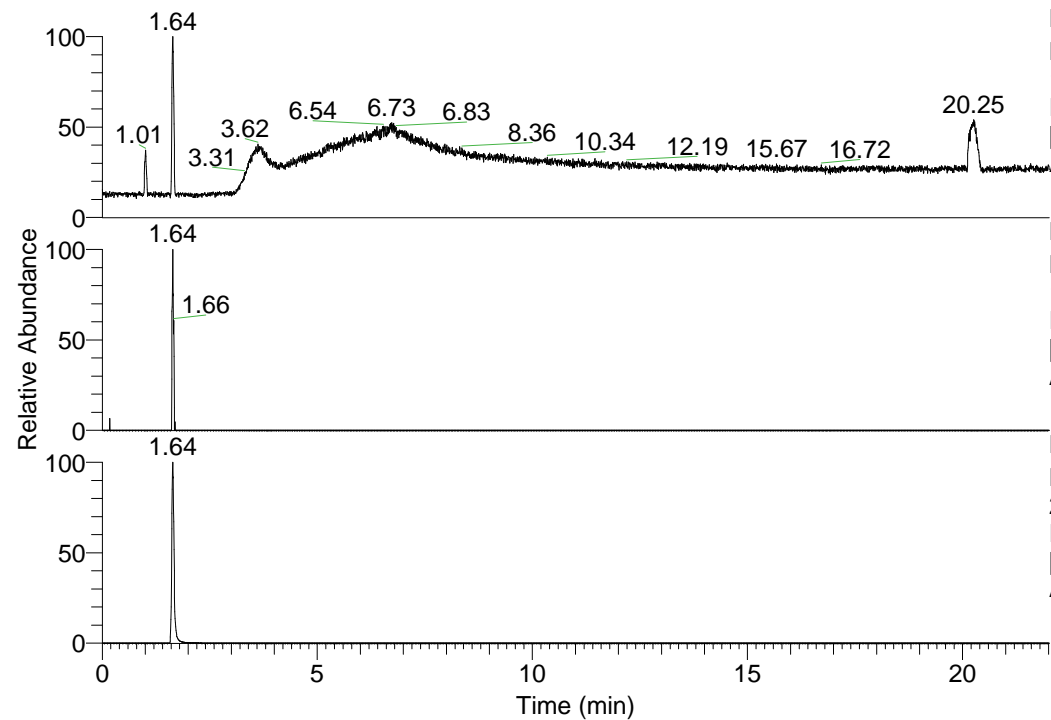


RT: 0.00 - 22.01



NL: 6.19E7
 Base Peak m/z=
 100.00000-1500.00000 F:
 FTMS + p ESI Full ms
 [100.00-1500.00] MS
 Ariadnasp_HDX

Ariadnasp_HDX#246 RT: 1.64

T: FTMS + p ESI Full ms [100.00-1500.00]

m/z= 219.00000-220.00000

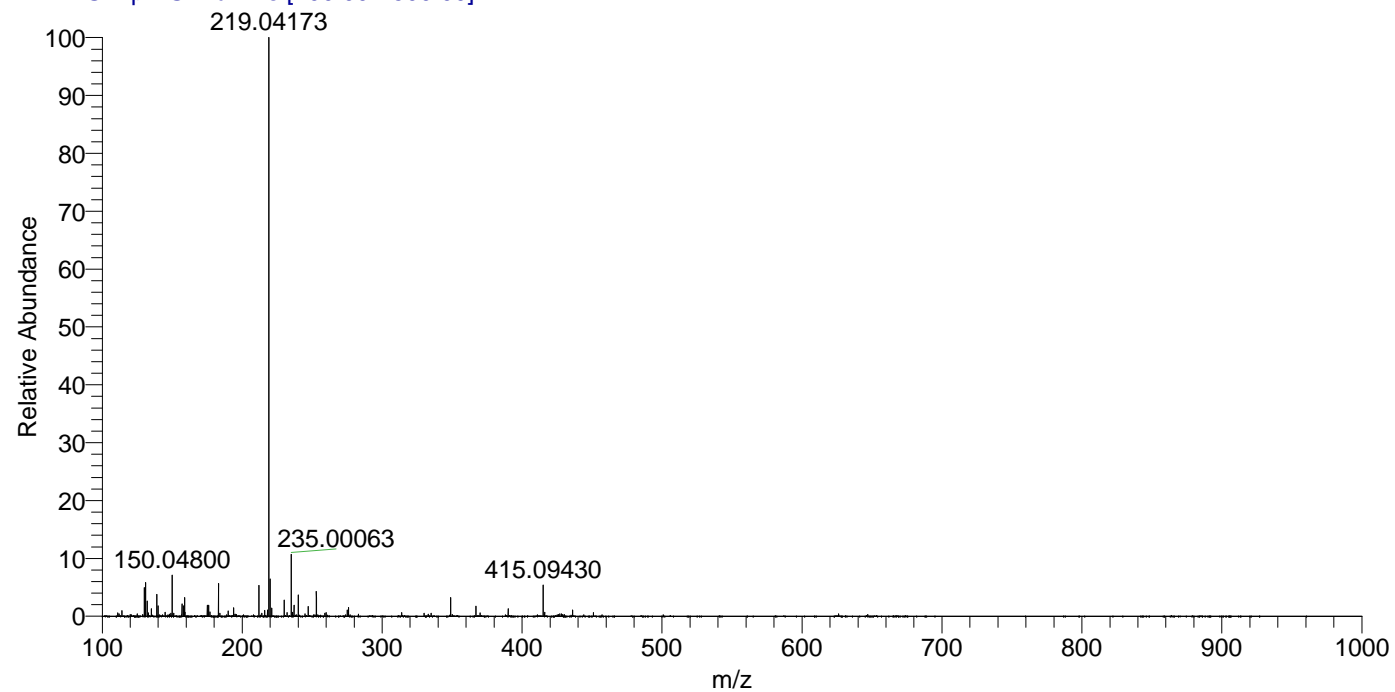
m/z	Intensity	Relative	Delta (ppm)	Composition
219.04173	61906896.0	100.00	1.84	C ₆ H ₄ ² H ₄ O ₇ Na

NL: 3.83E4
 Base Peak m/z=
 198.06522-198.06720 F:
 FTMS + p ESI Full ms
 [100.00-1500.00] MS
 Ariadnasp_HDX

NL: 6.19E7
 Base Peak m/z=
 219.04078-219.04298 F:
 FTMS + p ESI Full ms
 [100.00-1500.00] MS
 Ariadnasp_HDX

Ariadnasp_HDX #246 RT: 1.64 AV: 1 NL: 6.17E7

T: FTMS + p ESI Full ms [100.00-1500.00]



Ariadnasp_HDX #246 RT: 1.64 AV: 1 NL: 6.17E7

T: FTMS + p ESI Full ms [100.00-1500.00]

