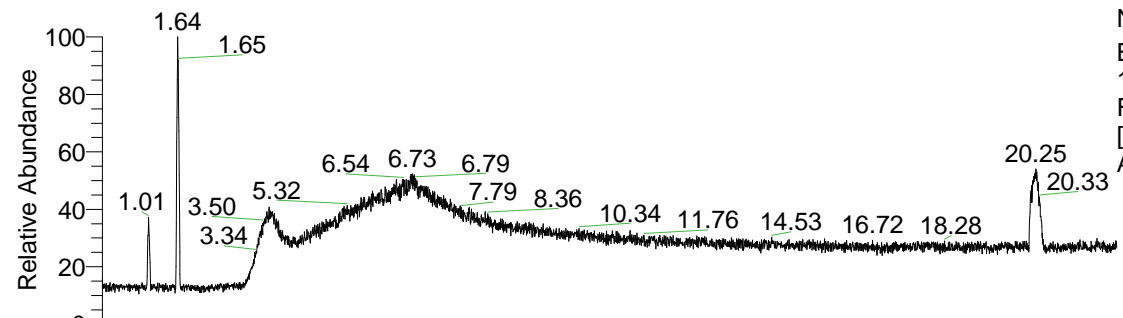


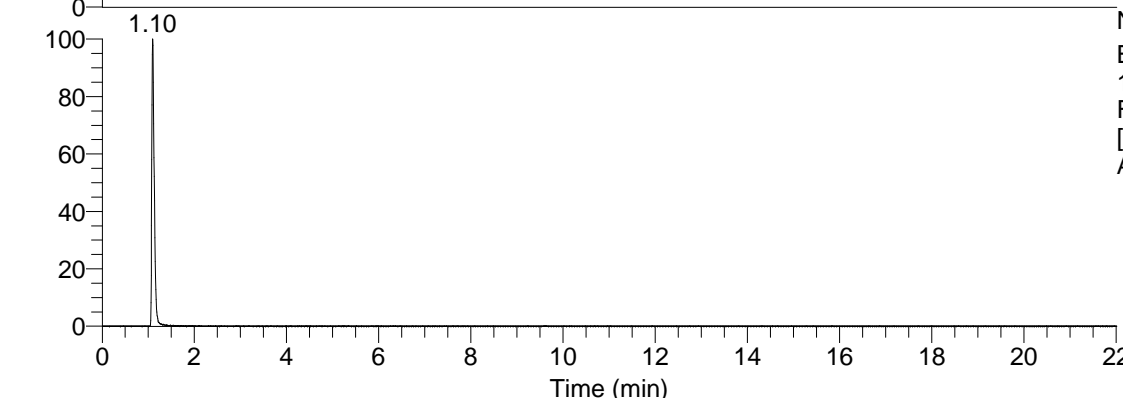
RT: 0.00 - 22.01



NL: 6.19E7
 Base Peak m/z= 100.00000-1500.00000
 F: FTMS + p ESI Full ms [100.00-1500.00] MS
 Ariadnasp_HDX

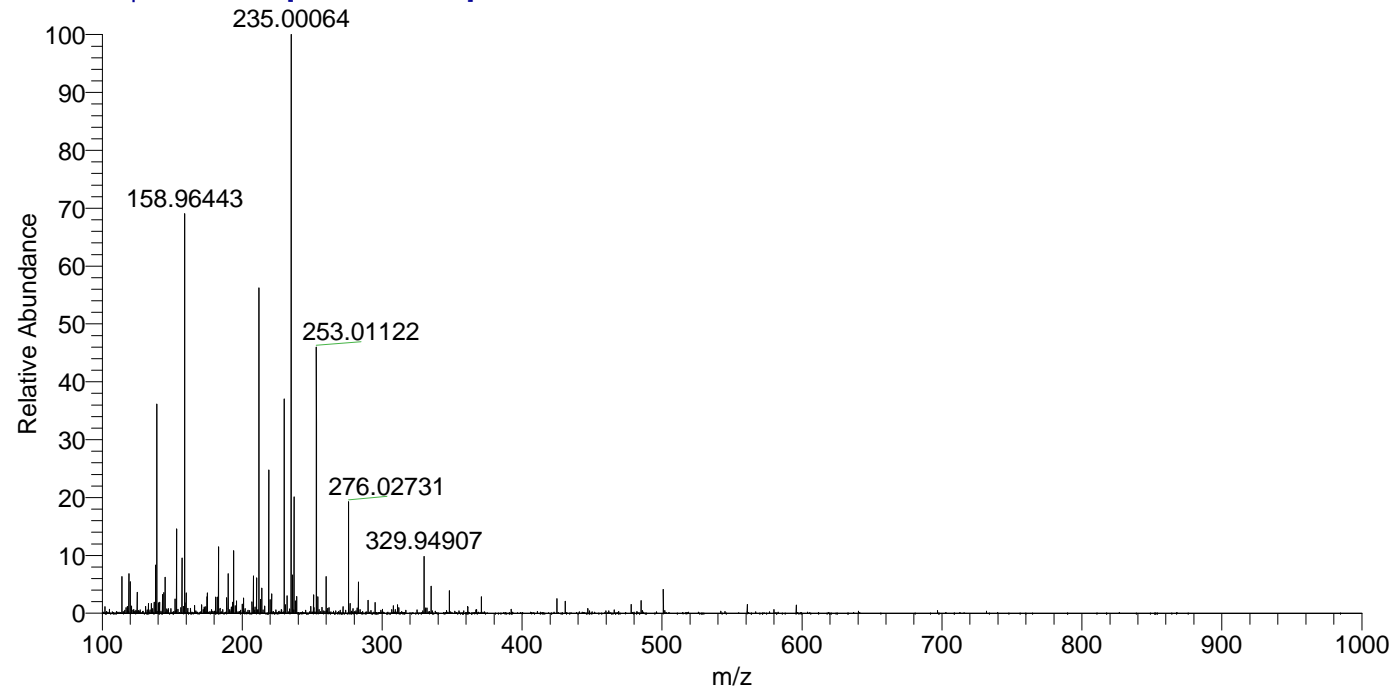
Ariadnasp_HDX#165 RT: 1.10
 T: FTMS + p ESI Full ms [100.00-1500.00]
 m/z= 139.00000-140.00000

m/z	Intensity	Relative	Delta (ppm)	Composition
139.07654	2880343.8	100.00	2.66	C ₄ H ₃ ² H ₅ O ₄ N



NL: 2.94E6
 Base Peak m/z= 139.07602-139.07742 F:
 FTMS + p ESI Full ms [100.00-1500.00] MS
 Ariadnasp_HDX

Ariadnasp_HDX #165 RT: 1.10 AV: 1 NL: 7.79E6
 T: FTMS + p ESI Full ms [100.00-1500.00]



Ariadnasp_HDX #165 RT: 1.10 AV: 1 NL: 2.82E6
 T: FTMS + p ESI Full ms [100.00-1500.00]

