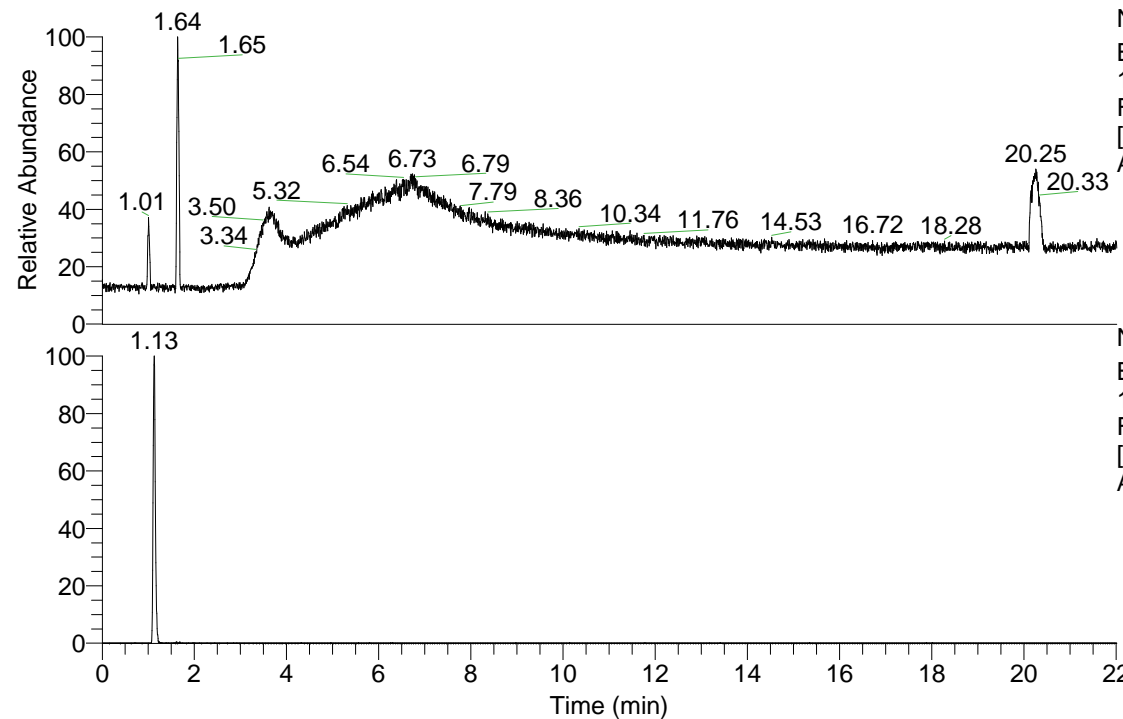


RT: 0.00 - 22.01

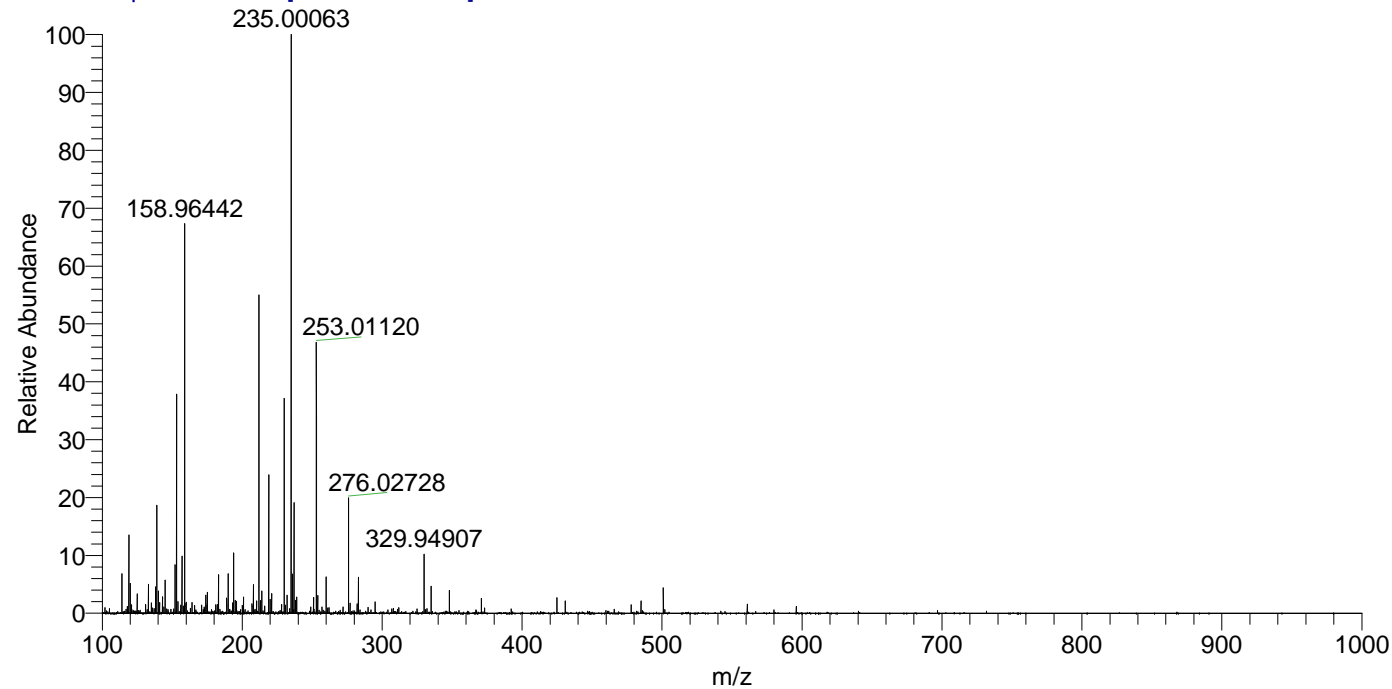


NL: 6.19E7  
 Base Peak m/z= 100.00000-1500.00000  
 F: FTMS + p ESI Full ms [100.00-1500.00] MS  
 Ariadnasp\_HDX

Ariadnasp\_HDX#169 RT: 1.13  
 T: FTMS + p ESI Full ms [100.00-1500.00]  
 m/z= 119.00000-120.00000

m/z	Intensity	Relative	Delta (ppm)	Composition
119.09308	1090044.1	100.00	4.59	C <sub>5</sub> H <sub>11</sub> <sup>2</sup> H O <sub>2</sub> N

Ariadnasp\_HDX #169 RT: 1.13 AV: 1 NL: 8.04E6  
 T: FTMS + p ESI Full ms [100.00-1500.00]



NL: 1.09E6  
 Base Peak m/z= 119.09248-119.09368 F:  
 FTMS + p ESI Full ms [100.00-1500.00] MS  
 Ariadnasp\_HDX

Ariadnasp\_HDX #169 RT: 1.13 AV: 1 NL: 1.09E6  
 T: FTMS + p ESI Full ms [100.00-1500.00]

