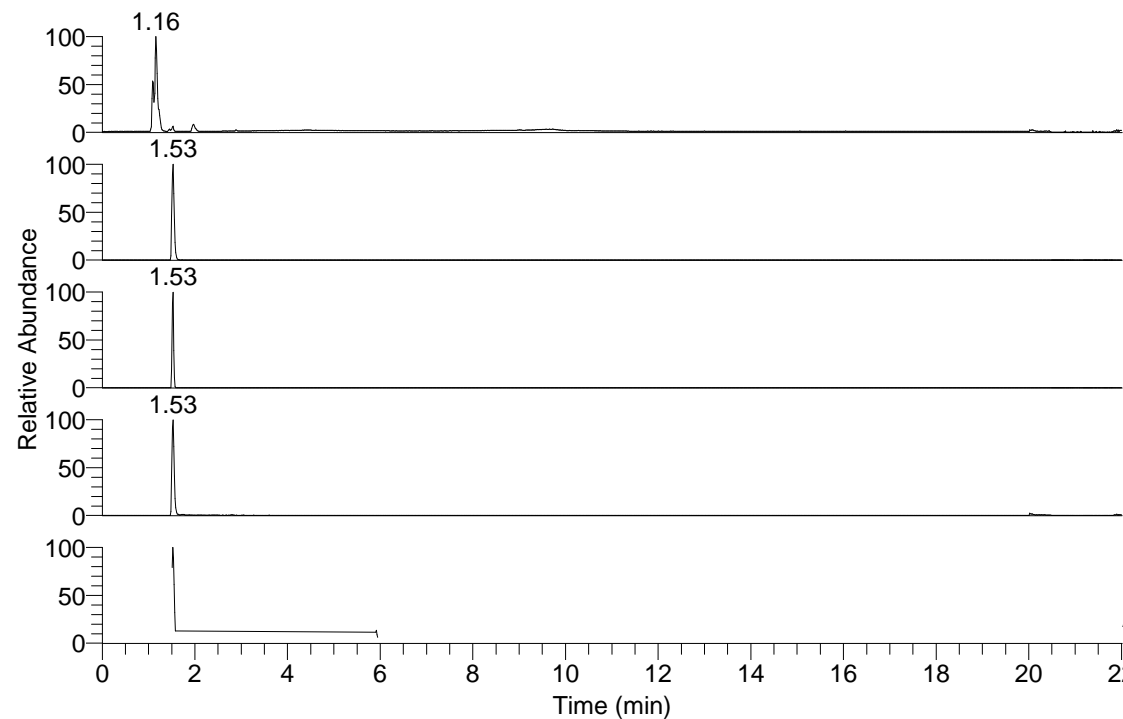


RT: 0.00 - 22.01



NL: 5.27E7  
Base Peak m/z= 50.00000-1500.00000 F: FTMS + p  
ESI Full ms [100.00-1500.00] MS Alopecosp5

NL: 2.13E6  
Base Peak m/z= 244.09213-244.09457 F: FTMS + p  
ESI Full ms [100.00-1500.00] MS Alopecosp5

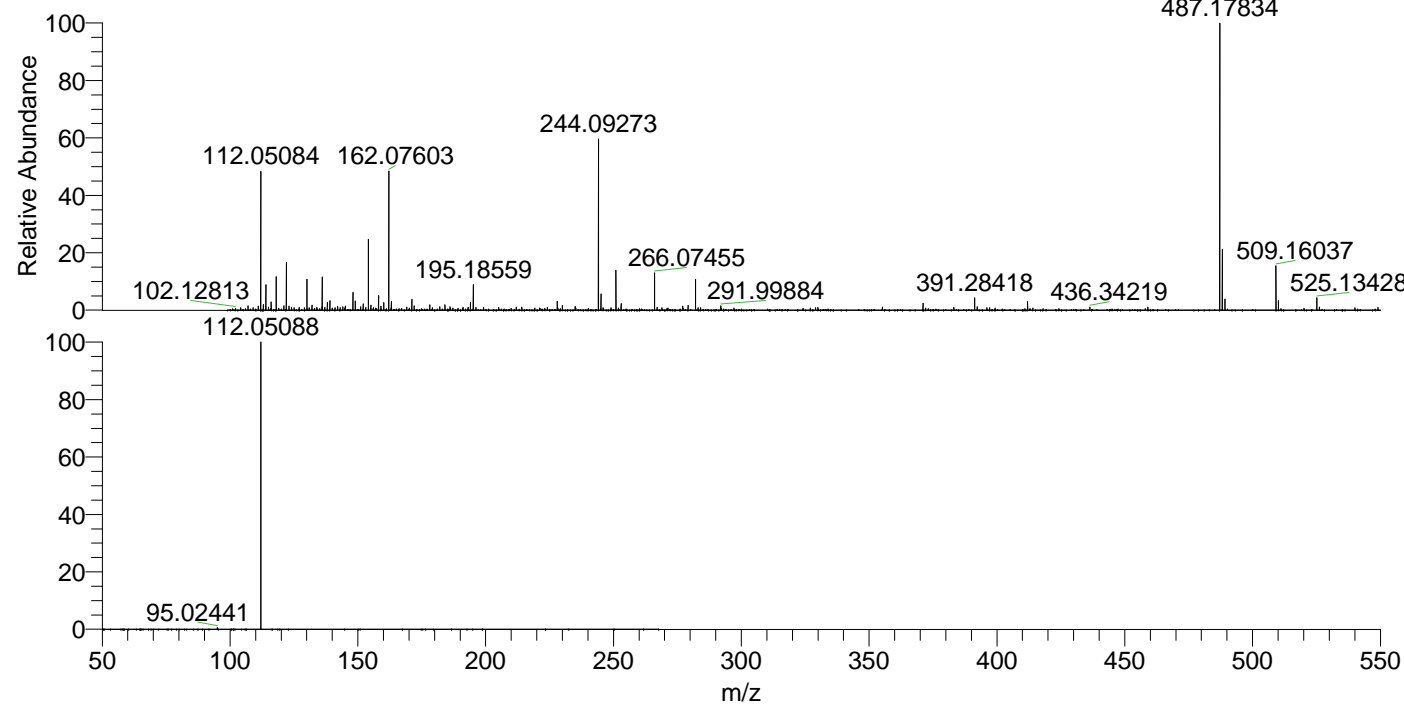
NL: 3.51E6  
Base Peak m/z= 487.17643-487.18131 F: FTMS + p  
ESI Full ms [100.00-1500.00] MS Alopecosp5

NL: 1.67E6  
Base Peak m/z= 112.05053-112.05165 F: FTMS + p  
ESI Full ms [100.00-1500.00] MS Alopecosp5

NL: 1.80E6  
Base Peak m/z= 50.00000-1500.00000 F: FTMS + p  
ESI d Full ms2 244.09@hcd35.00 [50.00-265.00] MS  
Alopecosp5

Alopecosp5#604-632 RT: 1.51-1.58 AV: 6  
F: FTMS + p ESI d Full ms2 244.09@h ...  
m/z= 50.00000-1000.00000

m/z	Intensity	Relative
95.02441	6113.0	0.57
112.05088	1077237.0	100.00



NL: 3.37E6  
Alopecosp5#613 RT:  
1.53 AV: 1 T: FTMS + p  
ESI Full lock ms  
[100.00-1500.00]

NL: 1.04E6  
Alopecosp5#566-656  
RT: 1.51-1.58 AV: 6 F:  
FTMS + p ESI d Full ms2  
244.09@hcd35.00  
[50.00-265.00]