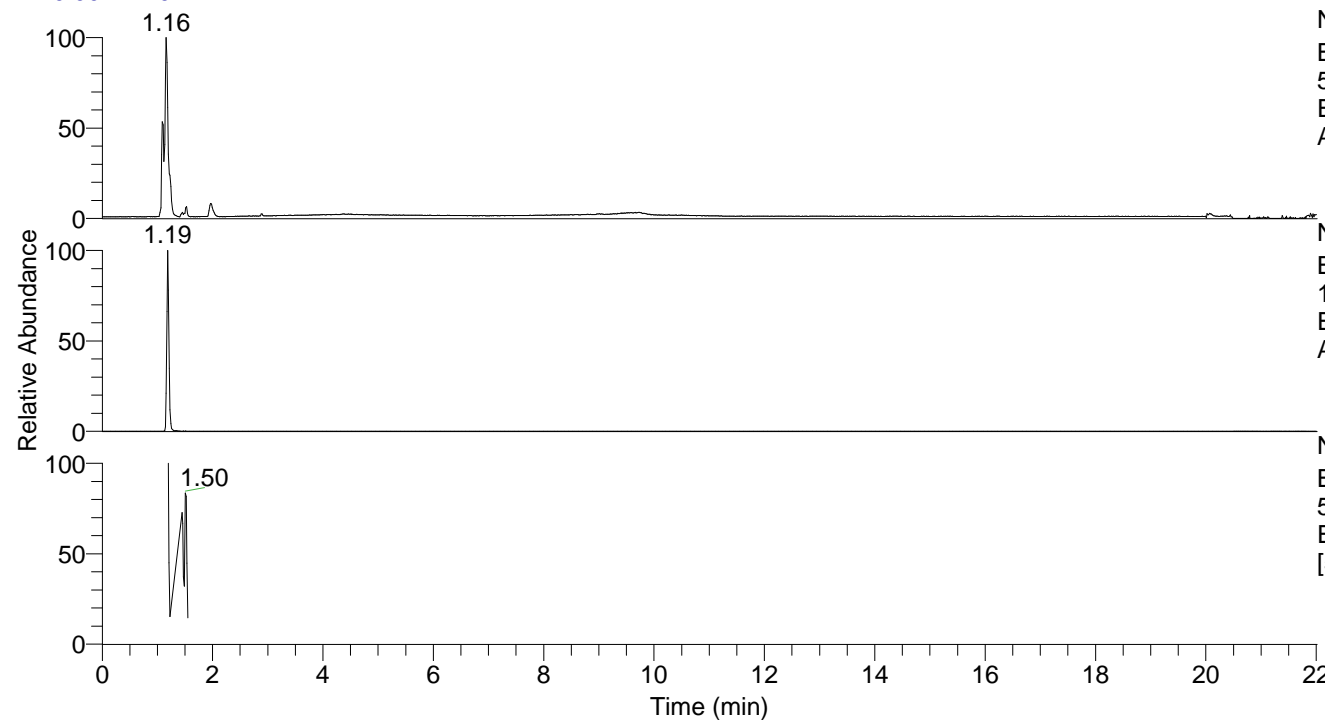


RT: 0.00 - 22.01



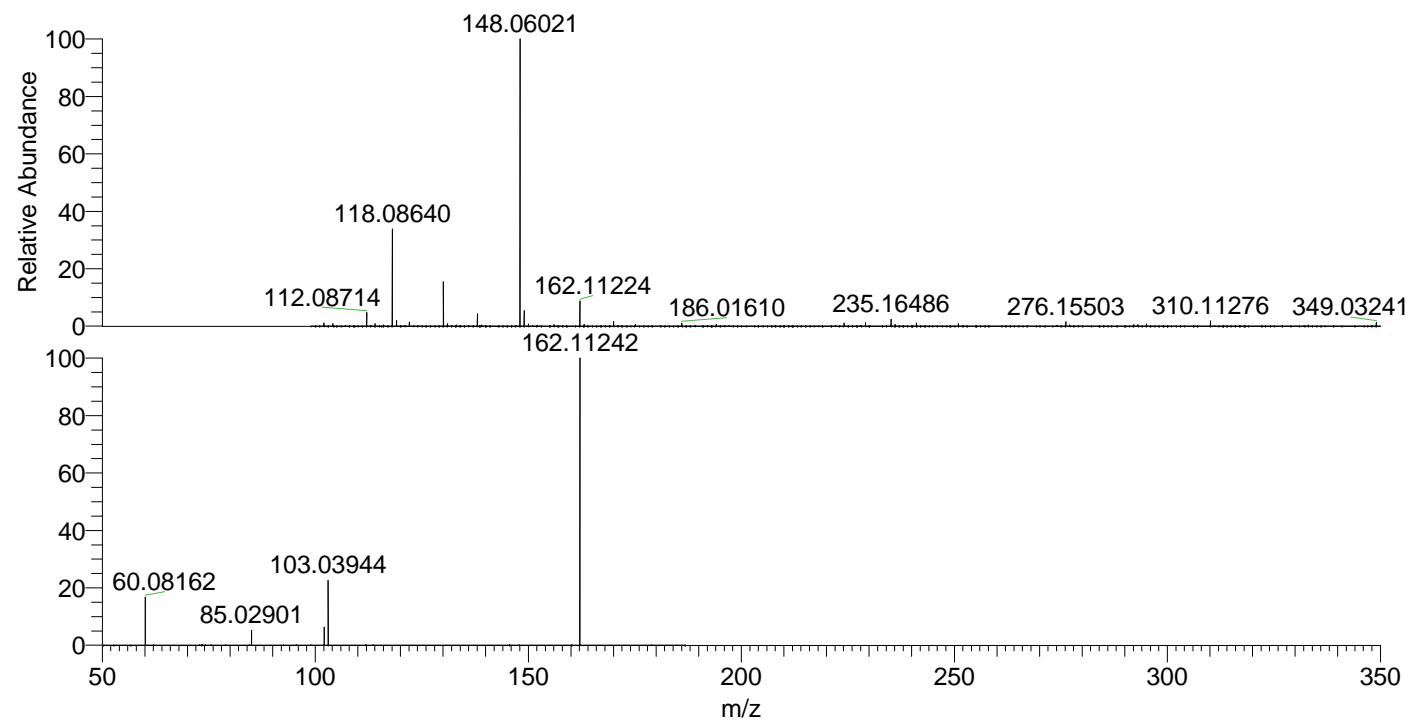
NL: 5.27E7  
Base Peak m/z=  
50.00000-1500.00000 F: FTMS + p  
ESI Full ms [100.00-1500.00] MS  
Alopecosp5

NL: 2.95E6  
Base Peak m/z=  
162.11140-162.11464 F: FTMS + p  
ESI Full ms [100.00-1500.00] MS  
Alopecosp5

NL: 1.29E6  
Base Peak m/z=  
50.00000-1500.00000 F: FTMS + p  
ESI d Full ms2 162.08@hcd35.00  
[50.00-185.00] MS Alopecosp5

Alopecosp5#479-492 RT: 1.20-1.23  
F: FTMS + p ESI d Full ms2 162.08 ...  
m/z= 50.00000-1000.00000

m/z	Intensity	Relative
60.08162	105511.8	16.46
85.02901	32436.6	5.06
102.09178	39463.8	6.15
103.03944	144197.0	22.49
162.11242	641209.1	100.00



NL: 3.22E7  
Alopecosp5#475 RT:  
1.19 AV: 1 T: FTMS + p  
ESI Full ms  
[100.00-1500.00]

NL: 6.19E5  
Alopecosp5#478-493  
RT: 1.20-1.23 AV: 3 F:  
FTMS + p ESI d Full ms2  
162.08@hcd35.00  
[50.00-185.00]