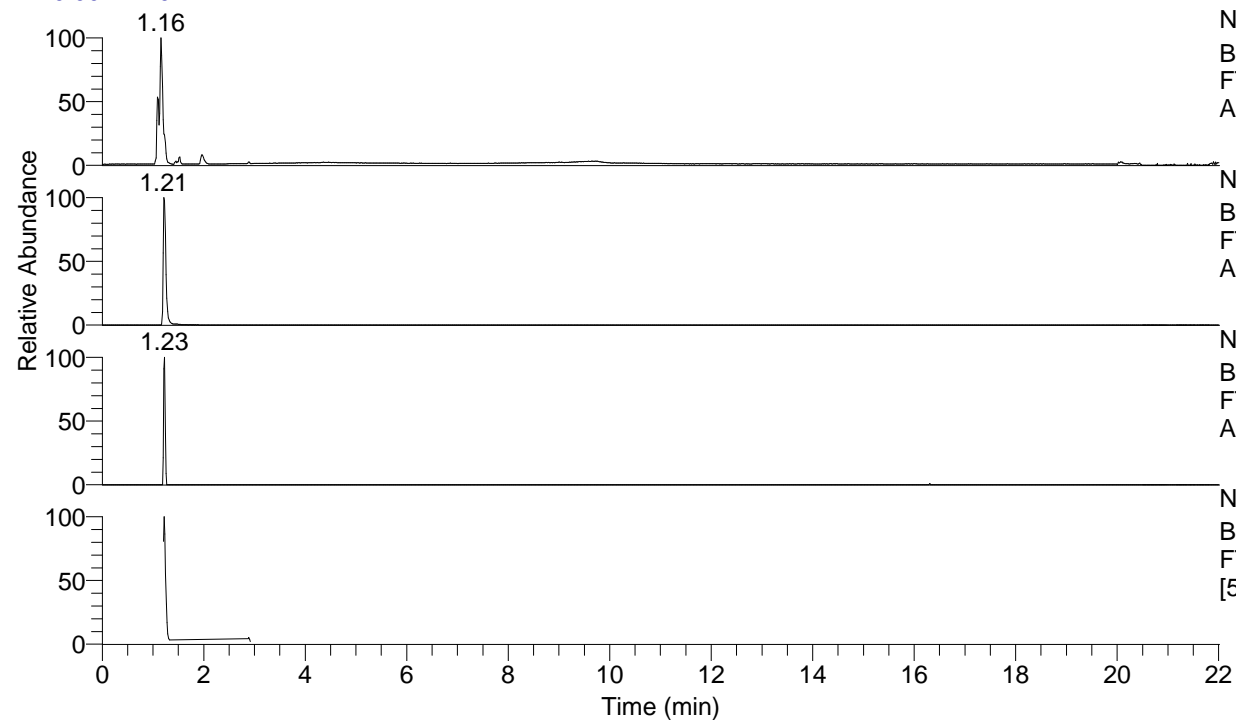


RT: 0.00 - 22.01



NL: 5.27E7
Base Peak m/z= 50.00000-1500.00000 F:
FTMS + p ESI Full ms [100.00-1500.00] MS
Alopecosasp5

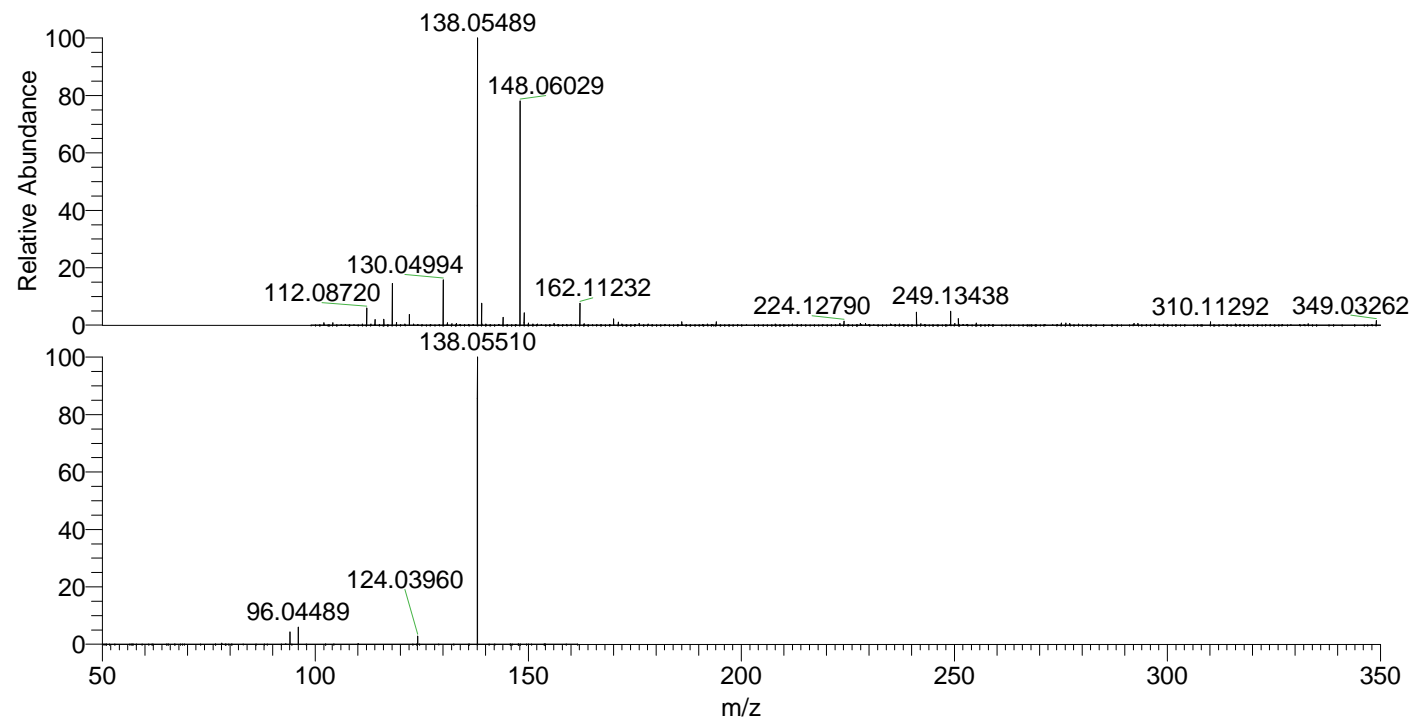
NL: 1.30E7
Base Peak m/z= 138.05481-138.05619 F:
FTMS + p ESI Full ms [100.00-1500.00] MS
Alopecosasp5

NL: 1.09E5
Base Peak m/z= 275.10180-275.10456 F:
FTMS + p ESI Full ms [100.00-1500.00] MS
Alopecosasp5

NL: 1.02E7
Base Peak m/z= 50.00000-1500.00000 F:
FTMS + p ESI d Full ms2 138.05@hcd35.00
[50.00-160.00] MS Alopecosasp5

Alopecosasp5#484-512 RT: 1.21-1.28 AV: 6
F: FTMS + p ESI d Full ms2 138.05@h ...
m/z= 50.00000-1000.00000

m/z	Intensity	Relative
94.06567	258883.6	4.33
96.04489	357992.5	5.98
124.03960	167981.2	2.81
138.05511	5984948.5	100.00



NL: 1.29E7
Alopecosasp5#487 RT:
1.21 AV: 1 T: FTMS + p
ESI Full lock ms
[100.00-1500.00]

NL: 4.15E6
Alopecosasp5#450-537
RT: 1.21-1.32 AV: 9 F:
FTMS + p ESI d Full ms2
138.05@hcd35.00
[50.00-160.00]