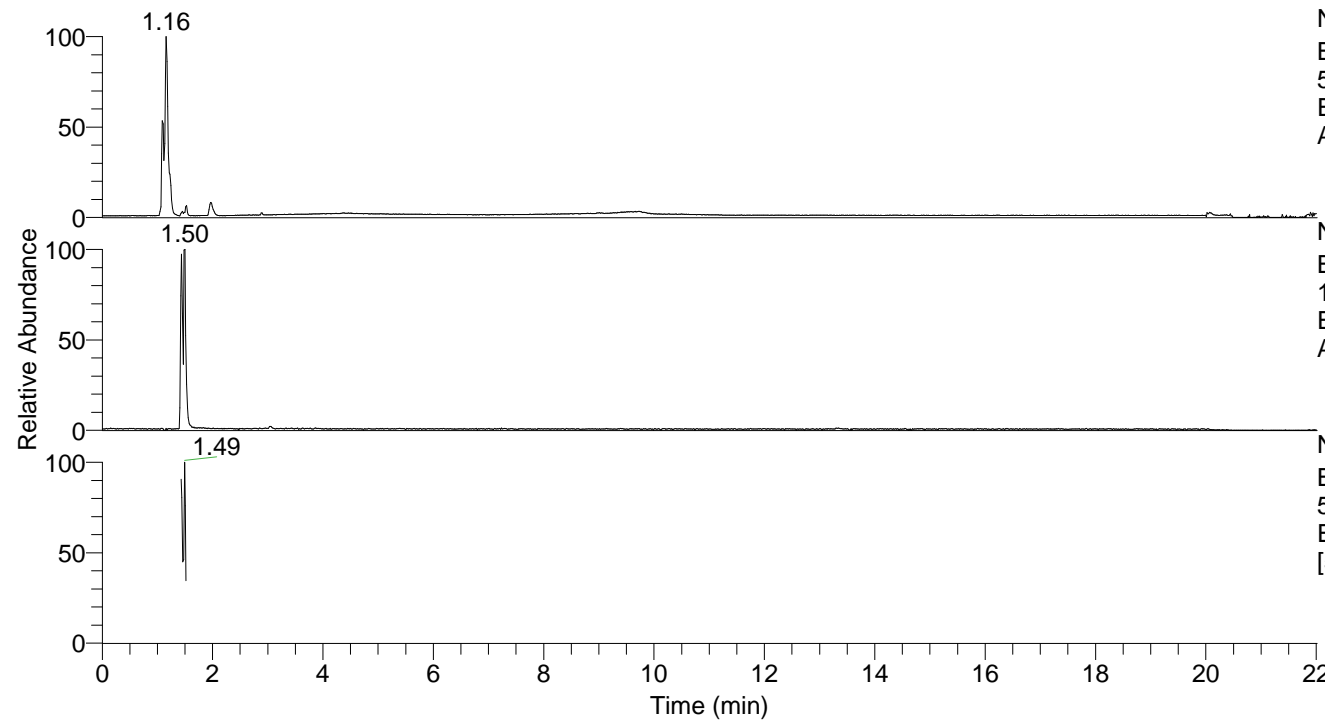


RT: 0.00 - 22.01



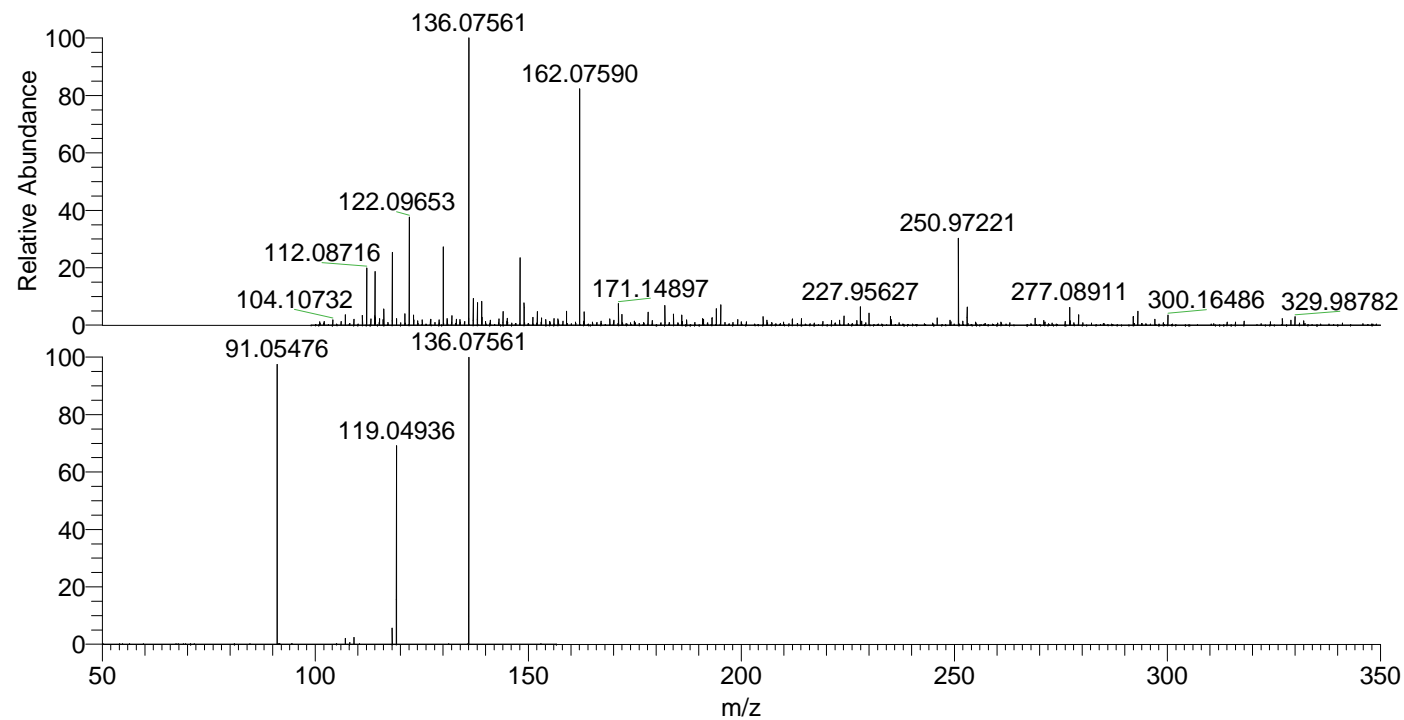
NL: 5.27E7
Base Peak m/z=
50.00000-1500.00000 F: FTMS + p
ESI Full ms [100.00-1500.00] MS
Alopecosasp5

NL: 1.51E6
Base Peak m/z=
136.07555-136.07691 F: FTMS + p
ESI Full ms [100.00-1500.00] MS
Alopecosasp5

NL: 5.84E5
Base Peak m/z=
50.00000-1500.00000 F: FTMS + p
ESI d Full ms2 136.08@hcd35.00
[50.00-155.00] MS Alopecosasp5

Alopecosasp5#574-584 RT: 1.43-1.46
F: FTMS + p ESI d Full ms2 136.08 ...
m/z= 50.00000-1000.00000

m/z	Intensity	Relative
91.05476	388568.5	100.00
107.04946	8307.0	2.14
108.08120	2531.8	0.65
109.06502	9552.6	2.46
118.06529	22149.6	5.70
119.04936	269187.2	69.28
136.02144	38336.6	9.87
136.07561	388556.2	100.00



NL: 1.46E6
Alopecosasp5#577 RT:
1.44 AV: 1 T: FTMS + p
ESI Full lock ms
[100.00-1500.00]

NL: 3.88E5
Alopecosasp5#571-586
RT: 1.43-1.46 AV: 3 F:
FTMS + p ESI d Full ms2
136.08@hcd35.00
[50.00-155.00]