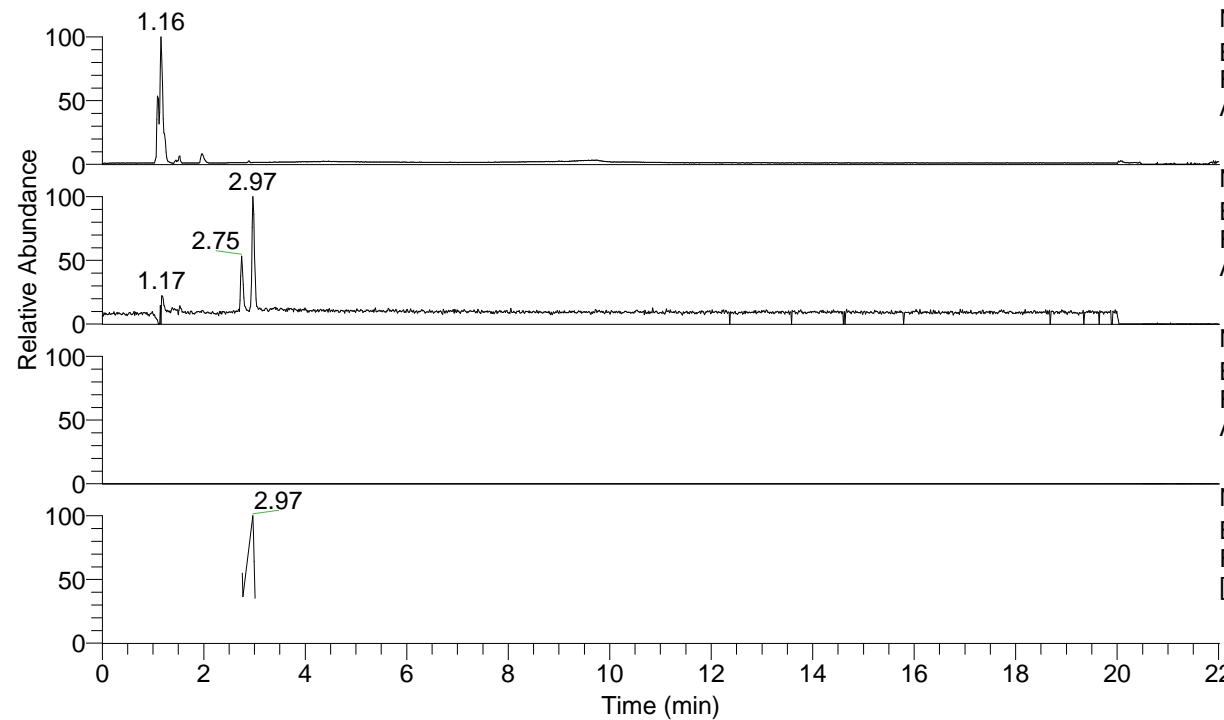


RT: 0.00 - 22.01



NL: 5.27E7
 Base Peak m/z= 50.00000-1500.00000 F:
 FTMS + p ESI Full ms [100.00-1500.00] MS
 Alopecosasp5

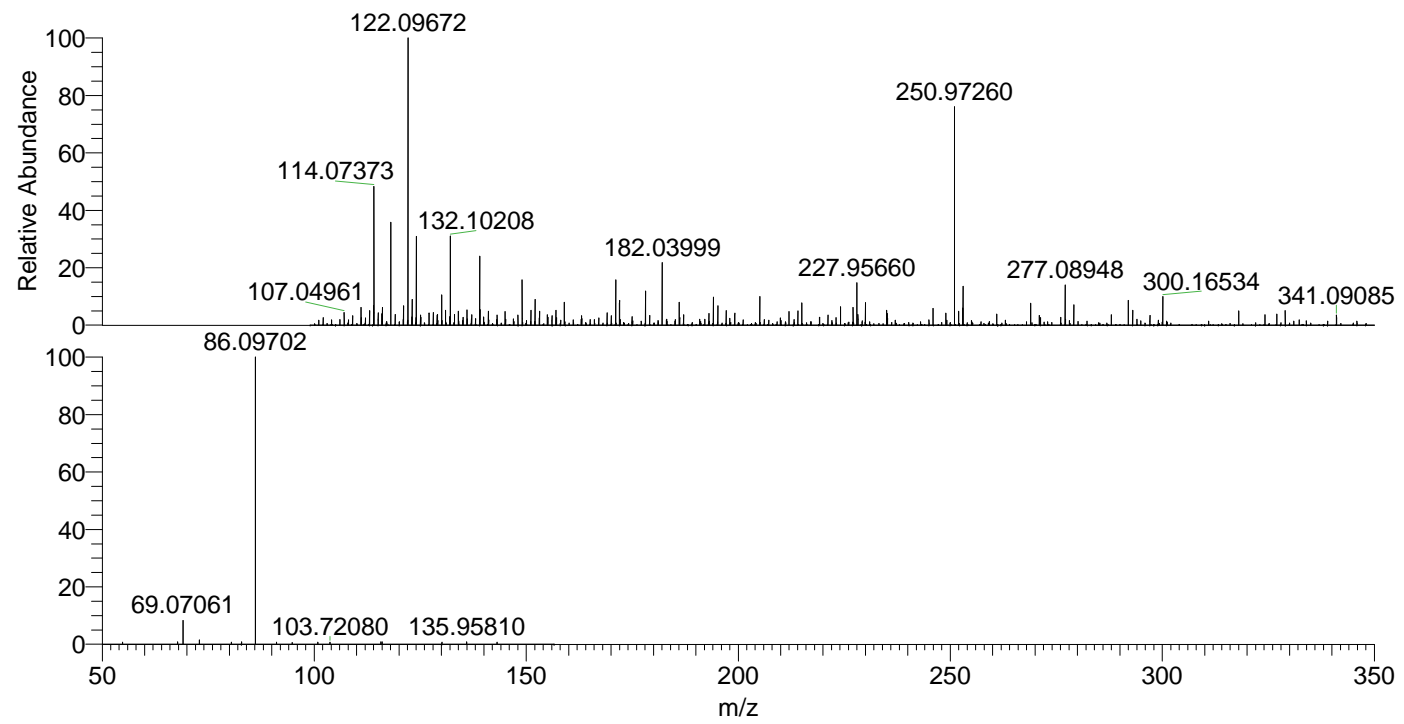
NL: 4.31E5
 Base Peak m/z= 132.10179-132.10311 F:
 FTMS + p ESI Full ms [100.00-1500.00] MS
 Alopecosasp5

NL: 0
 Base Peak m/z= 263.19576-263.19840 F:
 FTMS + p ESI Full ms [100.00-1500.00] MS
 Alopecosasp5

NL: 3.38E5
 Base Peak m/z= 50.00000-1500.00000 F:
 FTMS + p ESI d Full ms2 132.10@hcd35.00
 [50.00-155.00] MS Alopecosasp5

Alopecosasp5#1104-1110 RT: 2.76-2.77
 F: FTMS + p ESI d Full ms2 132.10 ...
 m/z= 50.00000-1000.00000

m/z	Intensity	Relative
54.82498	960.3	0.67
67.76568	1139.7	0.79
69.07061	11669.6	8.11
72.93799	2091.1	1.45
80.46182	1049.5	0.73
82.84133	1115.6	0.77
86.09702	143969.3	100.00
86.10214	3179.8	2.21
91.07412	1049.0	0.73
94.82427	924.8	0.64
100.84551	1024.6	0.71
103.72080	1071.1	0.74
115.69923	1127.5	0.78
116.01442	1119.0	0.78
130.09922	984.3	0.68
135.95810	1213.8	0.84
143.11882	1038.6	0.72



NL: 7.30E5
 Alopecosasp5#1099 RT:
 2.75 AV: 1 T: FTMS + p
 ESI Full lock ms
 [100.00-1500.00]

NL: 1.40E5
 Alopecosasp5#1097-1117
 RT: 2.76-2.77 AV: 2 F:
 FTMS + p ESI d Full ms2
 132.10@hcd35.00
 [50.00-155.00]