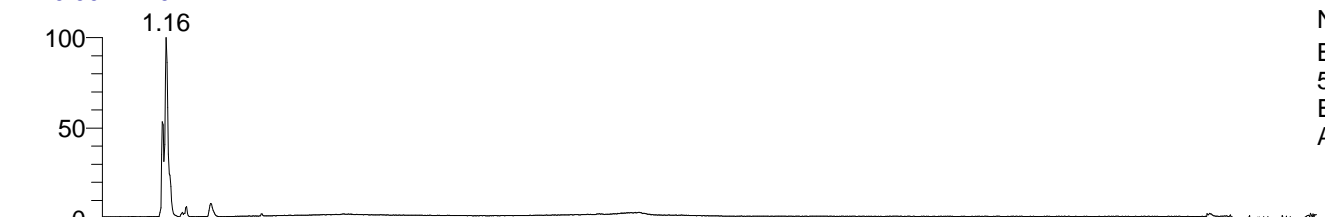


RT: 0.00 - 22.01

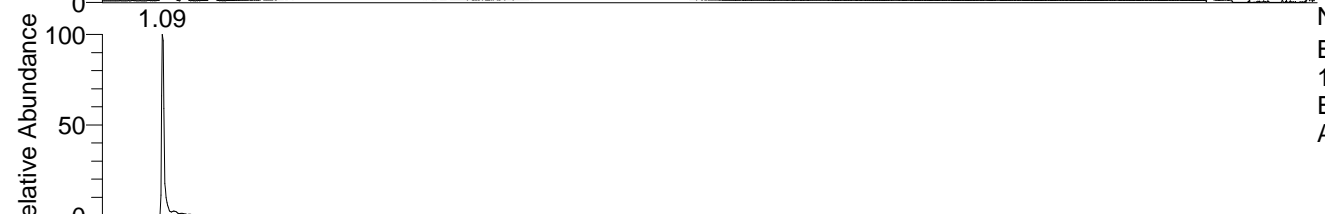


NL: 5.27E7  
 Base Peak m/z=  
 50.00000-1500.00000 F: FTMS + p  
 ESI Full ms [100.00-1500.00] MS  
 Alopecosasp5

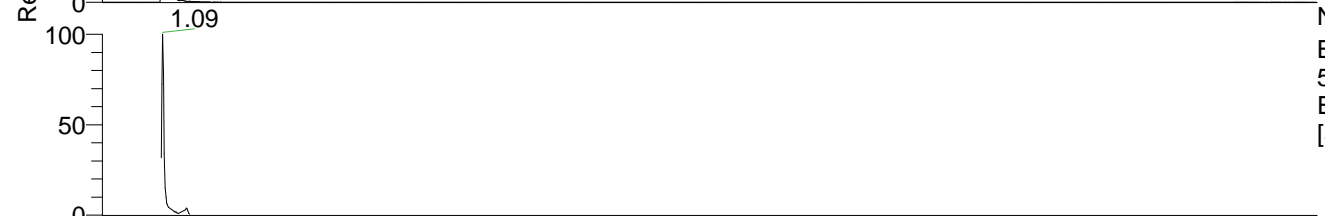
Alopecosasp5#424-468 RT: 1.07-1.17 AV: 8

F: FTMS + p ESI d Full ms2 112.05@hc ...

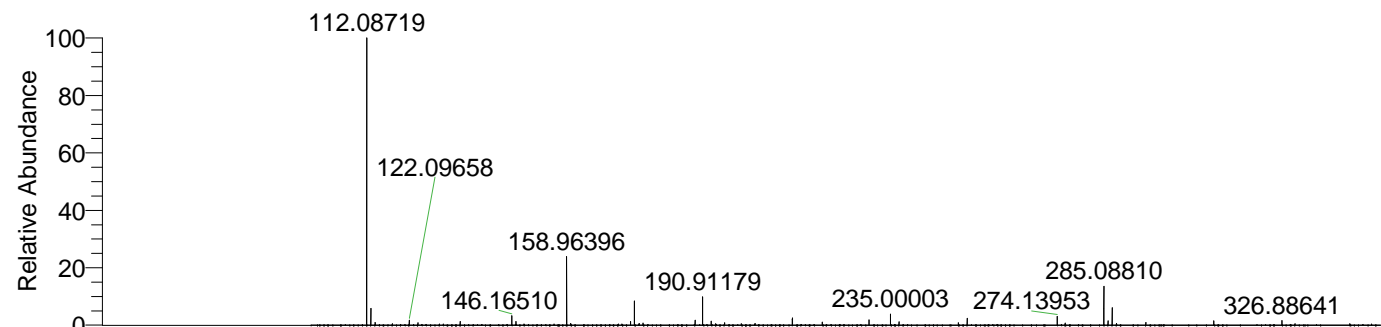
m/z	Intensity	Relative
68.05023	431152.3	2.42
83.06099	1357965.3	7.62
95.06085	17809848.0	100.00
112.08725	6551071.5	36.78



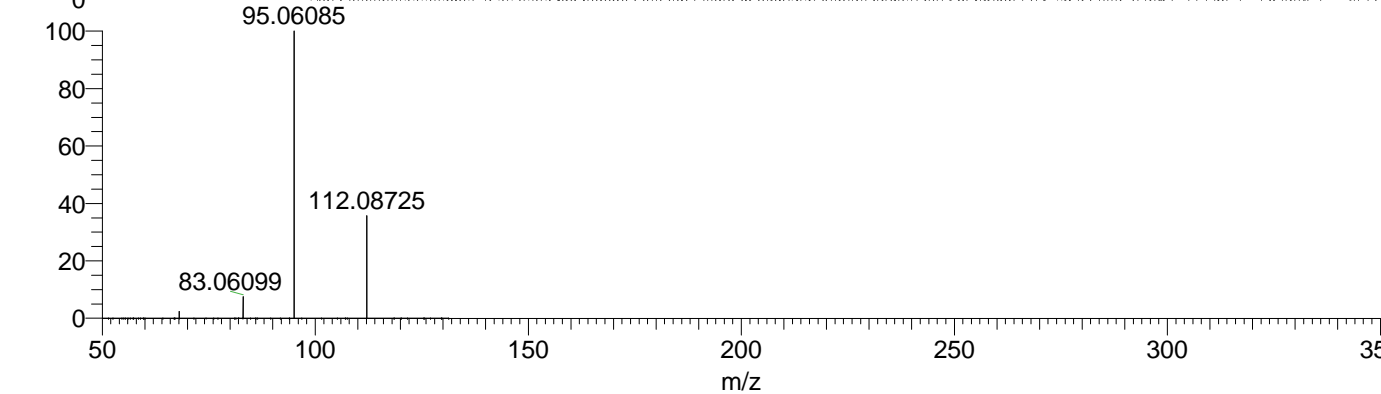
NL: 2.82E7  
 Base Peak m/z=  
 112.08691-112.08803 F: FTMS + p  
 ESI Full ms [100.00-1500.00] MS  
 Alopecosasp5



NL: 4.39E7  
 Base Peak m/z=  
 50.00000-1500.00000 F: FTMS + p  
 ESI d Full ms2 112.05@hcd35.00  
 [50.00-130.00] MS Alopecosasp5



NL: 2.67E7  
 Alopecosasp5#433 RT:  
 1.09 AV: 1 T: FTMS + p  
 ESI Full ms  
 [100.00-1500.00]



NL: 1.77E7  
 Alopecosasp5#400-468  
 RT: 1.07-1.17 AV: 8 F:  
 FTMS + p ESI d Full ms2  
 112.05@hcd35.00  
 [50.00-130.00]