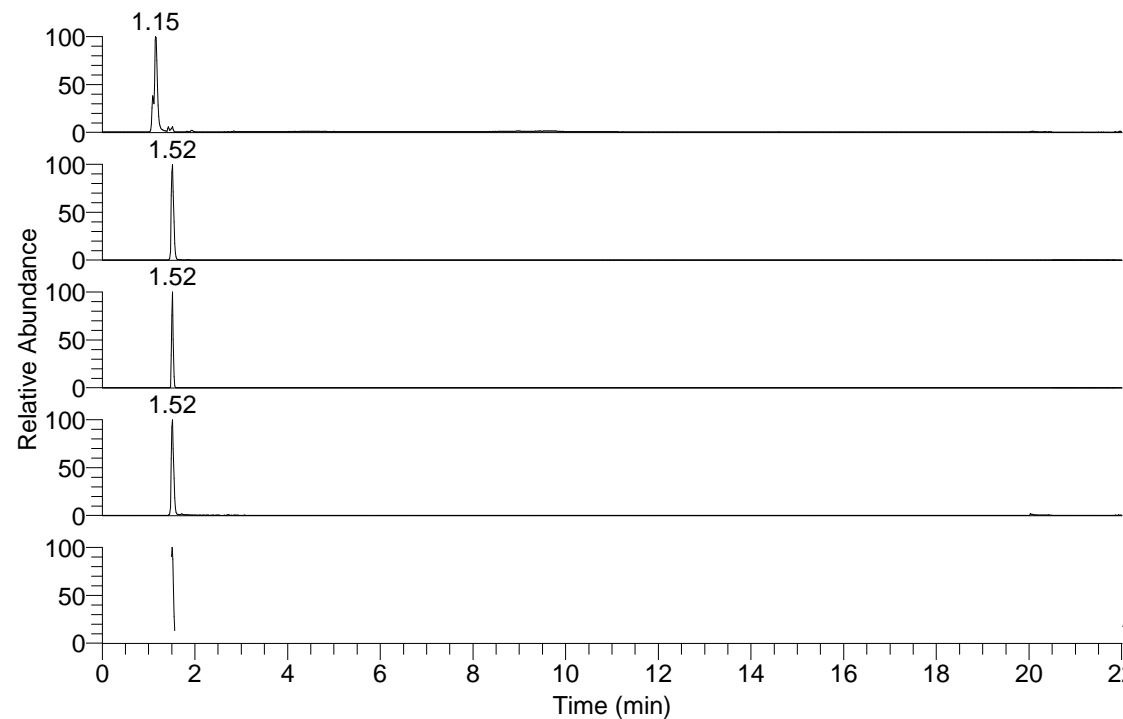


RT: 0.00 - 22.01



NL: 1.15E8  
Base Peak m/z= 50.00000-1500.00000 F: FTMS + p  
ESI Full ms [100.00-1500.00] MS Alopecosp4

NL: 3.29E6  
Base Peak m/z= 244.09213-244.09457 F: FTMS + p  
ESI Full ms [100.00-1500.00] MS Alopecosp4

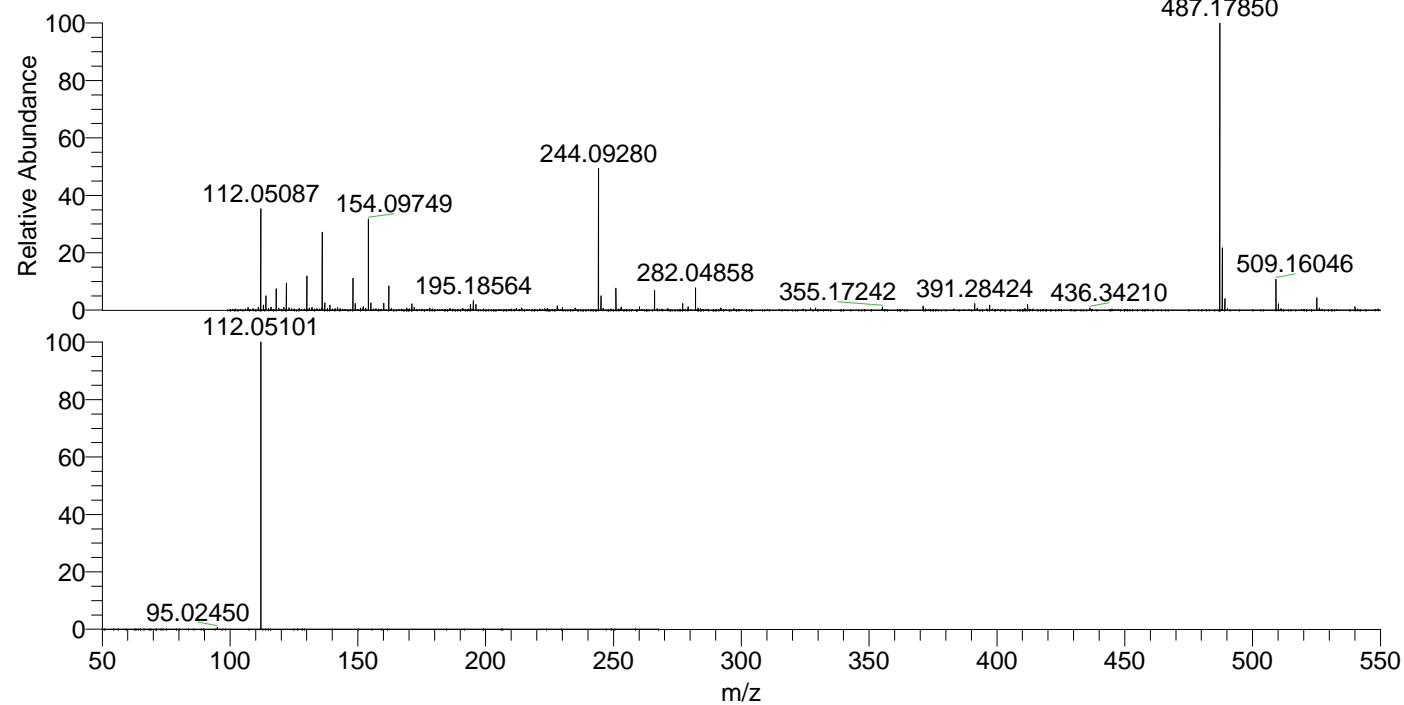
NL: 6.93E6  
Base Peak m/z= 487.17643-487.18131 F: FTMS + p  
ESI Full ms [100.00-1500.00] MS Alopecosp4

NL: 2.44E6  
Base Peak m/z= 112.05053-112.05165 F: FTMS + p  
ESI Full ms [100.00-1500.00] MS Alopecosp4

NL: 2.89E6  
Base Peak m/z= 50.00000-1500.00000 F: FTMS + p  
ESI d Full ms2 244.09@hcd35.00 [50.00-265.00] MS  
Alopecosp4

Alopecosp4#605-632 RT: 1.50-1.57 AV: 6  
F: FTMS + p ESI d Full ms2 244.09@h ...  
m/z= 50.00000-1000.00000

m/z	Intensity	Relative
95.02450	9446.2	0.55
112.05101	1716201.9	100.00



NL: 6.48E6  
Alopecosp4#613 RT:  
1.52 AV: 1 T: FTMS + p  
ESI Full lock ms  
[100.00-1500.00]

NL: 1.65E6  
Alopecosp4#582-672  
RT: 1.50-1.57 AV: 6 F:  
FTMS + p ESI d Full ms2  
244.09@hcd35.00  
[50.00-265.00]