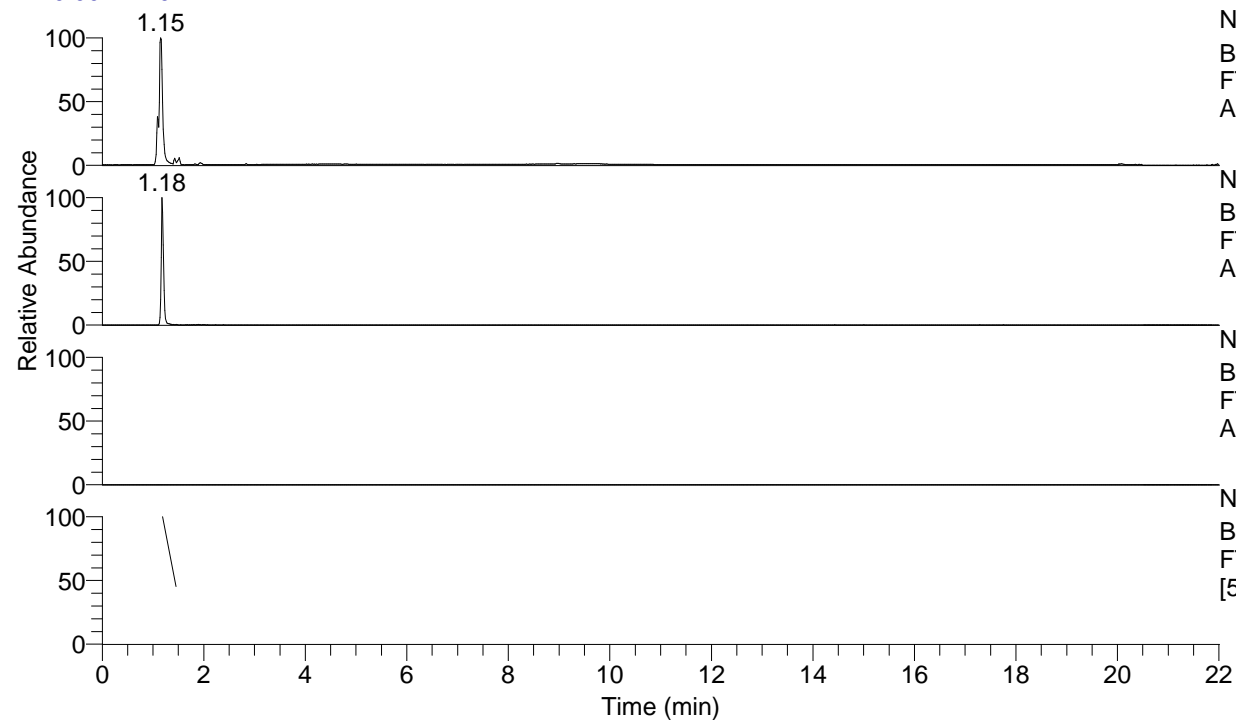


RT: 0.00 - 22.01



NL: 1.15E8
Base Peak m/z= 50.00000-1500.00000 F:
FTMS + p ESI Full ms [100.00-1500.00] MS
Alopecosasp4

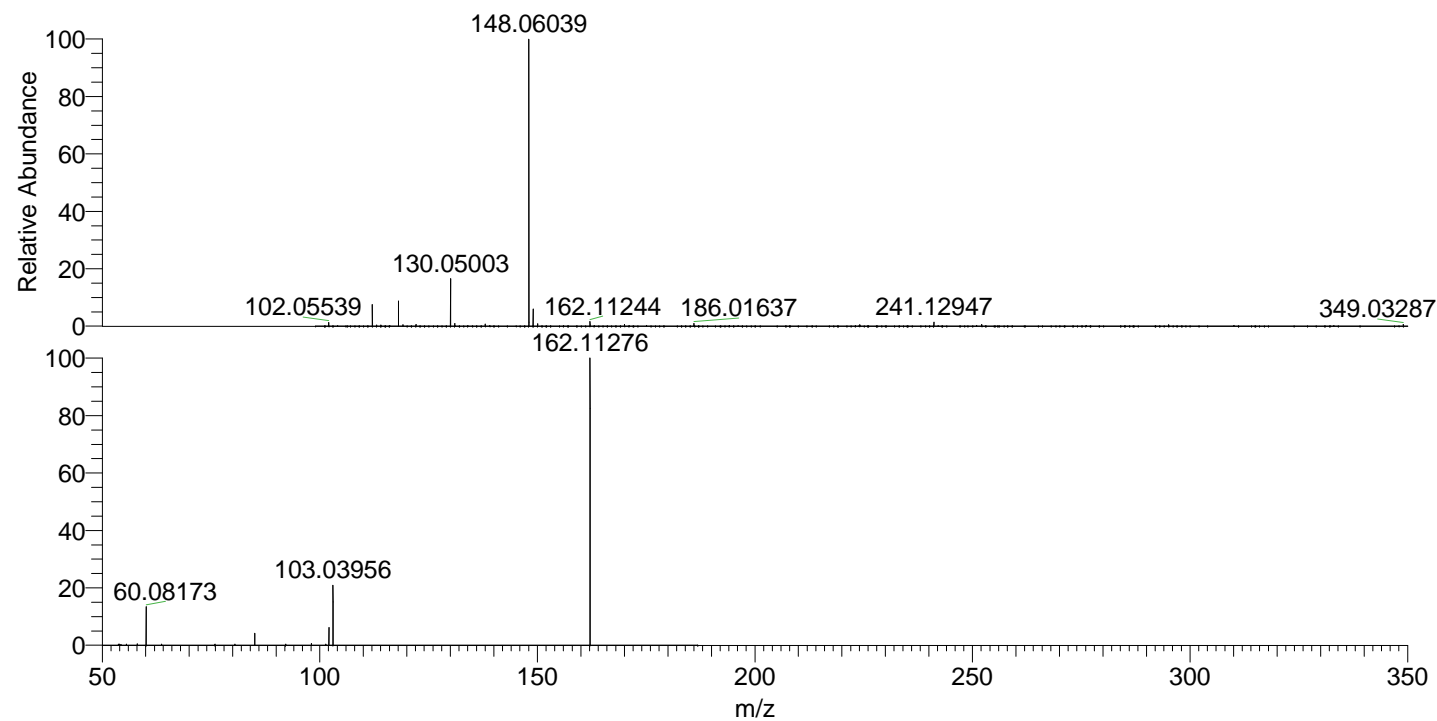
NL: 1.35E6
Base Peak m/z= 162.11140-162.11464 F:
FTMS + p ESI Full ms [100.00-1500.00] MS
Alopecosasp4

NL: 0
Base Peak m/z= 323.21498-323.22144 F:
FTMS + p ESI Full ms [100.00-1500.00] MS
Alopecosasp4

NL: 5.65E5
Base Peak m/z= 50.00000-1500.00000 F:
FTMS + p ESI d Full ms2 162.08@hcd35.00
[50.00-185.00] MS Alopecosasp4

Alopecosasp4#480 RT: 1.19
F: FTMS + p ESI d Full ms2 162.08 ...
m/z= 50.00000-1000.00000

m/z	Intensity	Relative
60.07889	3462.0	0.61
60.08173	80417.5	14.23
85.02916	23633.0	4.18
98.06044	3201.8	0.57
102.09209	34851.9	6.17
103.03956	118651.6	21.00
162.11276	565101.7	100.00



NL: 8.28E7
Alopecosasp4#475 RT:
1.18 AV: 1 T: FTMS + p
ESI Full ms
[100.00-1500.00]

NL: 5.62E5
Alopecosasp4#480 RT:
1.19 AV: 1 F: FTMS + p
ESI d Full ms2
162.08@hcd35.00
[50.00-185.00]