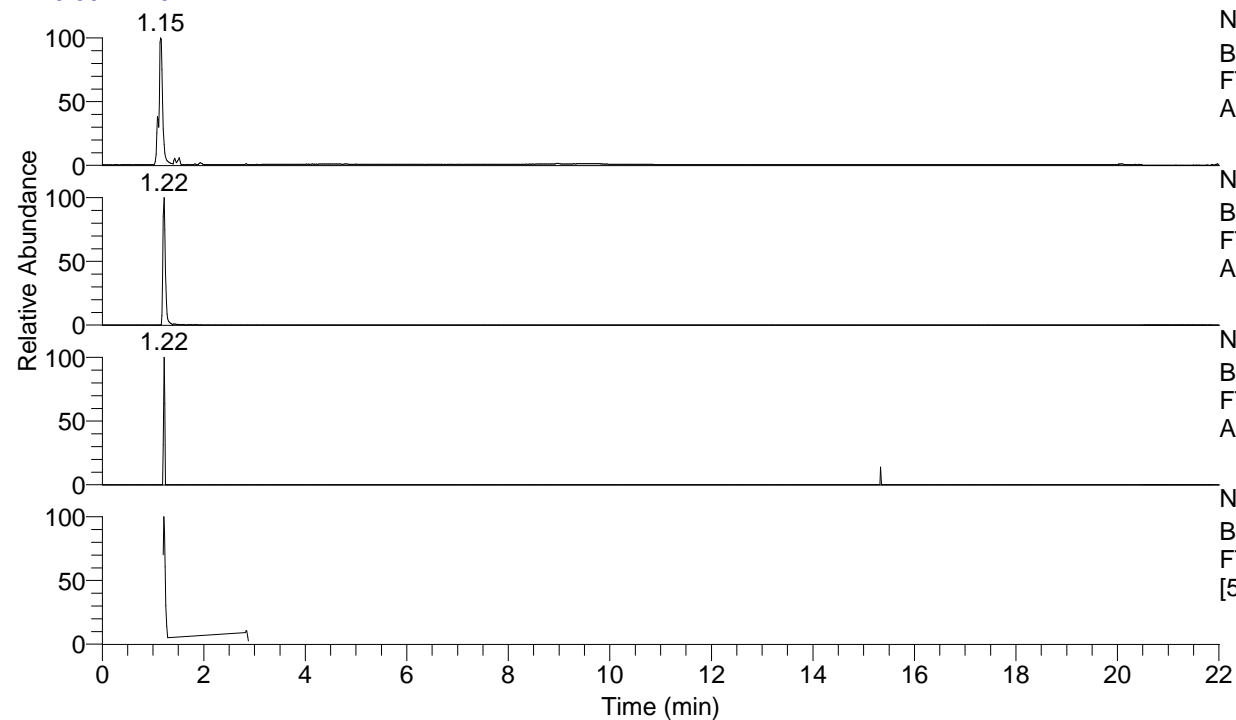


RT: 0.00 - 22.01



NL: 1.15E8
Base Peak m/z= 50.00000-1500.00000 F:
FTMS + p ESI Full ms [100.00-1500.00] MS
Alopecosasp4

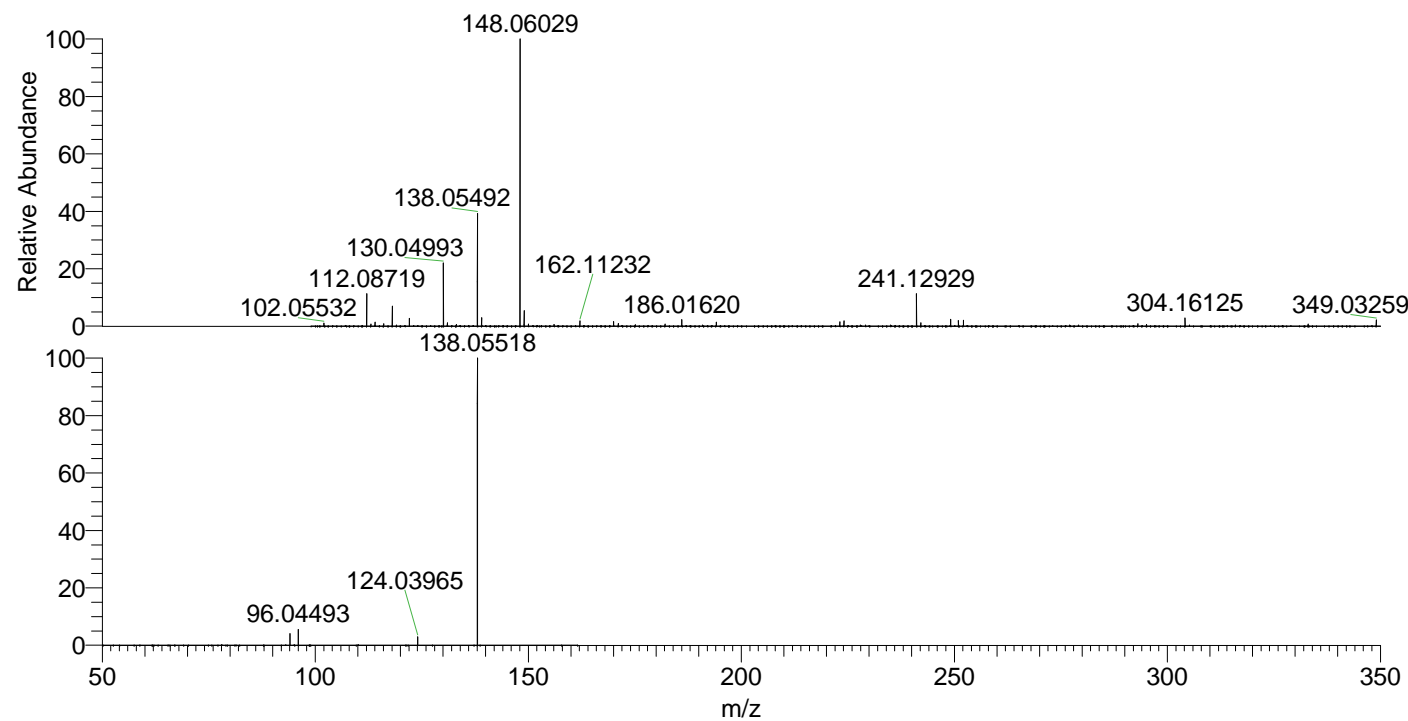
NL: 7.45E6
Base Peak m/z= 138.05481-138.05619 F:
FTMS + p ESI Full ms [100.00-1500.00] MS
Alopecosasp4

NL: 8.27E3
Base Peak m/z= 275.10180-275.10456 F:
FTMS + p ESI Full ms [100.00-1500.00] MS
Alopecosasp4

NL: 5.49E6
Base Peak m/z= 50.00000-1500.00000 F:
FTMS + p ESI d Full ms2 138.05@hcd35.00
[50.00-160.00] MS Alopecosasp4

Alopecosasp4#486-513 RT: 1.20-1.27 AV: 6
F: FTMS + p ESI d Full ms2 138.05@h ...
m/z= 50.00000-1000.00000

m/z	Intensity	Relative
94.06570	129401.3	4.05
96.04493	177578.6	5.56
124.03964	92785.3	2.91
138.05518	3192155.8	100.00



NL: 1.87E7
Alopecosasp4#493 RT:
1.22 AV: 1 T: FTMS + p
ESI Full lock ms
[100.00-1500.00]

NL: 2.77E6
Alopecosasp4#450-542
RT: 1.20-1.29 AV: 7 F:
FTMS + p ESI d Full ms2
138.05@hcd35.00
[50.00-160.00]