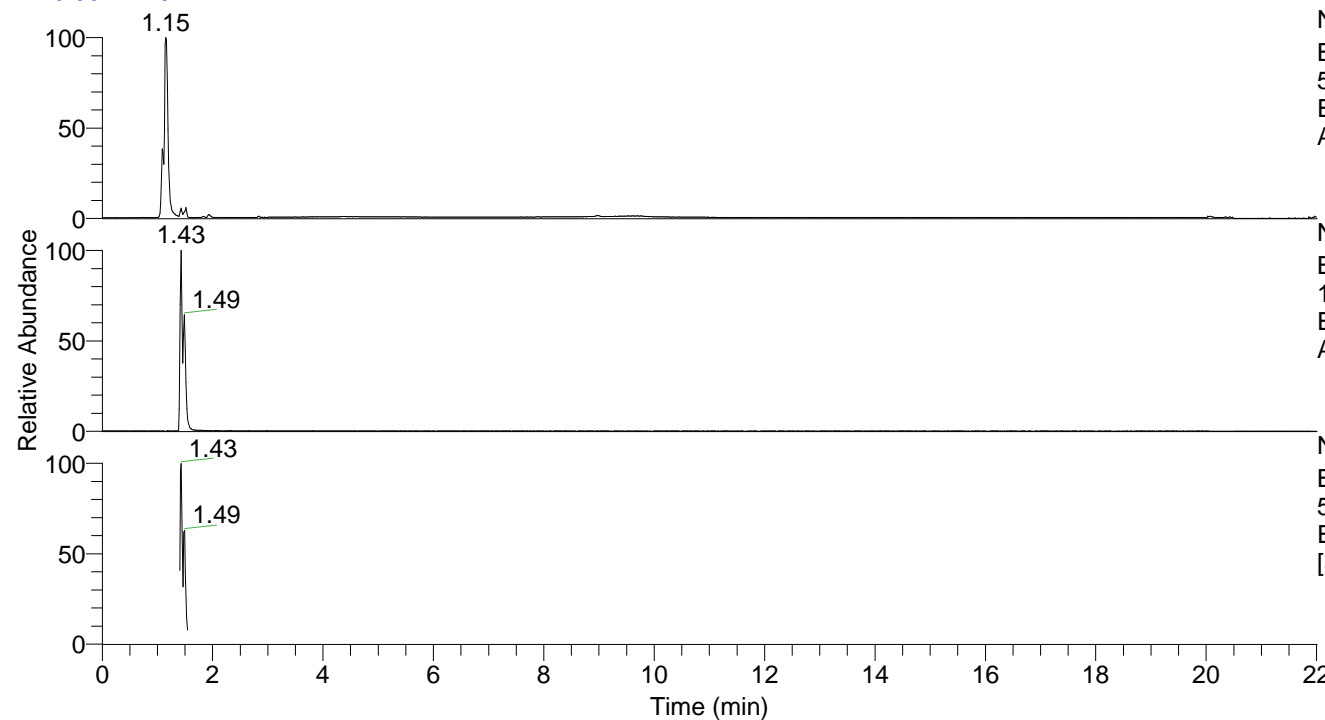


RT: 0.00 - 22.01



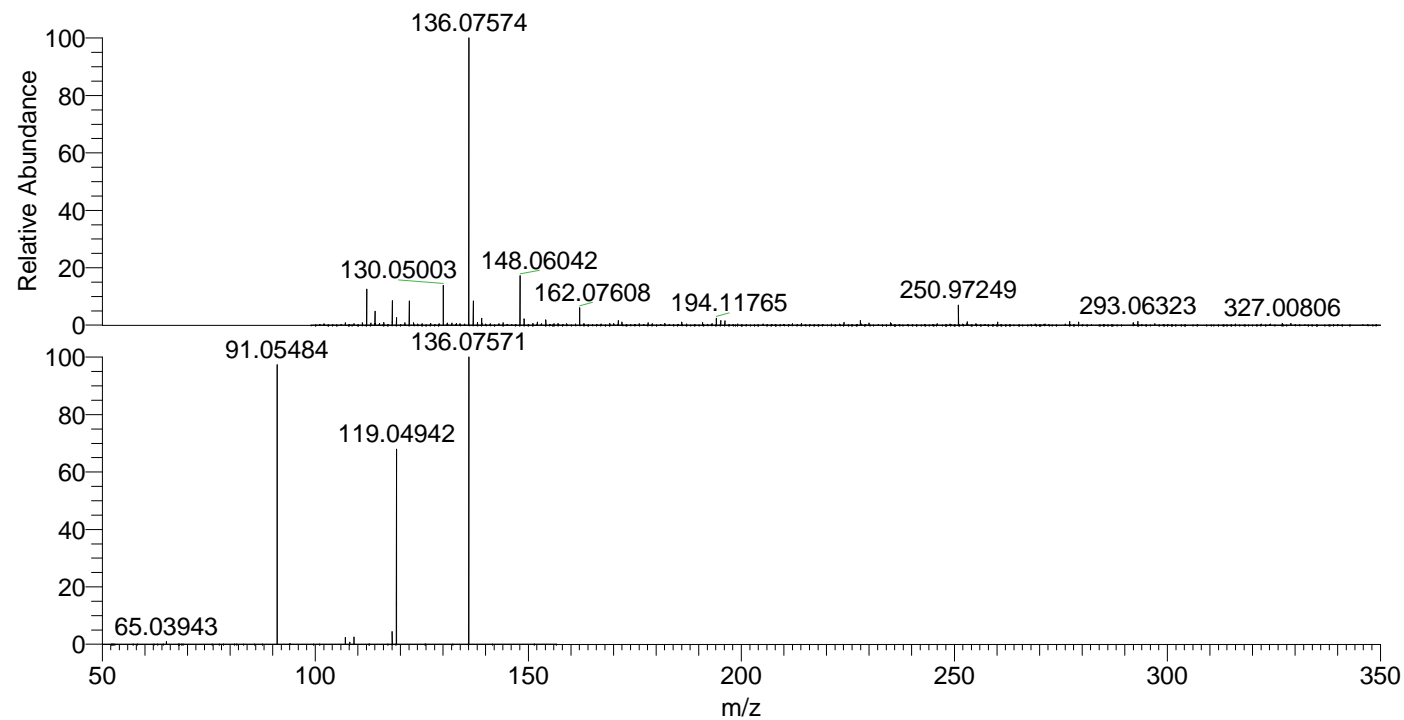
NL: 1.15E8
 Base Peak m/z=
 50.00000-1500.00000 F: FTMS + p
 ESI Full ms [100.00-1500.00] MS
 Alopecosasp4

NL: 6.55E6
 Base Peak m/z=
 136.07555-136.07691 F: FTMS + p
 ESI Full ms [100.00-1500.00] MS
 Alopecosasp4

NL: 2.19E6
 Base Peak m/z=
 50.00000-1500.00000 F: FTMS + p
 ESI d Full ms2 136.08@hcd35.00
 [50.00-155.00] MS Alopecosasp4

Alopecosasp4#568-584 RT: 1.41-1.45 AV: 4
 F: FTMS + p ESI d Full ms2 136.08@h ...
 m/z= 50.00000-1000.00000

m/z	Intensity	Relative
65.03943	13728.1	0.89
91.05484	1510985.5	98.22
107.04965	36695.0	2.39
108.08124	11997.0	0.78
109.06522	39519.2	2.57
118.06532	68087.7	4.43
119.04942	1040926.8	67.67
136.02200	35190.9	2.29
136.07571	1538314.6	100.00



NL: 6.55E6
 Alopecosasp4#577 RT:
 1.43 AV: 1 T: FTMS + p
 ESI Full lock ms
 [100.00-1500.00]

NL: 1.53E6
 Alopecosasp4#566-589
 RT: 1.41-1.45 AV: 4 F:
 FTMS + p ESI d Full ms2
 136.08@hcd35.00
 [50.00-155.00]