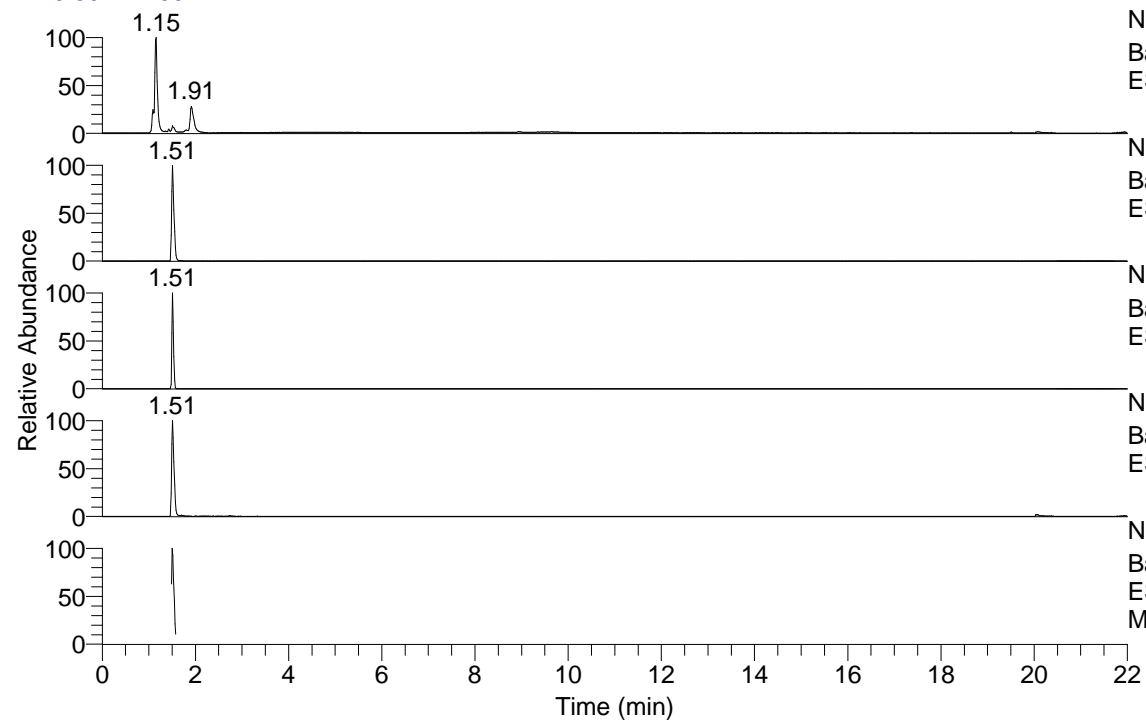


RT: 0.00 - 22.00



NL: 1.07E8
 Base Peak m/z= 50.00000-1500.00000 F: FTMS + p
 ESI Full ms [100.00-1500.00] MS Alopecosasp

NL: 3.87E6
 Base Peak m/z= 244.09213-244.09457 F: FTMS + p
 ESI Full ms [100.00-1500.00] MS Alopecosasp

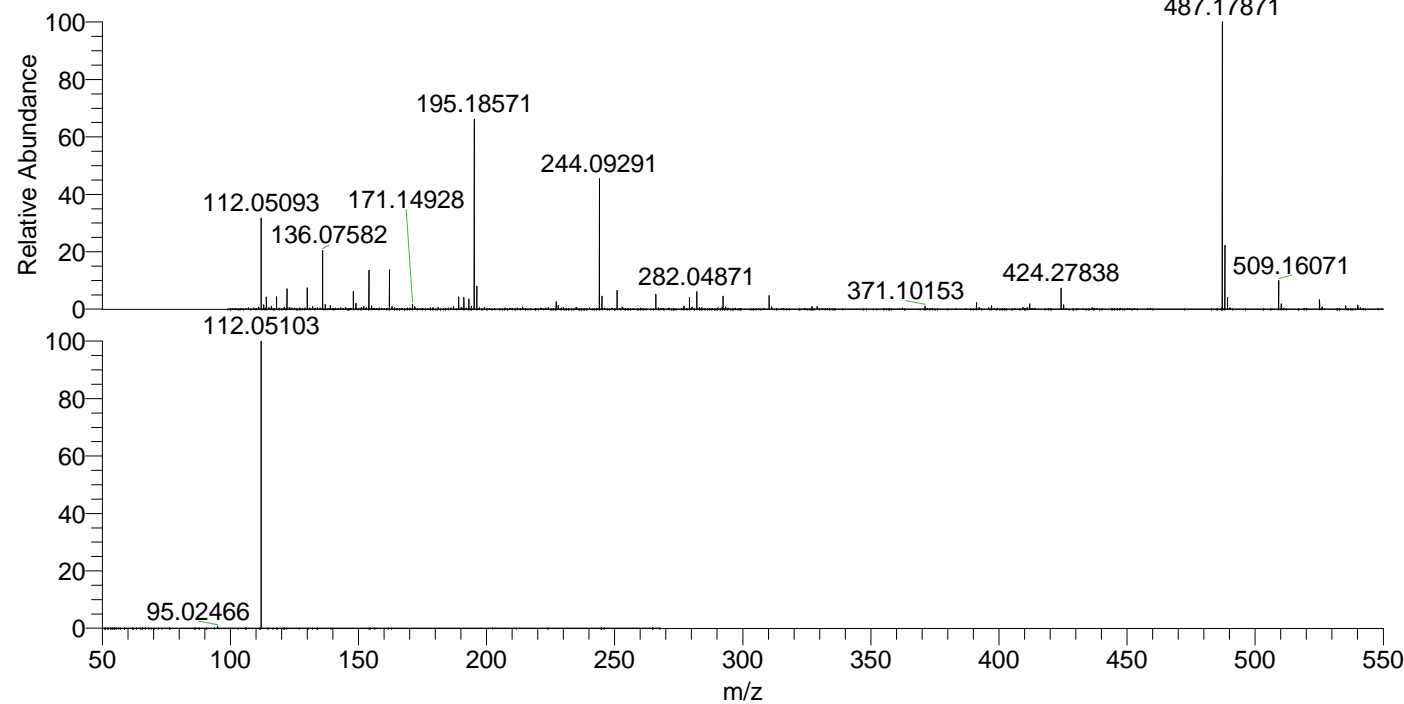
NL: 8.67E6
 Base Peak m/z= 487.17643-487.18131 F: FTMS + p
 ESI Full ms [100.00-1500.00] MS Alopecosasp

NL: 2.72E6
 Base Peak m/z= 112.05053-112.05165 F: FTMS + p
 ESI Full ms [100.00-1500.00] MS Alopecosasp

NL: 3.18E6
 Base Peak m/z= 50.00000-1500.00000 F: FTMS + p
 ESI d Full ms2 244.09@hcd35.00 [50.00-265.00]
 MS Alopecosasp

Alopecosasp#598-633 RT: 1.49-1.57 AV: 7
 F: FTMS + p ESI d Full ms2 244.09@h ...
 m/z= 50.00000-1000.00000

m/z	Intensity	Relative
95.02466	9429.7	0.55
112.05103	1699360.6	100.00



NL: 8.18E6
 Alopecosasp#607 RT:
 1.51 AV: 1 T: FTMS + p
 ESI Full lock ms
 [100.00-1500.00]

NL: 1.69E6
 Alopecosasp#566-655
 RT: 1.49-1.57 AV: 7 F:
 FTMS + p ESI d Full ms2
 244.09@hcd35.00
 [50.00-265.00]