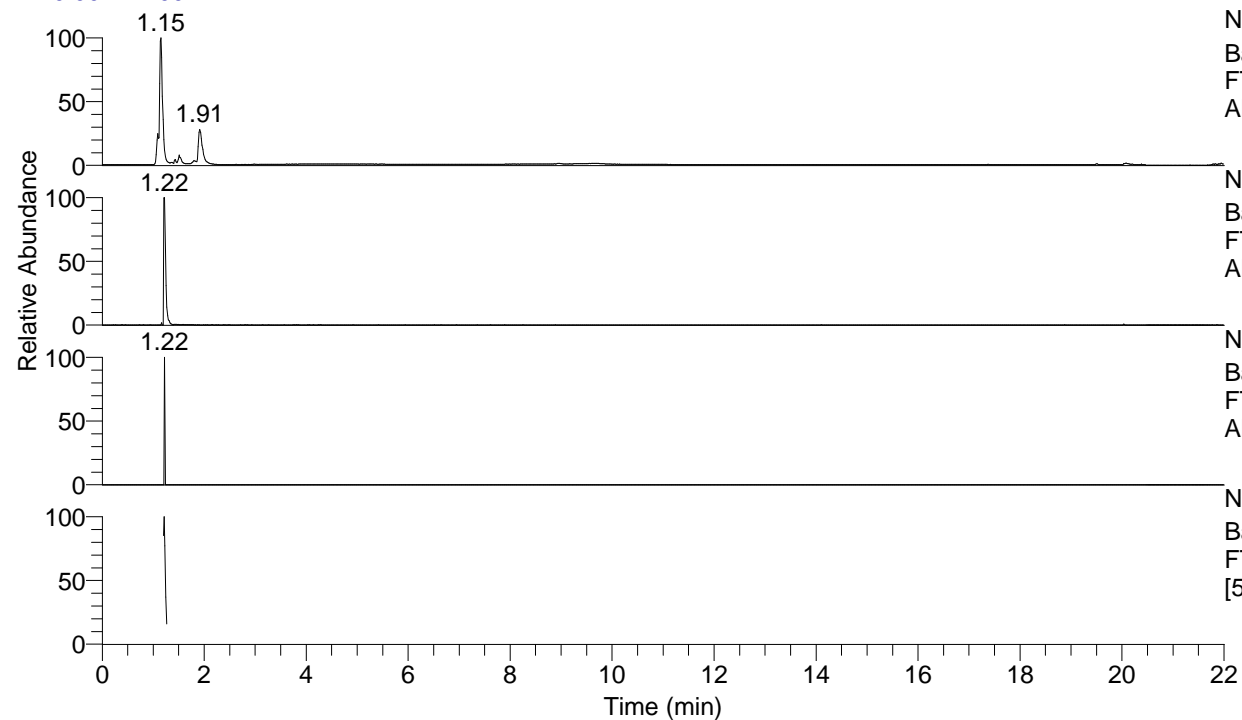


RT: 0.00 - 22.00



NL: 1.07E8
Base Peak m/z= 50.00000-1500.00000 F:
FTMS + p ESI Full ms [100.00-1500.00] MS
Alopecosasp

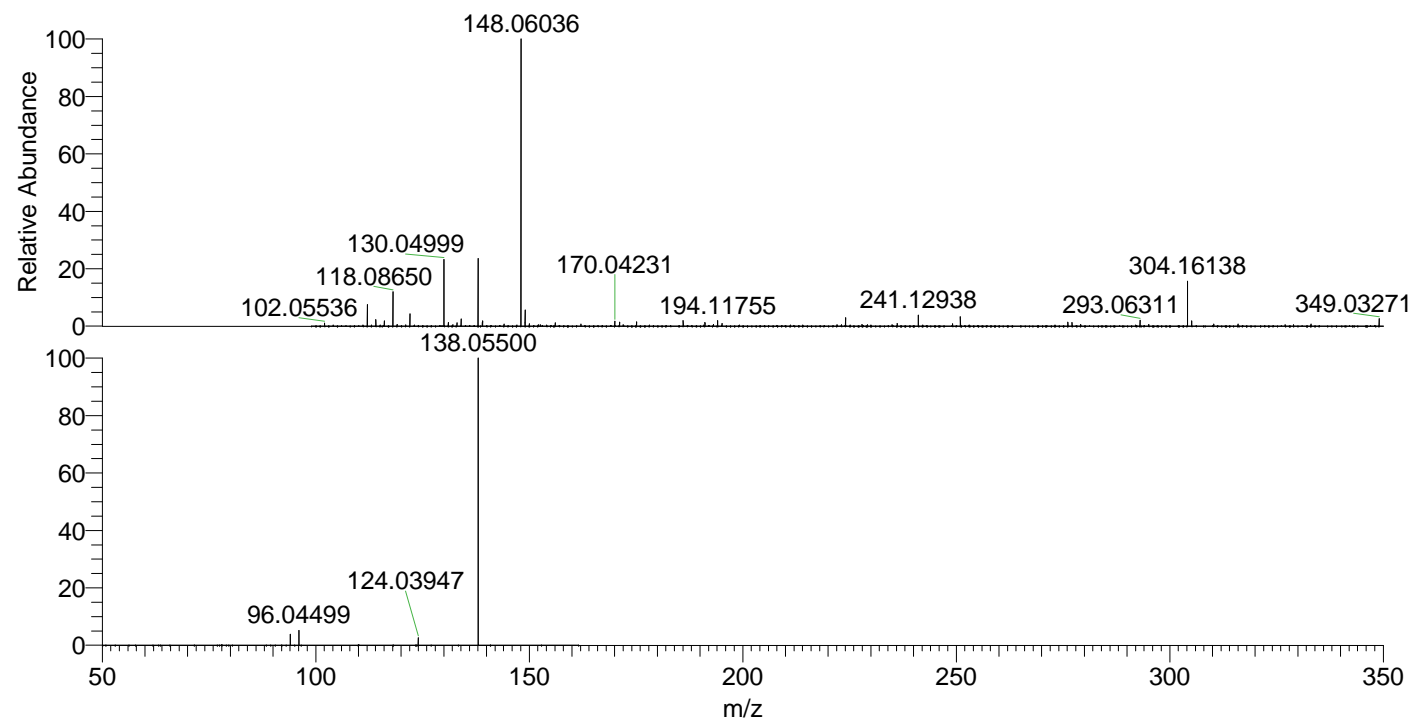
NL: 3.00E6
Base Peak m/z= 138.05481-138.05619 F:
FTMS + p ESI Full ms [100.00-1500.00] MS
Alopecosasp

NL: 2.37E3
Base Peak m/z= 275.10180-275.10456 F:
FTMS + p ESI Full ms [100.00-1500.00] MS
Alopecosasp

NL: 2.31E6
Base Peak m/z= 50.00000-1500.00000 F:
FTMS + p ESI d Full ms2 138.05@hcd35.00
[50.00-160.00] MS Alopecosasp

Alopecosasp#485-510 RT: 1.20-1.26 AV: 5
F: FTMS + p ESI d Full ms2 138.05@h ...
m/z= 50.00000-1000.00000

m/z	Intensity	Relative
94.06568	52421.9	3.80
96.04499	72733.0	5.27
124.03947	37049.6	2.69
138.05500	1379627.8	100.00



NL: 1.27E7
Alopecosasp#493 RT:
1.22 AV: 1 T: FTMS + p
ESI Full lock ms
[100.00-1500.00]

NL: 1.37E6
Alopecosasp#449-540
RT: 1.20-1.26 AV: 5 F:
FTMS + p ESI d Full ms2
138.05@hcd35.00
[50.00-160.00]