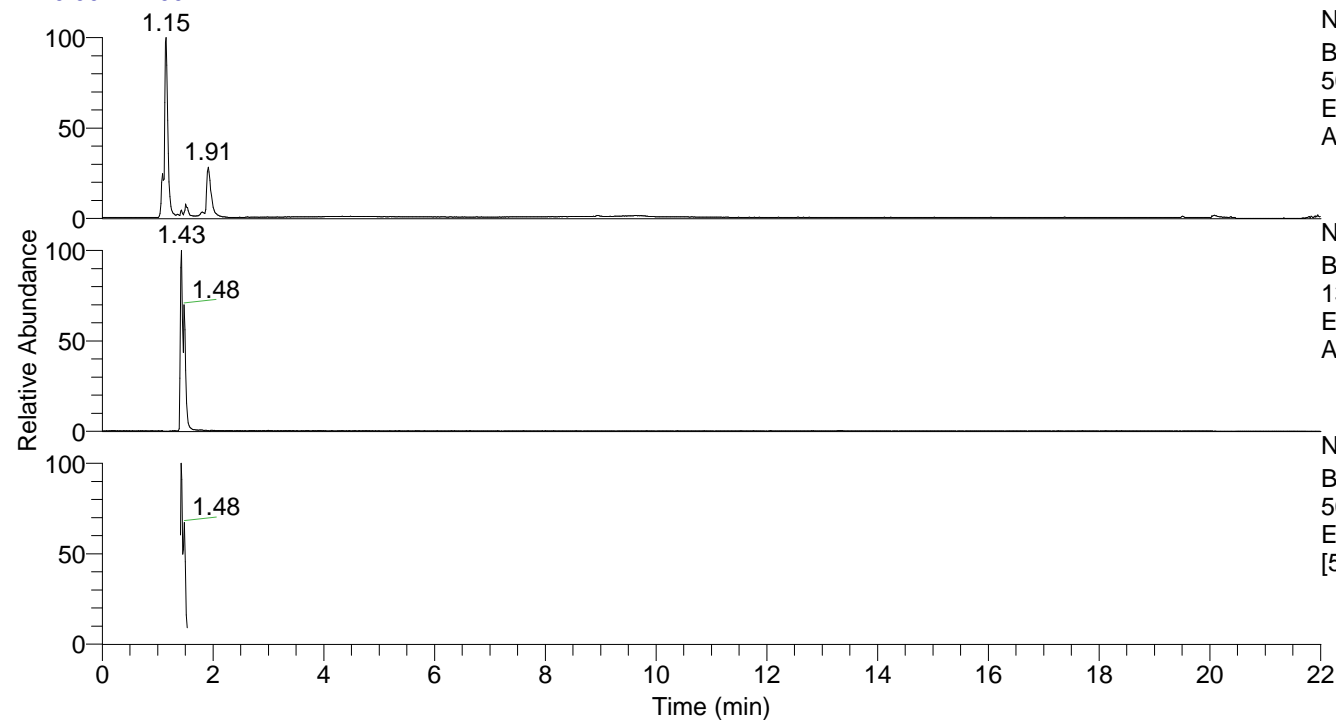


RT: 0.00 - 22.00



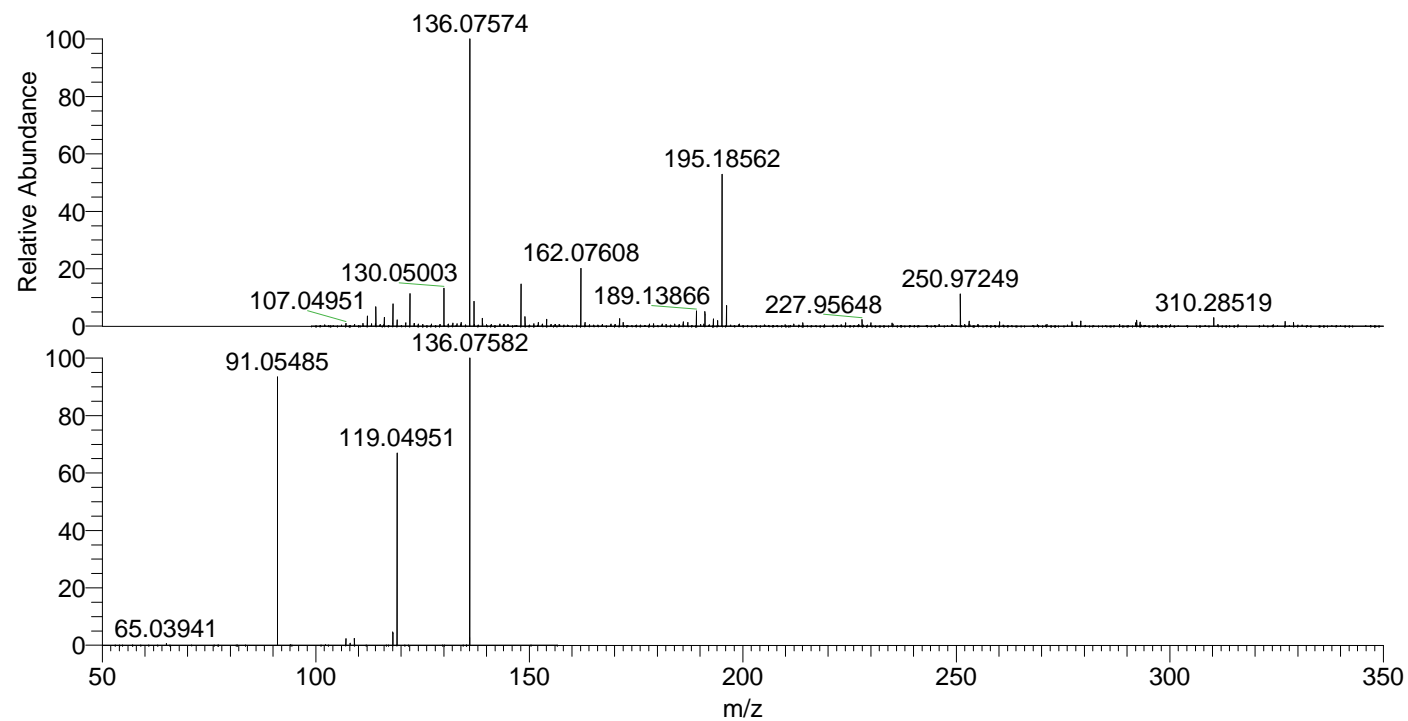
NL: 1.07E8
 Base Peak m/z=
 50.00000-1500.00000 F: FTMS + p
 ESI Full ms [100.00-1500.00] MS
 Alopecosasp

NL: 4.96E6
 Base Peak m/z=
 136.07555-136.07691 F: FTMS + p
 ESI Full ms [100.00-1500.00] MS
 Alopecosasp

NL: 1.72E6
 Base Peak m/z=
 50.00000-1500.00000 F: FTMS + p
 ESI d Full ms2 136.08@hcd35.00
 [50.00-155.00] MS Alopecosasp

Alopecosasp#568-584 RT: 1.41-1.45 AV: 4
 F: FTMS + p ESI d Full ms2 136.08@h ...
 m/z= 50.00000-1000.00000

m/z	Intensity	Relative
65.03941	8096.9	0.66
91.05485	1184509.4	96.82
107.04962	29018.5	2.37
108.08125	9582.9	0.78
109.06517	29815.0	2.44
118.06544	56575.4	4.62
119.04951	825739.4	67.49
136.02190	33370.8	2.73
136.07582	1223418.6	100.00



NL: 4.91E6
 Alopecosasp#577 RT:
 1.43 AV: 1 T: FTMS + p
 ESI Full lock ms
 [100.00-1500.00]

NL: 1.22E6
 Alopecosasp#565-586
 RT: 1.41-1.45 AV: 4 F:
 FTMS + p ESI d Full ms2
 136.08@hcd35.00
 [50.00-155.00]