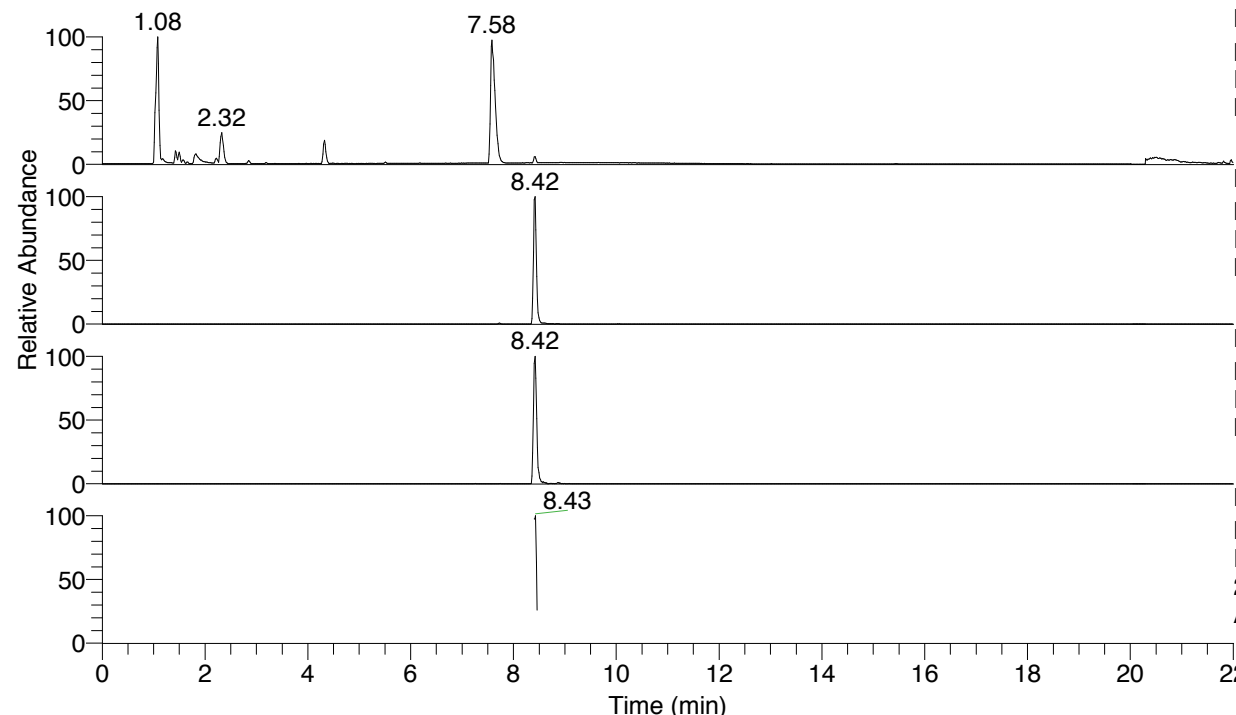


RT: 0.00 - 22.01



NL: 8.28E7
 Base Peak m/z= 100.00000-1500.00000 F:
 FTMS + p ESI Full ms [100.00-1500.00]
 MS Arobustus

NL: 5.11E6
 Base Peak m/z= 404.30053-404.30457 F:
 FTMS + p ESI Full ms [100.00-1500.00]
 MS Arobustus

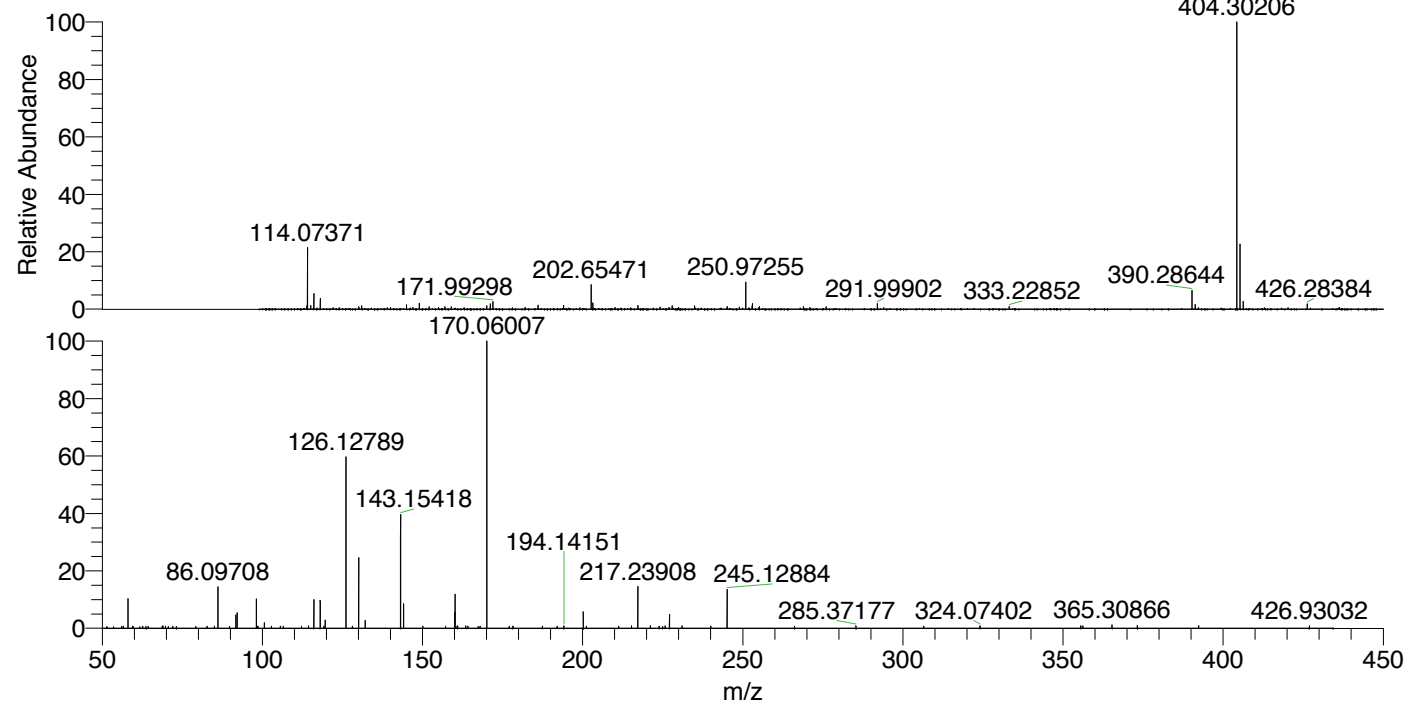
NL: 4.38E5
 Base Peak m/z= 202.65418-202.65620 F:
 FTMS + p ESI Full ms [100.00-1500.00]
 MS Arobustus

NL: 1.06E5
 Base Peak m/z= 50.00000-1500.00000 F:
 FTMS + p ESI d Full ms2
 202.65@hcd35.00 [50.00-430.00] MS
 Arobustus

Arobustus#3360-3377 RT: 8.40-8.44 AV:

F: FTMS + p ESI d Full ms2 202.65 ...
 m/z= 50.00000-1000.00000

m/z	Intensity	Relative
58.06591	9365.2	10.31
59.44281	676.4	0.75
62.66767	665.9	0.73
68.95266	740.8	0.82
69.76224	649.0	0.71
72.00223	706.2	0.78
86.09708	13613.6	14.99
91.75663	4264.2	4.70
92.09696	4987.6	5.49
98.09693	9468.2	10.43
98.57238	659.1	0.73
100.61027	1799.9	1.98
105.60271	686.4	0.76
106.55406	713.8	0.79
114.42217	772.9	0.85
116.07091	9336.5	10.28
118.06535	9004.6	9.92
119.59987	2609.2	2.87
126.12789	54510.9	60.04
128.11273	668.0	0.74
130.06507	22611.6	24.90
132.08123	2538.3	2.80
143.15418	36003.4	39.65
144.08121	7741.2	8.53
160.07567	5061.4	5.57
160.18081	10791.8	11.89
160.19247	661.3	0.73
160.83155	650.9	0.72
160.95082	715.2	0.79
163.53318	763.8	0.84
170.06007	90796.5	100.00
177.08291	707.3	0.78
178.23536	676.4	0.74
187.43516	653.2	0.72
192.04356	709.3	0.78
194.14151	750.4	0.83
200.21253	5192.2	5.72
201.20915	718.5	0.79
211.27729	708.5	0.78
215.29903	793.5	0.87
217.23908	13263.1	14.61
221.16005	875.8	0.96
225.74609	765.3	0.84
227.11723	4543.7	5.00
231.03689	809.6	0.89
245.12884	12332.9	13.58
266.17879	667.6	0.74
285.37177	719.1	0.79
324.07402	729.7	0.80
355.54304	749.9	0.83
356.19407	805.4	0.89
365.30866	1047.2	1.15
373.22273	838.7	0.92
392.36983	824.0	0.91
426.93032	734.8	0.81



NL: 5.02E6
 Arobustus#3367 RT: 8.42
 AV: 1 T: FTMS + p ESI
 Full ms [100.00-1500.00]

NL: 9.07E4
 Arobustus#3360-3383
 RT: 8.40-8.44 AV: 4 F:
 FTMS + p ESI d Full ms2
 202.65@hcd35.00
 [50.00-430.00]

Arobustus#3360-3377 RT: 8.40-8.44 AV: 4

F: FTMS + p ESI d Full ms2 202.65@hcd35.00 [50.00-430.00]

m/z= 50.00000-1000.00000

m/z	Intensity	Relative
51.46287	537.4	0.59
51.49157	524.2	0.58
53.58749	475.0	0.52
56.05485	542.2	0.60
56.53637	637.0	0.70
58.06591	9365.2	10.31
59.44281	676.4	0.75
59.68176	538.7	0.59
61.70427	506.3	0.56
62.66767	665.9	0.73
63.69192	534.2	0.59
64.31518	515.6	0.57
68.74927	648.3	0.71
68.95266	740.8	0.82
69.76224	649.0	0.71
70.62929	586.6	0.65
72.00223	706.2	0.78
73.18676	515.0	0.57
79.24546	579.5	0.64
82.70234	644.1	0.71
84.99315	643.3	0.71
86.09708	13613.6	14.99
89.72523	560.1	0.62
91.75663	4264.2	4.70
92.09696	4987.6	5.49
98.09693	9468.2	10.43
98.56436	605.6	0.67
98.57238	659.1	0.73
98.62897	589.9	0.65
100.61027	1799.9	1.98
102.81445	627.0	0.69
105.58408	597.6	0.66
105.60271	686.4	0.76
106.55406	713.8	0.79
112.25775	646.6	0.71
114.42217	772.9	0.85
116.07091	9336.5	10.28
118.06535	9004.6	9.92
119.25330	646.7	0.71

Arobustus#3360-3377 RT: 8.40-8.44 AV: 4

F: FTMS + p ESI d Full ms2 202.65@hcd35.00 [50.00-430.00]

m/z= 50.00000-1000.00000

m/z	Intensity	Relative
119.59987	2609.2	2.87
126.12789	54510.9	60.04
128.11273	668.0	0.74
130.06507	22611.6	24.90
132.08123	2538.3	2.80
143.15418	36003.4	39.65
144.08121	7741.2	8.53
150.06453	616.9	0.68
157.22477	643.6	0.71
160.07567	5061.4	5.57
160.18081	10791.8	11.89
160.19247	661.3	0.73
160.83155	650.9	0.72
160.95082	715.2	0.79
163.53318	763.8	0.84
164.15376	638.6	0.70
167.39367	589.0	0.65
167.98822	642.7	0.71
170.06007	90796.5	100.00
177.08291	707.3	0.78
178.23536	676.4	0.74
187.43516	653.2	0.72
192.04356	709.3	0.78
194.14151	750.4	0.83
200.21253	5192.2	5.72
201.20915	718.5	0.79
211.27729	708.5	0.78
215.29903	793.5	0.87
217.23908	13263.1	14.61
221.16005	875.8	0.96
223.90805	639.7	0.70
225.00525	598.2	0.66
225.74609	765.3	0.84
227.11723	4543.7	5.00
231.03689	809.6	0.89
240.00833	638.8	0.70
245.12884	12332.9	13.58
266.17879	667.6	0.74
285.37177	719.1	0.79

Arobustus#3360-3377 RT: 8.40-8.44 AV: 4

F: FTMS + p ESI d Full ms2 202.65@hcd35.00 [50.00-430.00]

m/z= 50.00000-1000.00000

m/z	Intensity	Relative
306.51811	647.4	0.71
324.07402	729.7	0.80
355.54304	749.9	0.83
356.19407	805.4	0.89
365.30866	1047.2	1.15
373.22273	838.7	0.92
392.36983	824.0	0.91
426.93032	734.8	0.81