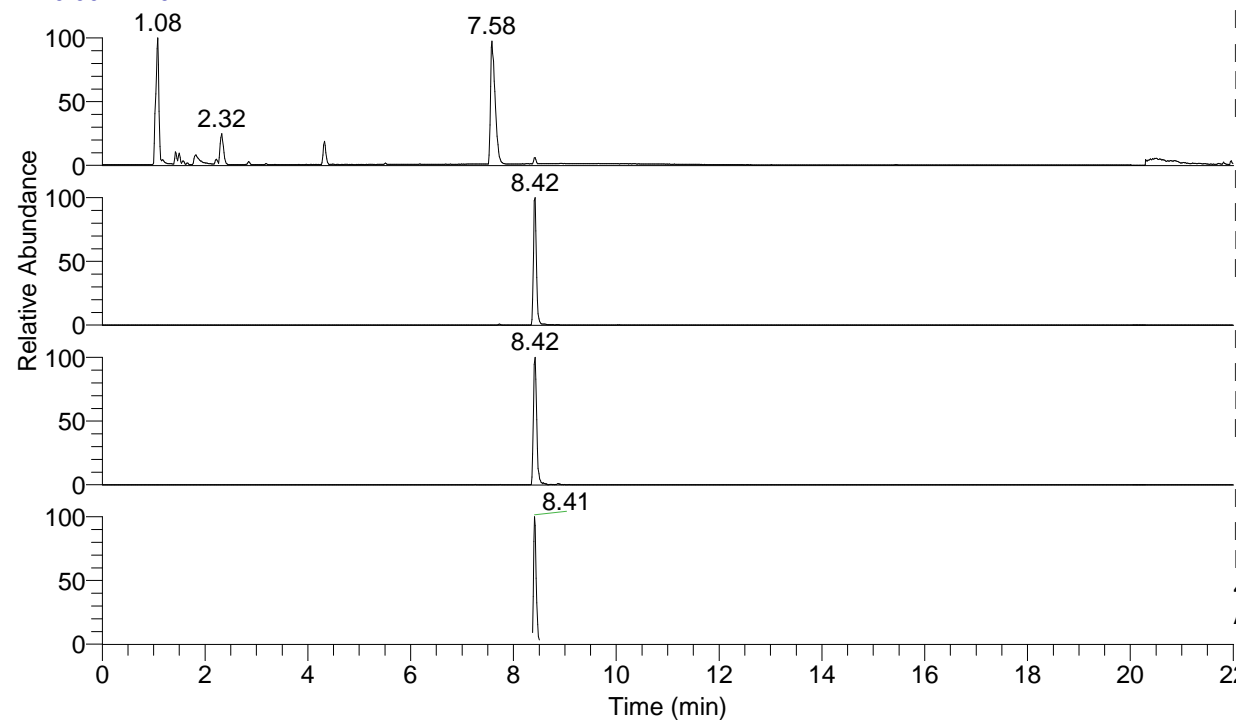


RT: 0.00 - 22.01



NL: 8.28E7  
 Base Peak m/z= 100.00000-1500.00000 F:  
 FTMS + p ESI Full ms [100.00-1500.00]  
 MS Arobustus

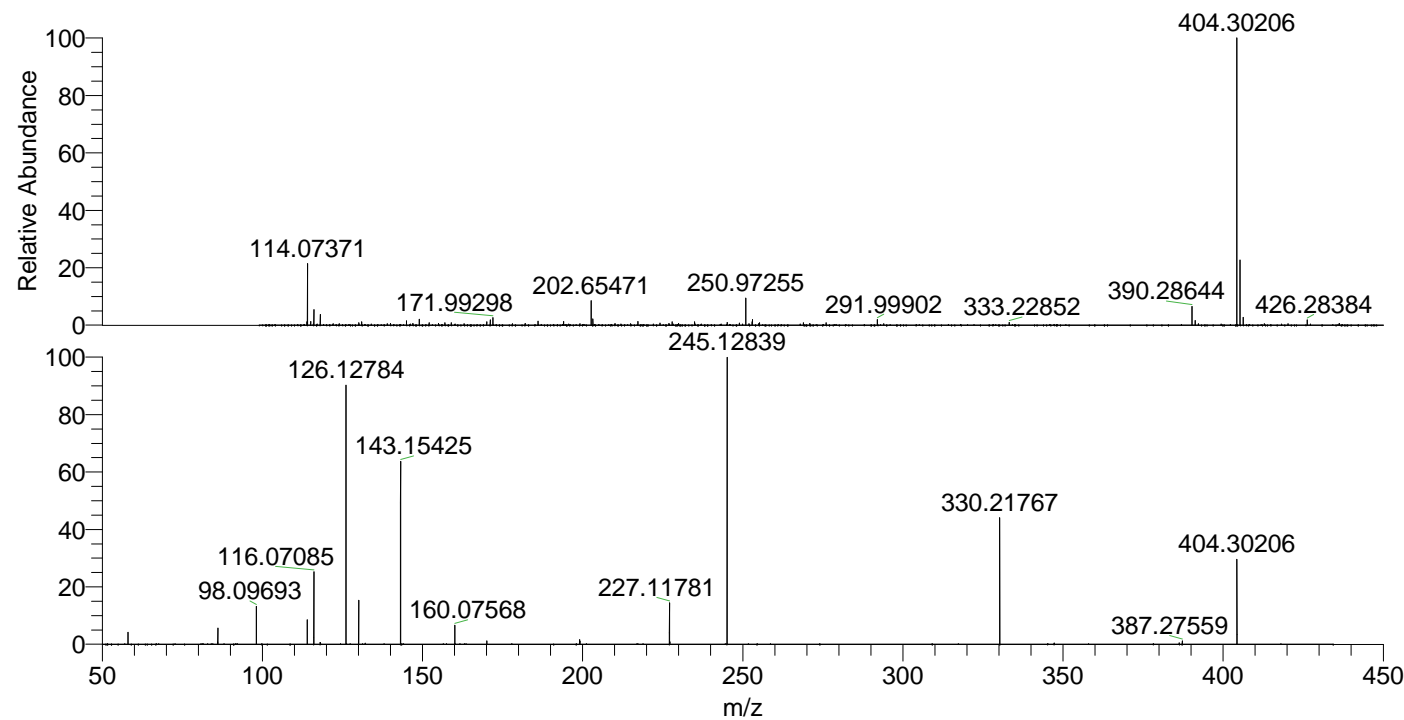
NL: 5.11E6  
 Base Peak m/z= 404.30053-404.30457 F:  
 FTMS + p ESI Full ms [100.00-1500.00]  
 MS Arobustus

NL: 4.38E5  
 Base Peak m/z= 202.65418-202.65620 F:  
 FTMS + p ESI Full ms [100.00-1500.00]  
 MS Arobustus

NL: 8.44E5  
 Base Peak m/z= 50.00000-1500.00000 F:  
 FTMS + p ESI d Full ms2  
 404.30@hcd35.00 [50.00-430.00] MS  
 Arobustus

Arobustus#3352-3380 RT: 8.38-8.45 AV:  
 F: FTMS + p ESI d Full ms2 404.30 ...  
 m/z= 50.00000-1000.00000

m/z	Intensity	Relative
58.06601	22627.1	4.21
86.06070	4803.1	0.89
86.09698	30701.6	5.72
98.09693	72666.6	13.53
114.05532	45782.9	8.53
116.07085	140218.4	26.12
118.06540	3283.7	0.61
126.12784	486483.8	90.61
130.06518	84125.3	15.67
143.15425	342539.1	63.80
160.07568	36551.9	6.81
170.06022	6409.8	1.19
199.08674	9078.1	1.69
199.14408	5391.6	1.00
227.11781	79319.6	14.77
227.22338	4671.1	0.87
245.12839	536920.5	100.00
330.21767	239748.8	44.65
387.27559	6621.0	1.23
404.30206	162278.5	30.22



NL: 5.02E6  
 Arobustus#3367 RT: 8.42  
 AV: 1 T: FTMS + p ESI  
 Full ms [100.00-1500.00]

NL: 5.36E5  
 Arobustus#3349-3380  
 RT: 8.38-8.45 AV: 6 F:  
 FTMS + p ESI d Full ms2  
 404.30@hcd35.00  
 [50.00-430.00]