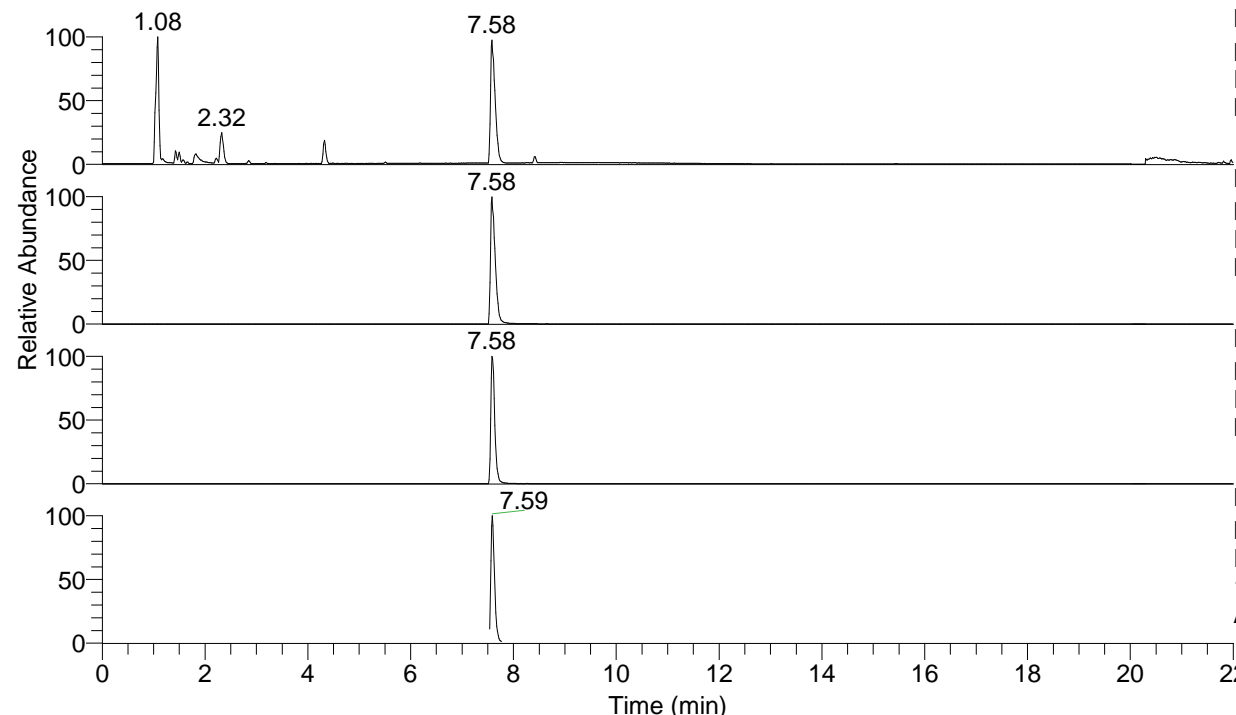


RT: 0.00 - 22.01



NL: 8.28E7  
 Base Peak m/z= 100.00000-1500.00000 F:  
 FTMS + p ESI Full ms [100.00-1500.00]  
 MS Arobustus

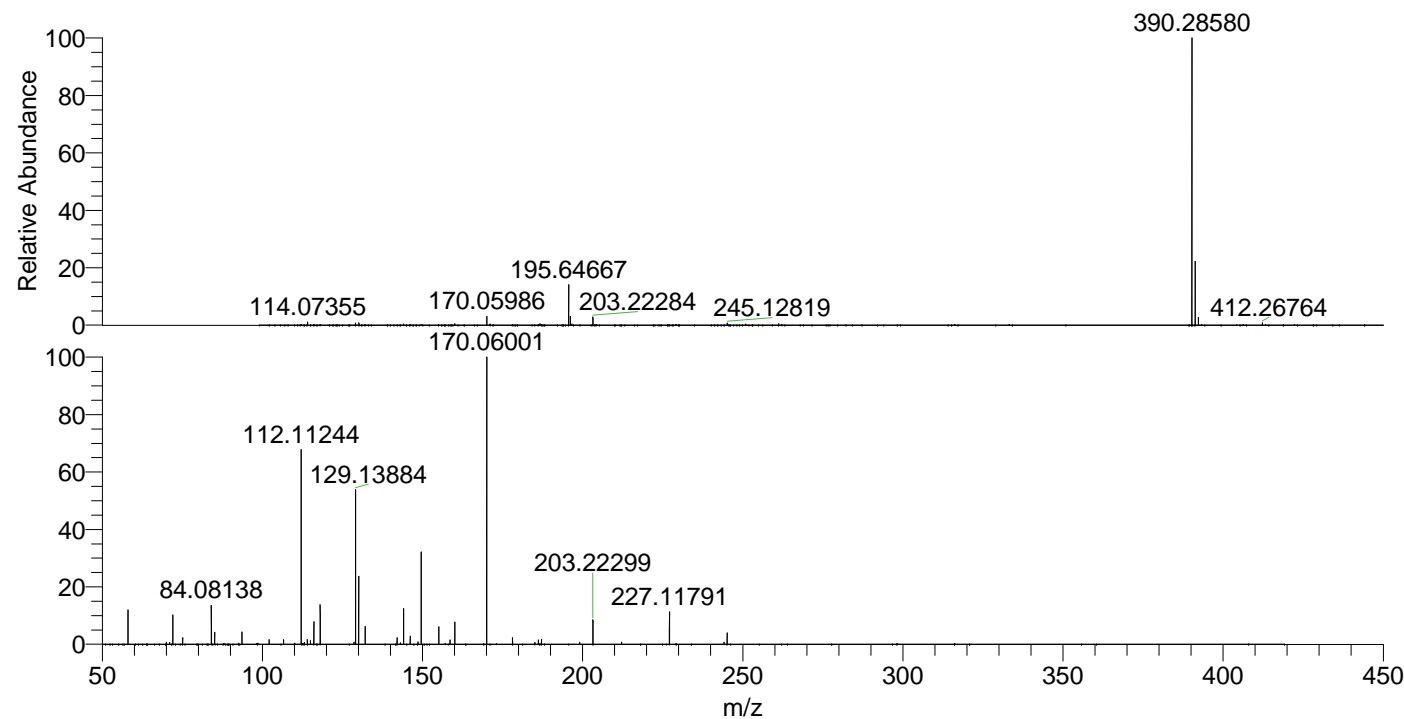
NL: 8.08E7  
 Base Peak m/z= 390.28495-390.28885 F:  
 FTMS + p ESI Full ms [100.00-1500.00]  
 MS Arobustus

NL: 1.14E7  
 Base Peak m/z= 195.64638-195.64834 F:  
 FTMS + p ESI Full ms [100.00-1500.00]  
 MS Arobustus

NL: 3.15E6  
 Base Peak m/z= 50.00000-1500.00000 F:  
 FTMS + p ESI d Full ms2  
 195.65@hcd35.00 [50.00-415.00] MS  
 Arobustus

Arobustus#3022-3051 RT: 7.56-7.63 AV: 6  
 F: FTMS + p ESI d Full ms2 195.65@h ...  
 m/z= 50.00000-1000.00000

m/z	Intensity	Relative
58.06597	284748.8	12.14
70.06581	16644.4	0.71
71.07369	13369.8	0.57
72.08152	234916.0	10.02
75.09236	52230.2	2.23
84.08138	321828.2	13.73
85.08922	95701.4	4.08
93.60234	100234.0	4.28
102.11541	38677.8	1.65
106.59188	36799.4	1.57
112.11244	1565790.8	66.78
113.07133	14749.2	0.63
114.05535	36681.7	1.56
114.06288	35307.4	1.51
115.05443	28801.9	1.23
116.07098	181138.0	7.73
118.06546	320255.2	13.66
128.59422	16400.8	0.70
129.13884	1244703.3	53.09
130.06534	548421.4	23.39
132.08095	143492.0	6.12
142.06497	54141.3	2.31
144.08087	285210.7	12.16
146.16536	64989.7	2.77
148.59145	20223.9	0.86
149.59943	740592.3	31.59
155.11789	140619.6	6.00
158.60473	34048.4	1.45
160.07580	179621.7	7.66
170.06001	2344626.5	100.00
178.12835	53693.4	2.29
185.12844	13190.2	0.56
186.19672	35005.0	1.49
187.14460	39058.7	1.67
199.08653	16123.3	0.69
203.22299	200426.9	8.55
212.17563	17162.8	0.73
227.11791	261195.1	11.14
244.14467	15798.1	0.67
245.12841	94096.2	4.01



NL: 8.06E7  
 Arobustus#3031 RT: 7.58  
 AV: 1 T: FTMS + p ESI  
 Full ms [100.00-1500.00]

NL: 2.30E6  
 Arobustus#3016-3056  
 RT: 7.56-7.63 AV: 6 F:  
 FTMS + p ESI d Full ms2  
 195.65@hcd35.00  
 [50.00-415.00]