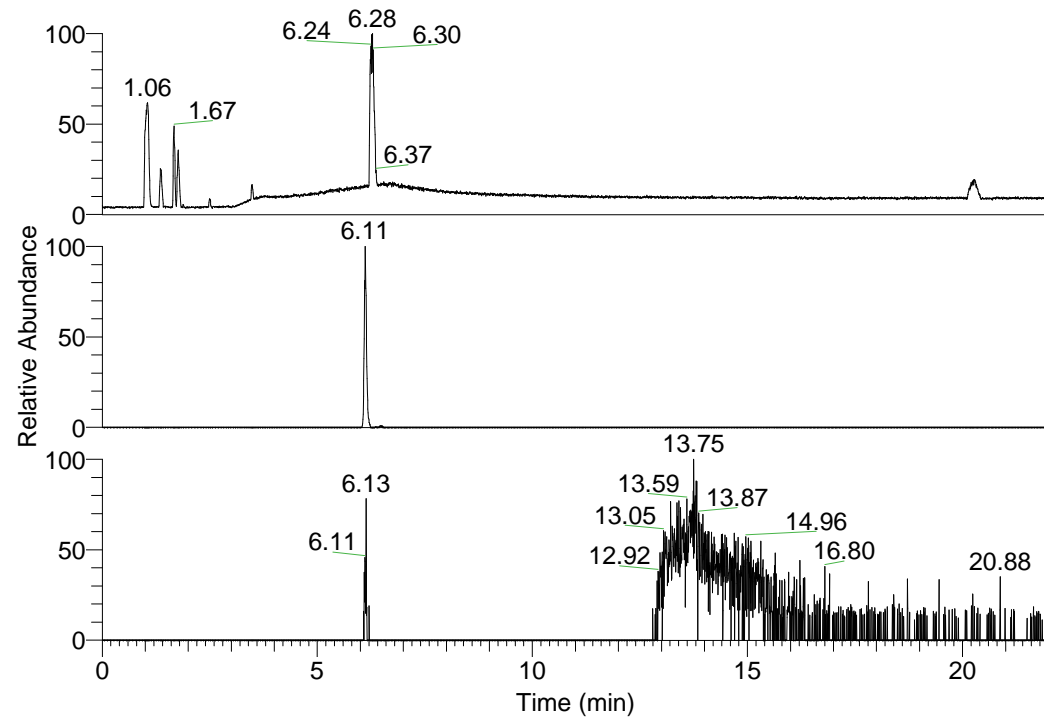


RT: 0.00 - 22.01



NL: 1.84E8
Base Peak m/z=
100.00000-1500.00000 F:
FTMS + p ESI Full ms
[100.00-1500.00] MS
Arobustus_HDX

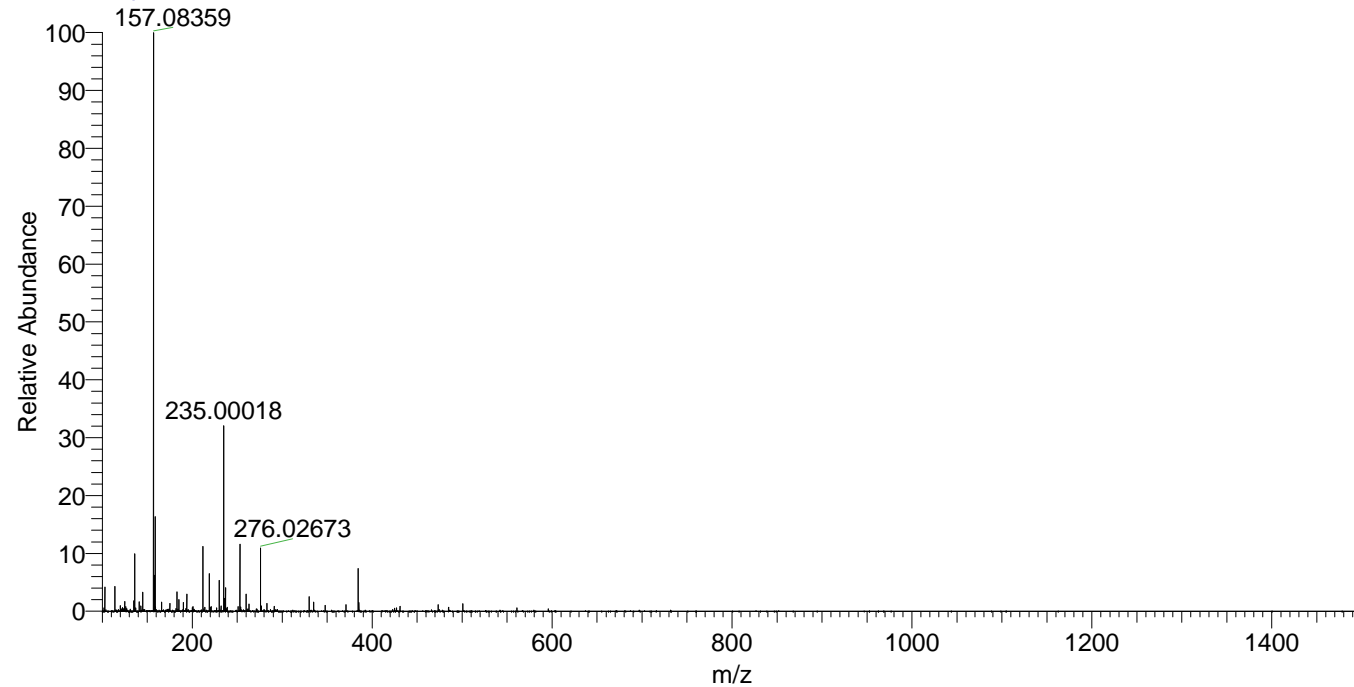
NL: 2.62E6
Base Peak m/z=
384.31955-384.32339 F:
FTMS + p ESI Full ms
[100.00-1500.00] MS
Arobustus_HDX

NL: 3.04E4
Base Peak m/z=
193.16681-193.16875 F:
FTMS + p ESI Full ms
[100.00-1500.00] MS
Arobustus_HDX

Arobustus_HDX#956 RT: 6.11
T: FTMS + p ESI Full ms [100.00-1500.00]
m/z= 384.00000-385.00000

m/z	Intensity	Relative	Delta (ppm)	Composition
384.32086	2008557.8	100.00	-0.14	C ₂₀ H ₂₆ ² H ₈ O ₂ N ₅
			3.89	C ₂₀ H ₂₄ ² H ₉ O ₂ N ₅
			-4.17	C ₂₀ H ₂₈ ² H ₇ O ₂ N ₅

Arobustus_HDX #956 RT: 6.11 AV: 1 NL: 2.71E7
T: FTMS + p ESI Full ms [100.00-1500.00]



Arobustus_HDX #956 RT: 6.11 AV: 1 NL: 2.01E6
T: FTMS + p ESI Full ms [100.00-1500.00]

