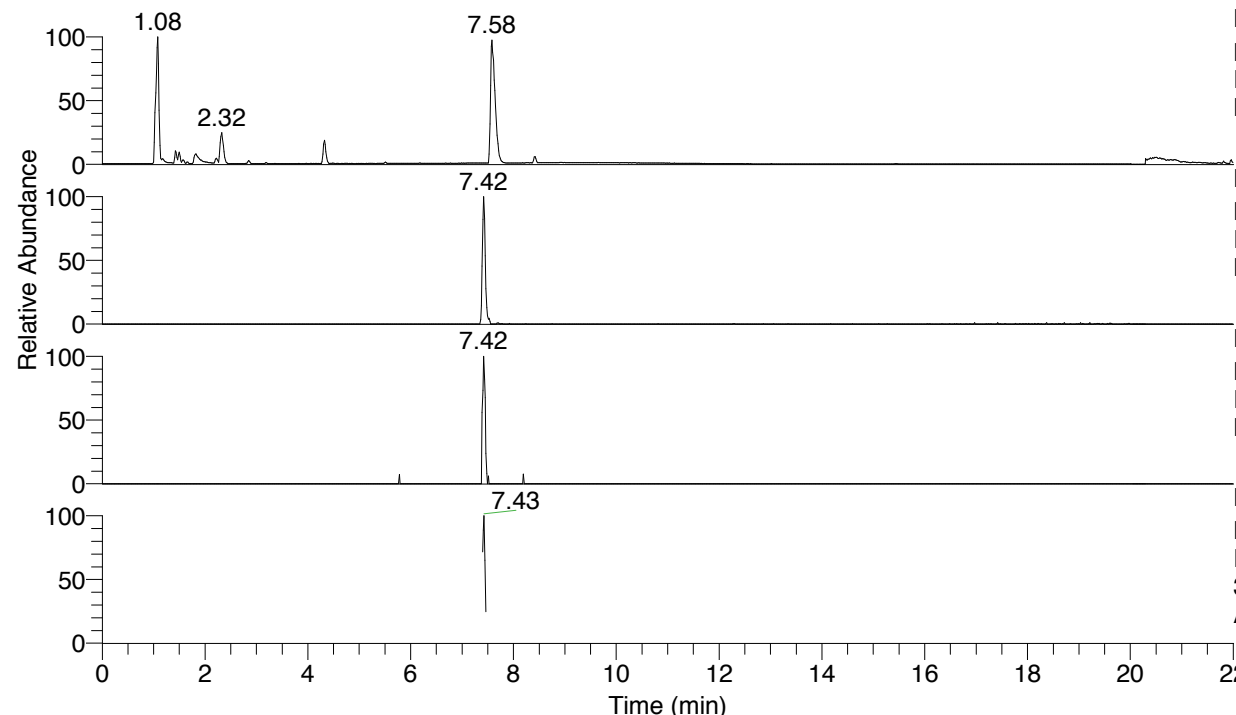


RT: 0.00 - 22.01



NL: 8.28E7
 Base Peak m/z= 100.00000-1500.00000 F:
 FTMS + p ESI Full ms [100.00-1500.00]
 MS Arobustus

NL: 3.09E5
 Base Peak m/z= 376.26937-376.27313 F:
 FTMS + p ESI Full ms [100.00-1500.00]
 MS Arobustus

NL: 1.61E4
 Base Peak m/z= 188.63860-188.64048 F:
 FTMS + p ESI Full ms [100.00-1500.00]
 MS Arobustus

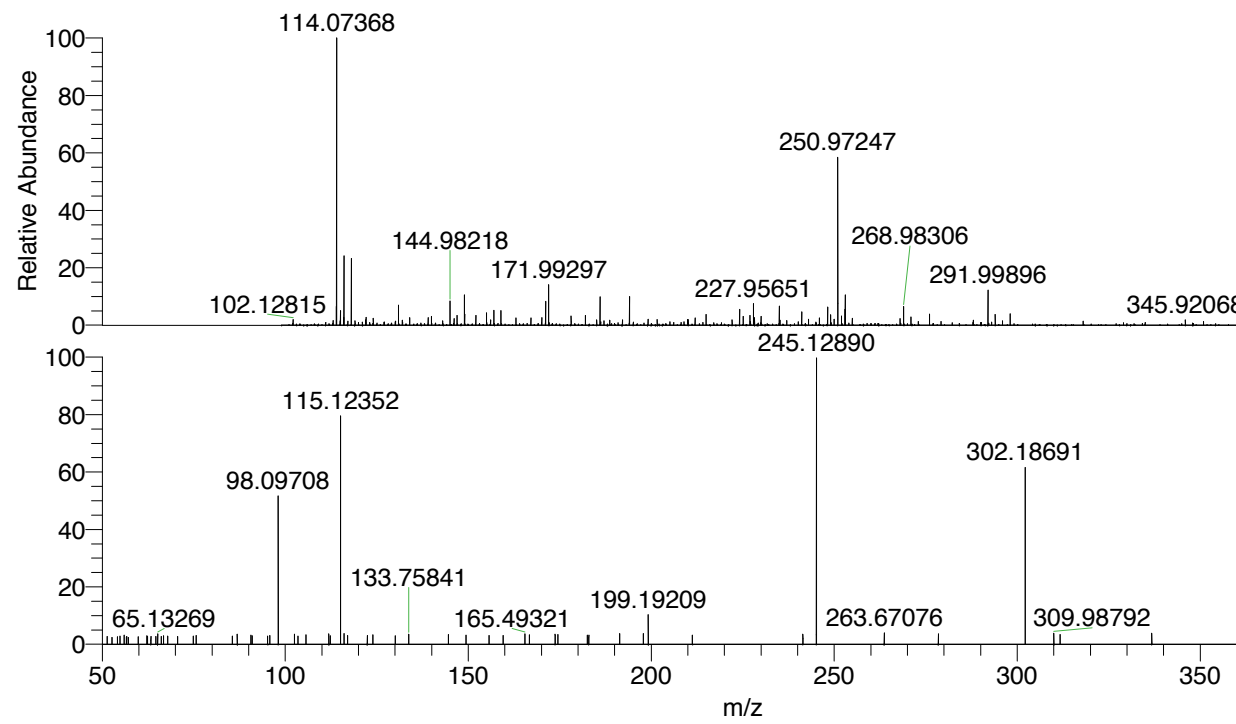
NL: 3.52E4
 Base Peak m/z= 50.00000-1500.00000 F:
 FTMS + p ESI d Full ms2
 376.27@hcd35.00 [50.00-400.00] MS
 Arobustus

Arobustus#2957-2981 RT: 7.40-7.46 AV:

F: FTMS + p ESI d Full ms2 376.27 ...

m/z= 50.00000-1000.00000

m/z	Intensity	Relative
51.32334	588.8	2.76
54.85248	623.9	2.92
55.95673	665.3	3.12
56.71881	586.3	2.75
62.17361	625.8	2.93
64.62983	593.9	2.78
65.13269	763.2	3.57
66.71366	634.9	2.97
67.87883	601.5	2.82
70.61800	595.3	2.79
74.84294	611.1	2.86
75.63964	677.6	3.17
85.58623	632.3	2.96
86.90431	738.1	3.46
90.59250	694.4	3.25
90.98894	638.2	2.99
95.21078	631.4	2.96
95.79875	670.1	3.14
98.09708	11084.6	51.90
102.51533	744.6	3.49
103.45234	602.6	2.82
105.65745	706.0	3.31
111.91567	775.0	3.63
112.30806	623.8	2.92
115.12352	16910.2	79.18
116.07083	807.9	3.78
117.05555	664.4	3.11
122.41706	664.9	3.11
123.94267	719.4	3.37
130.06648	635.0	2.97
133.75841	743.4	3.48
144.58847	720.9	3.38
149.38778	705.2	3.30
155.71878	663.3	3.11
159.51574	659.6	3.09
165.49321	801.5	3.75
166.73413	722.1	3.38
173.75047	738.9	3.46
174.50918	730.2	3.42
182.54520	679.7	3.18
182.93660	686.0	3.21
191.39591	786.8	3.68
197.86081	795.2	3.72
199.19209	2199.5	10.30
211.25734	690.0	3.23
241.43637	754.8	3.53
245.12890	21173.2	99.14
263.67076	839.5	3.93
278.44879	782.8	3.67
302.18691	13104.6	61.36
309.98792	828.8	3.88
311.71532	724.6	3.39
336.75455	816.6	3.82
376.27080	21356.9	100.00
387.59039	859.4	4.02



NL: 9.18E5
 Arobustus#2965 RT: 7.42
 AV: 1 T: FTMS + p ESI
 Full ms [100.00-1500.00]

NL: 2.12E4
 Arobustus#2928-3007
 RT: 7.40-7.46 AV: 5 F:
 FTMS + p ESI d Full ms2
 376.27@hcd35.00
 [50.00-400.00]

Arobustus#2957-2981 RT: 7.40-7.46 AV: 5

F: FTMS + p ESI d Full ms2 376.27@hcd35.00 [50.00-400.00]

m/z= 50.00000-1000.00000

m/z	Intensity	Relative
51.32334	588.8	2.76
52.65642	506.9	2.37
54.15959	560.2	2.62
54.85248	623.9	2.92
55.95673	665.3	3.12
56.60557	535.4	2.51
56.71881	586.3	2.75
57.15330	513.7	2.41
59.81261	560.2	2.62
62.17361	625.8	2.93
62.35082	569.2	2.67
63.29404	584.0	2.73
64.62983	593.9	2.78
65.13269	763.2	3.57
66.11301	579.1	2.71
66.71366	634.9	2.97
67.87883	601.5	2.82
67.91024	578.6	2.71
70.61800	595.3	2.79
74.84294	611.1	2.86
75.63964	677.6	3.17
85.58623	632.3	2.96
86.90431	738.1	3.46
90.59250	694.4	3.25
90.98894	638.2	2.99
95.21078	631.4	2.96
95.79875	670.1	3.14
98.09708	11084.6	51.90
102.51533	744.6	3.49
103.45234	602.6	2.82
105.65745	706.0	3.31
111.91567	775.0	3.63
112.30806	623.8	2.92
115.12352	16910.2	79.18
116.07083	807.9	3.78
117.05555	664.4	3.11
122.41706	664.9	3.11
123.94267	719.4	3.37
130.06648	635.0	2.97

Arobustus#2957-2981 RT: 7.40-7.46 AV: 5

F: FTMS + p ESI d Full ms2 376.27@hcd35.00 [50.00-400.00]

m/z= 50.00000-1000.00000

m/z	Intensity	Relative
133.75841	743.4	3.48
144.58847	720.9	3.38
149.38778	705.2	3.30
155.71878	663.3	3.11
159.51574	659.6	3.09
165.49321	801.5	3.75
166.73413	722.1	3.38
173.75047	738.9	3.46
174.50918	730.2	3.42
182.54520	679.7	3.18
182.93660	686.0	3.21
191.39591	786.8	3.68
197.86081	795.2	3.72
199.19209	2199.5	10.30
211.25734	690.0	3.23
241.43637	754.8	3.53
245.12890	21173.2	99.14
263.67076	839.5	3.93
278.44879	782.8	3.67
302.18691	13104.6	61.36
309.98792	828.8	3.88
311.71532	724.6	3.39
336.75455	816.6	3.82
376.27080	21356.9	100.00
387.59039	859.4	4.02