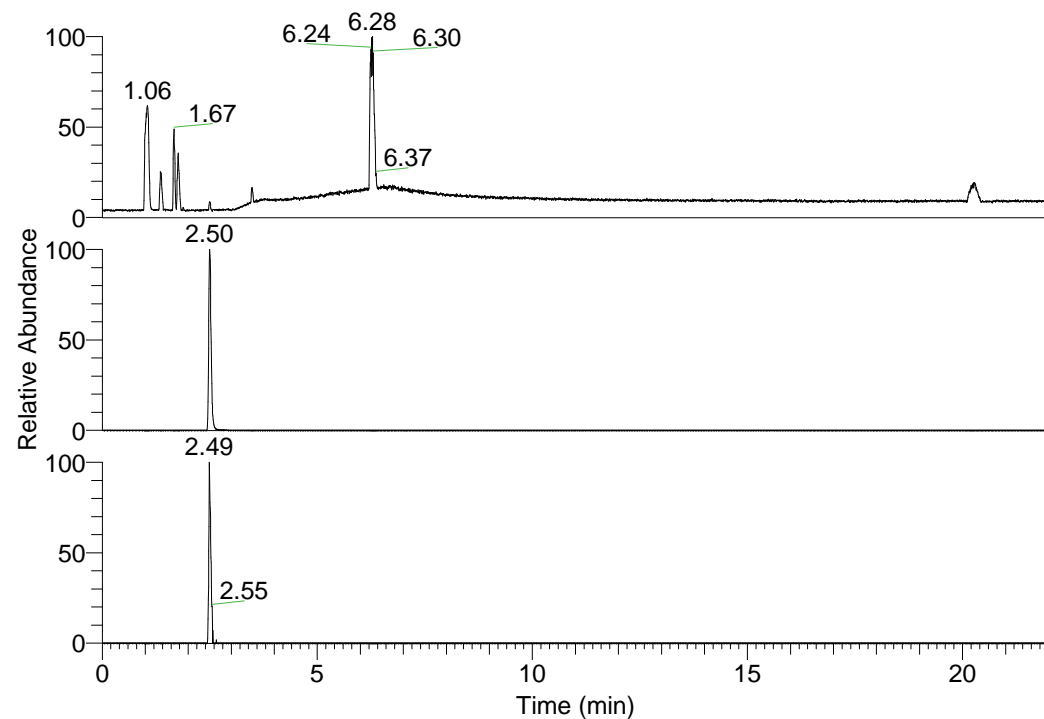


RT: 0.00 - 22.01



NL: 1.84E8
 Base Peak m/z=
 100.00000-1500.00000 F:
 FTMS + p ESI Full ms
 [100.00-1500.00] MS
 Arobustus_HDX

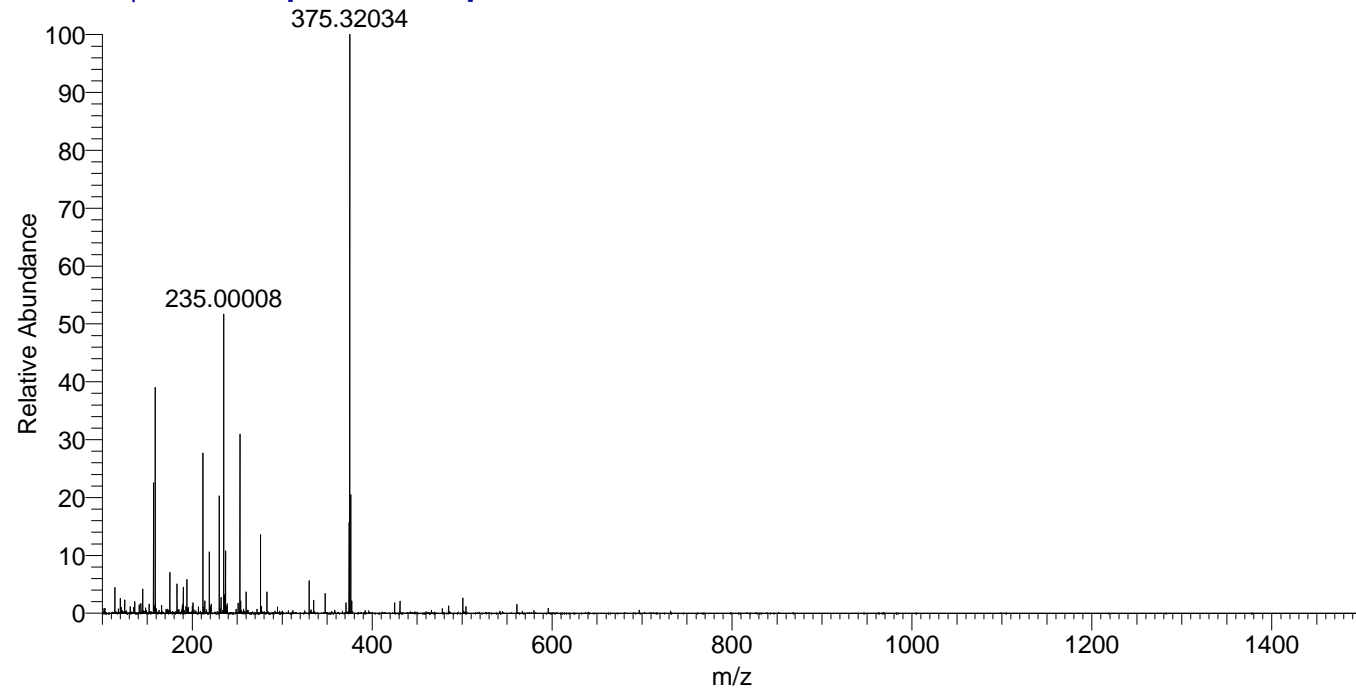
NL: 1.60E7
 Base Peak m/z=
 375.31925-375.32301 F:
 FTMS + p ESI Full ms
 [100.00-1500.00] MS
 Arobustus_HDX

NL: 1.32E5
 Base Peak m/z=
 188.66668-188.66856 F:
 FTMS + p ESI Full ms
 [100.00-1500.00] MS
 Arobustus_HDX

Arobustus_HDX#383 RT: 2.50
 T: FTMS + p ESI Full ms [100.00-1500.00]
 m/z= 375.00000-376.00000

m/z	Intensity	Relative	Delta (ppm)	Composition
375.32034	15475875.0	100.00	-0.64	C ₁₉ H ₂₇ ² H ₈ O ₃ N ₄
			3.49	C ₁₉ H ₂₅ ² H ₉ O ₃ N ₄
			-4.76	C ₁₉ H ₂₉ ² H ₇ O ₃ N ₄

Arobustus_HDX #383 RT: 2.50 AV: 1 NL: 1.47E7
 T: FTMS + p ESI Full ms [100.00-1500.00]



Arobustus_HDX #383 RT: 2.50 AV: 1 NL: 1.47E7
 T: FTMS + p ESI Full ms [100.00-1500.00]

