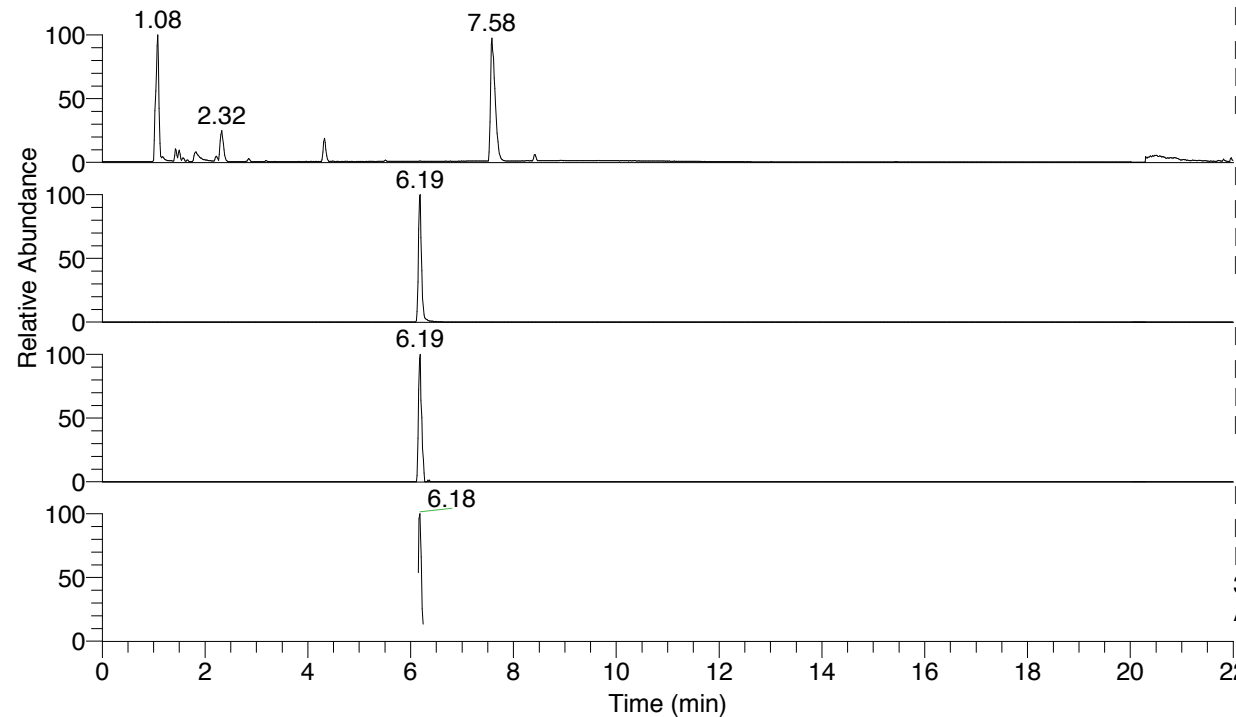


RT: 0.00 - 22.01



NL: 8.28E7  
 Base Peak m/z= 100.00000-1500.00000 F:  
 FTMS + p ESI Full ms [100.00-1500.00]  
 MS Arobustus

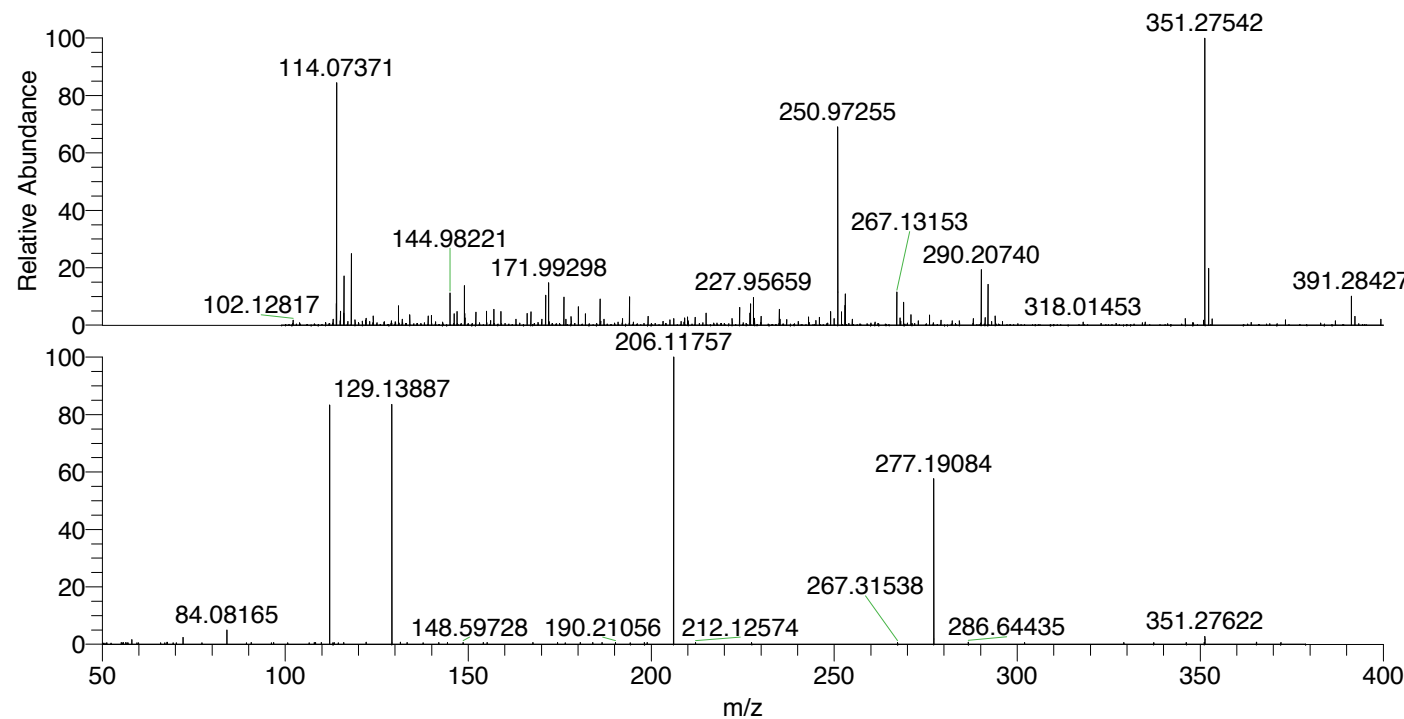
NL: 8.63E5  
 Base Peak m/z= 351.27424-351.27776 F:  
 FTMS + p ESI Full ms [100.00-1500.00]  
 MS Arobustus

NL: 8.47E4  
 Base Peak m/z= 176.14103-176.14279 F:  
 FTMS + p ESI Full ms [100.00-1500.00]  
 MS Arobustus

NL: 1.42E5  
 Base Peak m/z= 50.00000-1500.00000 F:  
 FTMS + p ESI d Full ms2  
 351.28@hcd35.00 [50.00-375.00] MS  
 Arobustus

Arobustus#2458-2495 RT: 6.15-6.24 AV:  
 F: FTMS + p ESI d Full ms2 351.28 ...  
 m/z= 50.00000-1000.00000

m/z	Intensity	Relative
55.20946	475.7	0.57
55.68260	446.0	0.54
55.85447	448.7	0.54
56.43164	476.7	0.57
58.06589	1362.9	1.64
59.48621	457.3	0.55
65.99127	456.5	0.55
67.67717	564.0	0.68
67.82901	510.2	0.61
69.39568	444.9	0.53
72.08167	1980.7	2.38
84.08165	4151.6	4.98
90.72040	516.2	0.62
96.81167	482.9	0.58
106.55706	465.1	0.56
107.97741	560.5	0.67
108.32472	474.8	0.57
109.90004	502.1	0.60
112.11244	68993.6	82.84
113.02633	457.5	0.55
113.38999	466.8	0.56
114.48224	455.8	0.55
116.01760	466.9	0.56
122.09959	581.2	0.70
129.13887	69817.4	83.83
131.50007	577.0	0.69
133.33064	483.6	0.58
141.94164	483.7	0.58
144.33659	480.1	0.58
148.59728	522.1	0.63
154.12752	480.3	0.58
155.19278	509.6	0.61
167.70238	528.1	0.63
174.39818	492.1	0.59
180.61361	481.0	0.58
184.02626	503.0	0.60
186.53969	495.4	0.59
190.21056	552.4	0.66
194.29265	473.3	0.57
198.14430	529.8	0.64
198.88700	533.1	0.64
206.11757	83287.4	100.00
212.12574	555.3	0.67
227.43564	515.1	0.62
267.31538	550.7	0.66
277.19084	48042.2	57.68
286.64435	575.9	0.69
301.99784	535.1	0.64
329.12318	524.3	0.63
337.29418	459.8	0.55
346.18129	489.5	0.59
351.10881	512.9	0.62
351.27622	2317.3	2.78
365.36839	596.2	0.72
372.04069	545.4	0.65



NL: 8.63E5  
 Arobustus#2473 RT: 6.19  
 AV: 1 T: FTMS + p ESI  
 Full ms [100.00-1500.00]

NL: 8.28E4  
 Arobustus#2431-2521  
 RT: 6.15-6.24 AV: 7 F:  
 FTMS + p ESI d Full ms2  
 351.28@hcd35.00  
 [50.00-375.00]

Arobustus#2458-2495 RT: 6.15-6.24 AV: 7

F: FTMS + p ESI d Full ms2 351.28@hcd35.00 [50.00-375.00]

m/z= 50.00000-1000.00000

m/z	Intensity	Relative
55.20946	475.7	0.57
55.68260	446.0	0.54
55.85447	448.7	0.54
56.43164	476.7	0.57
57.02482	425.0	0.51
58.06589	1362.9	1.64
59.48621	457.3	0.55
65.99127	456.5	0.55
67.67717	564.0	0.68
67.82901	510.2	0.61
69.39568	444.9	0.53
70.28306	424.7	0.51
72.08167	1980.7	2.38
77.26759	426.9	0.51
84.08165	4151.6	4.98
89.36256	437.1	0.52
90.72040	516.2	0.62
96.19391	438.3	0.53
96.81167	482.9	0.58
100.70557	419.5	0.50
106.55706	465.1	0.56
107.97741	560.5	0.67
108.32472	474.8	0.57
109.90004	502.1	0.60
112.11244	68993.6	82.84
113.02633	457.5	0.55
113.38999	466.8	0.56
114.48224	455.8	0.55
116.01760	466.9	0.56
122.09959	581.2	0.70
129.13887	69817.4	83.83
131.50007	577.0	0.69
133.33064	483.6	0.58
137.70792	440.8	0.53
141.94164	483.7	0.58
141.95647	441.1	0.53
144.33659	480.1	0.58
148.59728	522.1	0.63
154.12752	480.3	0.58

Arobustus#2458-2495 RT: 6.15-6.24 AV: 7

F: FTMS + p ESI d Full ms2 351.28@hcd35.00 [50.00-375.00]

m/z= 50.00000-1000.00000

m/z	Intensity	Relative
155.19278	509.6	0.61
167.70238	528.1	0.63
174.39818	492.1	0.59
176.49473	440.2	0.53
180.61361	481.0	0.58
184.02626	503.0	0.60
186.53969	495.4	0.59
190.21056	552.4	0.66
194.29265	473.3	0.57
198.14430	529.8	0.64
198.88700	533.1	0.64
206.11757	83287.4	100.00
212.12574	555.3	0.67
227.43564	515.1	0.62
267.31538	550.7	0.66
277.19084	48042.2	57.68
286.64435	575.9	0.69
301.99784	535.1	0.64
329.12318	524.3	0.63
337.29418	459.8	0.55
346.18129	489.5	0.59
351.10881	512.9	0.62
351.27622	2317.3	2.78
365.36839	596.2	0.72
372.04069	545.4	0.65